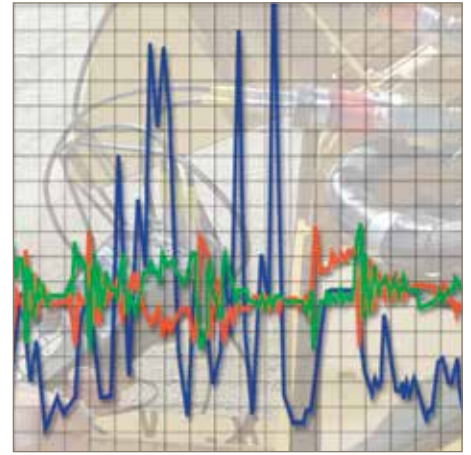


The Parker Serviceman Plus

Diagnostic Meter



Ideal for Maintenance and Diagnostics:

The new Serviceman Plus is an extremely robust, portable and easy-to-use measuring device. With a scan rate of 1 ms and the ability to read pressure, flow, temperature and RPM, it is versatile for use with mobile and industrial systems.

Data can be conveniently saved to a removable nano USB stick or transferred through USB interface to a PC for further analysis with SensoWin software.

The Serviceman Plus is available in two designs. One with two inputs for analog sensors and the other with CAN interface for up to three CAN sensors.



Contact Information:

Parker Hannifin Corporation
Quick Coupling Division
8145 Lewis Road
Minneapolis, MN 55427

phone 763 544 7781
fax 763 544 3418
qcd_sales@parker.com

www.parker.com/quickcouplings

Serviceman Plus Features:

- “Plug and play” automatic sensor recognition
- Large back-lit display MIN/MAX memory and differential measurements
- Increased memory capacity with nano USB stick
- USB interface to PC for convenient analysis and documentation via SensoWin software
- Robust design with IP67 rated protection for extreme conditions
- Rear panel integrated support for free-standing operation
- Scan rate: 1 ms



ENGINEERING YOUR SUCCESS.

The Parker Serviceman Plus Diagnostic Instrument

Technical Data - Serviceman Plus

Interfaces

- USB device: Online data transfer between device and PC via SensoWin software; measured value transfer: ACT/MIN/MAX, min. 5 mns; USB standard: 2.0, full speed; connection assembly: Micro USB socket, protected, type B
- USB host: Connection of USB memory stick, max. 4 GB; recommended types: Delock USB 2.0 nano memory stick, Intenso Micro Line; USB standard: 2.0, full speed, max. 100 mA; connection assembly: Micro USB socket, protected, type B

Memory

- Internal measure value memory: 1 measurement, approx. 15,000 data records (270,000 measure values ACT/MIN/MAX)
- USB memory stick: 1 GB supplied

Functions

- Difference; addition; output; ACT; MIN; MAX; FS; TEMP display; battery charge; start-stop measurement

Display

- Type: FSTN-LCD, graphical with LED background lighting
- Visible area: 62 mm x 62 mm
- Resolution: 130 x 130 pixels

Voltage (external)

- Micro-USB socket, type B, + 5 V DC, max. 1000 MA

Battery

Analog version:

- Type: Lithium-ion pack; 3.7 V DC/2250 mAh
- Battery charging time with power supply: Approx. 3.5 hours
- Battery discharge period: > 8 hours, with 2 sensors

CAN version:

- Type: Lithium-ion pack; 3.7 V DC/4550 mAh
- Battery charging time with power supply: Approx. 7 hours
- Battery discharge period: > 8 hours, with 2 CAN-BUS sensors

Casing

- Material of casing: PC/ABS
- Material of casing protective cover: TPU
- Dimensions (W x H x D): 96 x 172 x 54 mm
- Weight: approx. 540g

Operating Environment

- Operating temperature: 0-50°C
- Storage temperature: -25-60°C
- Relative humidity: <80%
- Environmental assessment: DIN EN 60068-2-32 (1 m free fall)
- Protection category (EN60529): Analog IP54, CAN IP67

PC Software

- Read measurement data, show, analyse on PC; read device settings, edit; load device setting from library to manual measuring device

Accessories that can be used with the Parker Serviceman Plus



Tachometer SCRPM
Precision measurement of rotational speed up to 10,000 RP



Temperature Sensor
Precise Measurement of oil temperatures up to 105°C
Screw-in or manual sensor

SCM-155-2-05 CAN Version

CAN Inputs:

- CAN-BUS sensor auto recognition
- Plug connection: 5-pol, M12 x 1, SPEEDCON plug
- Sampling rate P-channel: 1 ms



- Single port accepts input from up to three CAN sensors in a bus line
- High resistance to interference
- Compatible with all SensoControl CAN type sensors and accessories



SCM-155-0-02 Analog Version

Analog Inputs:

- Analog sensor auto recognition
- Measurement Precision: +/- 0.02% +/- one digit
- Plug Connection: 5-pol, push-pull
- Sampling rate P-channel: 1 ms



- Two analog input ports
- Compatible with all SensoControl analog type sensors and accessories



Frequency Adapter

Converts the signal of a connected sensor into an analog and a CAN frequency. Measurement parameters of the converter can be set via PC with the configuration software

Part Number
SCMA-FCU-600



Voltage Adapter

For use with Auxiliary Sensors
Input: 0-4 A, 0 - 48 VDC
Accuracy: 0.25% FS

Part Number
SCMA-VADC-600

Serviceman Plus Test Kits

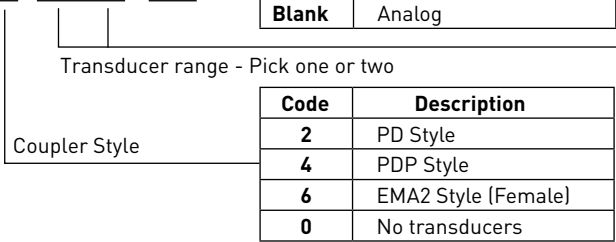


PDS4 (CAN version) Kit Contents:	Part Number
Serviceman Plus	SCM-155-2-05
CD with SensoWin, documentation and instructions	CD 4078
Case	SCC-210
CAN Transducers (1 or 2)	PD XXXXX-XXXX
CAN Transducer Connection Cable (1 or 2 based on transducer #)	SCK-401-05-4F-4M
Power Supply	SCSN-440
CAN Y cable (only included with 2 transducer kit)	SCK-401-0.3-Y
Terminator Resistor	SCK-401-R
Nano USB Stick - 1 GB	SCK-USB-MINISTICK
USB Connection Cable - 1 meter	SCK-315-02-36

PDS4 (Analog version) Kit Contents:	Part Number
Serviceman Plus	SCM-155-0-02
CD with SensoWin, documentation and instructions	CD 4078
Case	SCC-210
Analog Transducers (1 or 2)	PD XXXXX-XXXX
Analog Transducer Connection Cable (1 or 2 based on transducer #)	SCK-102-03-02
Power Supply	SCSN-440
Nano USB Stick - 1 GB	SCK-USB-MINISTICK
USB Connection Cable - 1 meter	SCK-315-02-36

Code for Ordering Kits:

PDS4 - X - XX - XX - XXX



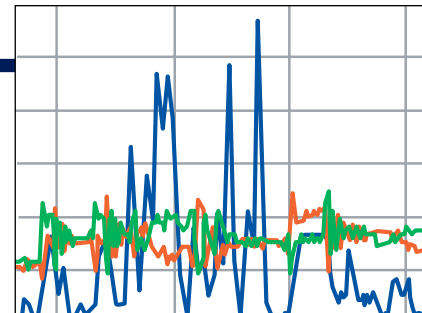
Code	Pressure (psi)	Color
01	-14.5 - 220	Blue
06	0 - 870	Green
15	0 - 2175	Yellow
40	0 - 5800	Orange
60	0 - 8700	Red
00	No transducers	



5 pin to 5 pin Cables
 Flow sensor, transducer and temperature probe cables.
 Length Part Number
 10 ft (3 m) SCK-102-03-02
 Extension Cable
 16.4 ft (5 m) SCK-102-05-12



Adapters
 See Catalog 3800 for available adapters.



SensoWIN™ Software
 Transfer data from the Serviceman Plus to your PC. Display up to 16 curves simultaneously. Zoom and cursor functions. Calculation functions. Software can be downloaded from parker.com

Pressure Transducers - Analog and CAN versions



	PD**-0100	PD**-0600	PD**-1500	PD**-4000	PD**-6000
Color Code	Blue	Green	Yellow	Orange	Red
Measuring Range (Pressure)	-14.5 to 220 psi	0 to 870 psi	0 to 2175 psi	0 to 5800 psi	0 to 8700 ⁽¹⁾ psi
Measuring Range (Temp)	-13°F to 221°F	-13°F to 221°F	-13°F to 221°F	-13°F to 221°F	-13°F to 221°F

Pressure Transducers:

Code for Ordering:

PD XXXXX - XXXX - XXX

Pressure Range

Coupler Style

Code	Description
CAN	CAN bus technology
Blank	Analog

Code	Description
TA	PD Style
PTA	PDP Style
TEMA3	EMA3 Style (Female)

Code	Pressure (psi)	Color
0100	-14.5 - 220	Blue
0600	0 - 870	Green
1500	0 - 2175	Yellow
4000	0 - 5800	Orange
6000	0 - 8700	Red

Flow Sensors - Analog and CAN Versions



Flow Sensors:

Code for Ordering:

SCFT- XXXX - XXX - XXX

Coupler Style

Flow Range

Code	Description
CAN	CAN bus technology
Blank	Analog

Code	Description
PD	PD Style
EMA	EMA3 Style

Code	Low Rate (gpm)
0004	0.25 - 4 (1 - 15 l/min)
0116	1 - 16 (4 - 60 l/min)
0380	3 - 80 (10 - 300 l/min)
5160	5 - 160 (20 - 600 l/min)

Additional Accessories	
Vehicle Charging Adapter with USB connection 12/24 VAC, 1 A	SCNA-USB-CAR
USB Connection Cable 2 m (for charging and connecting to PC)	SCK-315-02-36

