

PVC Plastic Fittings

PVC and CPVC
Schedule 80



Corrosion Resistant Thermoplastic Fittings:

Parker Hannifin, Veriflo Division, Partek Operation has a complete line of thermoplastic fittings which provide superior chemical resistance. Since they are made from a variety of engineering plastics, corrosion becomes a thing of the past when using the appropriate products.

Parker's PVC and CPVC plastic fittings are used in many applications where acids and corrosive chemicals are used in place of stainless systems when a greater corrosion resistance is desired. They are used in a variety of applications such as chemical production, water, industrial water treatment, plating & metal treatment, pulp & paper, refinishing and power plants.



Contact Information:

Parker Hannifin Corporation
Veriflo Division
Partek Operation
7075 East Southpoint Road
Tucson, Arizona 85706

phone 520 574 2600
fax 520 574 2700

www.parker.com/partek

Product Features:

- Good acid and alkali resistance
- Good electrical resistance
- High strength
- Low friction loss
- Easy installation
- Low thermal conductivity
- Cost effective
- Light weight
- Maintenance free
- Long life



ENGINEERING YOUR SUCCESS.

PVC Plastic Fittings - Schedule 80

S = Slip Connection
 F = Female Pipe Threads
 M = Male Pipe Threads
 B = Blind Flange

90° Elbow

(S*S)



Part Number	Size (In.)	Carton (Qty)
701208	1/2"	25
701212	3/4"	25
701216	1"	25
701224	1 1/2"	10
701232	2"	10

Tee

(S*S*S)



Part Number	Size (In.)	Carton (Qty)
901208	1/2"	25
901212	3/4"	25
901216	1"	25
901224	1 1/2"	10
901232	2"	10

(S*F)



Part Number	Size (In.)	Carton (Qty)
702208	1/2"	25
702212	3/4"	25
702216	1"	25
702224	1 1/2"	10
702232	2"	10

(S*S*F)



Part Number	Size (In.)	Carton (Qty)
902208	1/2"	25
902212	3/4"	25
902216	1"	25

(F*F)



Part Number	Size (In.)	Carton (Qty)
707208	1/2"	25
707212	3/4"	25
707216	1"	25
707224	1 1/2"	10
707232	2"	10

(F*F*F)



Part Number	Size (In.)	Carton (Qty)
904208	1/2"	25
904212	3/4"	25
904216	1"	25
904224	1 1/2"	10
904232	2"	10

45° Elbow

(S*S)



Part Number	Size (In.)	Carton (Qty)
711208	1/2"	25
711212	3/4"	25
711216	1"	25
711224	1 1/2"	10
711232	2"	10

Reducing Tee

(S*S*S)



Part Number	Size (In.)	Carton (Qty)
9012121208	3/4" x 3/4" x 1/2"	25
9012161608	1" x 1" x 1/2"	25
9012161612	1" x 1" x 3/4"	25
90123224	2" x 1 1/2"	10

(F*F)



Part Number	Size (In.)	Carton (Qty)
712208	1/2"	25
712212	3/4"	25
712216	1"	25
712224	1 1/2"	10
712232	2"	10

**** Do not recommend to service or test with compressed air ****

PVC Plastic Fittings - Schedule 80

Coupling

(S*S)



Part Number	Size (In.)	Carton (Qty)
801208	1/2"	25
801212	3/4"	25
801216	1"	25
801224	1 1/2"	10
801232	2"	10

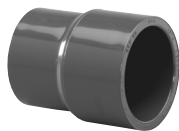
(F*F)



Part Number	Size (In.)	Carton (Qty)
804208	1/2"	25
804212	3/4"	25
804216	1"	25
804224	1 1/2"	10
804232	2"	10

Reducer Coupling

(S*S)



Part Number	Size (In.)	Carton (Qty)
80321208	3/4" x 1/2"	25
80321608	1" x 1/2"	25
80321612	1" x 3/4"	10
80323224	2" x 1 1/2"	10

Female Adapter

(S*F)



Part Number	Size (In.)	Carton (Qty)
602208	1/2"	25
602212	3/4"	25
602216	1"	25
602224	1 1/2"	10
602232	2"	10

Male Adapter

(M*S)



Part Number	Size (In.)	Carton (Qty)
603208	1/2"	25
603212	3/4"	25
603216	1"	25
603224	1 1/2"	10
603232	2"	10

Reducer Bushing (flush style)

(S*S)



Part Number	Size (In.)	Carton (Qty)
50121208	3/4" x 1/2"	25
50121608	1" x 1/2"	25
50121612	1" x 3/4"	25
50122408	1 1/2" x 1/2"	10
50122412	1 1/2" x 3/4"	10
50122416	1 1/2" x 1"	10
50123208	2" x 1/2"	10
50123212	2" x 3/4"	10
50123216	2" x 1"	10
50123224	2" x 1 1/2"	10

(S*F)



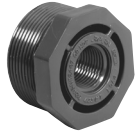
Part Number	Size (In.)	Carton (Qty)
50221208	3/4" x 1/2"	25
50221608	1" x 1/2"	25
50221612	1" x 3/4"	25
50222408	1 1/2" x 1/2"	10
50222412	1 1/2" x 3/4"	10
50222416	1 1/2" x 1"	10
50223208	2" x 1/2"	10
50223212	2" x 3/4"	10
50223216	2" x 1"	10
50223224	2" x 1 1/2"	10

**** Do not recommend to service or test with compressed air ****

PVC Plastic Fittings - Schedule 80

Reducer Bushing (flush style)

(M*F)



Part Number	Size (In.)	Carton (Qty)
50321208	¾" x ½"	25
50321608	1" x ½"	25
50321612	1" x ¾"	25
50322412	1½" x ¾"	10
50322416	1½" x 1"	10
50323216	2" x 1"	10
50323224	2" x 1½"	10

Flange

(B)



Part Number	Size (In.)	Carton (Qty)
103208	½"	25
103212	¾"	25
103216	1"	25
103224	1½"	10
103232	2"	10

Cap

(S)



Part Number	Size (In.)	Carton (Qty)
401208	½"	25
401212	¾"	25
401216	1"	25
401224	1½"	10
401232	2"	10

Flange (solid style)

(S)



Part Number	Size (In.)	Carton (Qty)
101208	½"	25
101212	¾"	25
101216	1"	25
101224	1½"	10
101232	2"	10

(F)



Part Number	Size (In.)	Carton (Qty)
402208	½"	25
402212	¾"	25
402216	1"	25
402224	1½"	10
402232	2"	10

(F)



Part Number	Size (In.)	Carton (Qty)
102208	½"	25
102212	¾"	25
102216	1"	25
102224	1½"	10
102232	2"	10

Plug

(M)



Part Number	Size (In.)	Carton (Qty)
404208	½"	25
404212	¾"	25
404216	1"	25
404224	1½"	10
404232	2"	10

**** Do not recommend to service or test with compressed air ****

PVC Plastic Fittings - Schedule 80

Flange (loose ring)

(S)



Part Number	Size (In.)	Carton (Qty)
104208	1/2"	25
104212	3/4"	25
104216	1"	25
104224	1 1/2"	10
104232	2"	10

(Spigot)



Part Number	Size (In.)	Carton (Qty)
105208	1/2"	25
105212	3/4"	25
105216	1"	25
105224	1 1/2"	10
105232	2"	10

Union (O-Ring type)

(S*S)



Part Number	Size (In.)	Carton (Qty)
301208	1/2"	10
301212	3/4"	10
301216	1"	10
301224	1 1/2"	5
301232	2"	5

(F*F)



Part Number	Size (In.)	Carton (Qty)
302208	1/2"	10
302212	3/4"	10
102216	1"	10
302224	1 1/2"	5
302232	2"	5

**** Do not recommend to service or test with compressed air ****

CPVC Plastic Fittings - Schedule 80

Tee

(S*S*S)



Part Number	Size (In.)	Carton (Qty)
901308	1/2"	25
901312	3/4"	25
901316	1"	25
901324	1 1/2"	10
901332	2"	10

(S*S*F)



Part Number	Size (In.)	Carton (Qty)
902308	1/2"	25
902312	3/4"	25
902316	1"	25

(F*F*F)



Part Number	Size (In.)	Carton (Qty)
904308	1/2"	25
904312	3/4"	25
904316	1"	25
904324	1 1/2"	10
904332	2"	10

90° Elbow

(S*S)



Part Number	Size (In.)	Carton (Qty)
701308	1/2"	25
701312	3/4"	25
701316	1"	25
701324	1 1/2"	10
701332	2"	10

(S*F)



Part Number	Size (In.)	Carton (Qty)
702308	1/2"	25
702312	3/4"	25
702316	1"	25
702324	1 1/2"	10
702332	2"	10

(F*F)



Part Number	Size (In.)	Carton (Qty)
707308	1/2"	25
707312	3/4"	25
707316	1"	25
707324	1 1/2"	10
707332	2"	10

Reducing Tee

(S*S*S)



Part Number	Size (In.)	Carton (Qty)
9013121208	3/4" x 3/4" x 1/2"	25
9013161608	1" x 1" x 1/2"	25
9013161612	1" x 1" x 3/4"	25
9013323224	2" x 1 1/2"	10

45° Elbow

(S*S)



Part Number	Size (In.)	Carton (Qty)
711398	1/2"	25
711312	3/4"	25
711316	1"	25
711324	1 1/2"	10
711332	2"	10

(F*F)



Part Number	Size (In.)	Carton (Qty)
712308	1/2"	25
712312	3/4"	25
712316	1"	25
712324	1 1/2"	10
712332	2"	10

**** Do not recommend to service or test with compressed air ****

CPVC Plastic Fittings - Schedule 80

Coupling

(S*S)



Part Number	Size (In.)	Carton (Qty)
801308	1/2"	25
801312	3/4"	25
801316	1"	25
801324	1 1/2"	10
801332	2"	10

(F*F)



Part Number	Size (In.)	Carton (Qty)
804308	1/2"	25
804312	3/4"	25
804316	1"	25
804324	1 1/2"	10
804332	2"	10

Reducer Coupling

(S*S)



Part Number	Size (In.)	Carton (Qty)
80331208	3/4" x 1/2"	25
80331608	1" x 1/2"	25
80331612	1" x 3/4"	10
80333224	2" x 1 1/2"	10

Female Adapter

(S*F)



Part Number	Size (In.)	Carton (Qty)
602308	1/2"	25
602312	3/4"	25
602316	1"	25
602324	1 1/2"	10
602332	2"	10

Male Adapter

(M*S)



Part Number	Size (In.)	Carton (Qty)
603308	1/2"	25
603312	3/4"	25
603316	1"	25
603324	1 1/2"	10
603332	2"	10

Reducer Bushing (flush style)

(S*S)



Part Number	Size (In.)	Carton (Qty)
50131208	3/4" x 1/2"	25
50131608	1" x 1/2"	25
50131612	1" x 3/4"	25
50132408	1 1/2" x 1/2"	10
50132412	1 1/2" x 3/4"	10
50132416	1 1/2" x 1"	10
50133208	2" x 1/2"	10
50133212	2" x 3/4"	10
50133216	2" x 1"	10
50133224	2" x 1 1/2"	10

(S*F)



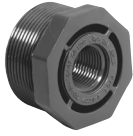
Part Number	Size (In.)	Carton (Qty)
50231208	3/4" x 1/2"	25
50231608	1" x 1/2"	25
50231612	1" x 3/4"	25
50232408	1 1/2" x 1/2"	10
50232412	1 1/2" x 3/4"	10
50232416	1 1/2" x 1"	10
50233208	2" x 1/2"	10
50233212	2" x 3/4"	10
50233216	2" x 1"	10
50233224	2" x 1 1/2"	10

**** Do not recommend to service or test with compressed air ****

CPVC Plastic Fittings - Schedule 80

Reducer Bushing (flush style)

(M*F)



Part Number	Size (In.)	Carton (Qty)
50331208	¾" x ½"	25
50331608	1" x ½"	25
50331612	1" x ¾"	25
50332412	1½" x ¾"	10
50332416	1½" x 1"	10
50333216	2" x 1"	10
50333224	2" x 1½"	10

Flange

(B)



Part Number	Size (In.)	Carton (Qty)
103324	1½"	10
103332	2"	10

Cap

(S)



Part Number	Size (In.)	Carton (Qty)
401308	½"	25
401312	¾"	25
401316	1"	25
401324	1½"	10
401332	2"	10

(S)



Part Number	Size (In.)	Carton (Qty)
101308	½"	25
101312	¾"	25
101316	1"	25
101324	1½"	10
101232	2"	10

(F)



Part Number	Size (In.)	Carton (Qty)
402308	½"	25
402312	¾"	25
402316	1"	25
402324	1½"	10
402332	2"	10

(F)



Part Number	Size (In.)	Carton (Qty)
102308	½"	25
102312	¾"	25
102316	1"	25
102324	1½"	10
102332	2"	10

Plug

(M)



Part Number	Size (In.)	Carton (Qty)
404308	½"	25
404312	¾"	25
404316	1"	25
404324	1½"	10
404332	2"	10

**** Do not recommend to service or test with compressed air ****

CPVC Plastic Fittings - Schedule 80

Flange (loose ring)

(S)



Part Number	Size (In.)	Carton (Qty)
104308	½"	25
104312	¾"	25
104316	1"	25
104324	1½"	10
104332	2"	10

(Spigot)



Part Number	Size (In.)	Carton (Qty)
105316	1"	25
105324	1½"	10
105332	2"	10

Union (O-Ring type)

(S*S)



Part Number	Size (In.)	Carton (Qty)
301308	½"	10
301312	¾"	10
301316	1"	10
301324	1½"	5
301332	2"	5

(F*F)



Part Number	Size (In.)	Carton (Qty)
302308	½"	10
302312	¾"	10
102316	1"	10
302324	1½"	5
302332	2"	5

**** Do not recommend to service or test with compressed air ****

OFFER OF SALE:

The items described in this document are hereby offered for sale by Parker-Hannifin Corporation, its subsidiaries or its authorized distributors. This offer and its acceptance are governed by the provisions stated in the detailed "Offer of Sale" elsewhere in this document or available at www.parker.com/partek

WARNING USER RESPONSIBILITY

FAILURE OR IMPROPER SELECTION OR IMPROPER USE OF THE PRODUCTS DESCRIBED HEREIN OR RELATED ITEMS CAN CAUSE DEATH, PERSONAL INJURY AND PROPERTY DAMAGE. THIS DOCUMENT IS FOR REFERENCE ONLY. PLEASE CONSULT FACTORY FOR LATEST PRODUCT DRAWINGS AND SPECIFICATIONS

This document and other information from Parker-Hannifin Corporation, its subsidiaries and authorized distributors provide product or system options for further investigation by users having technical expertise.

The user, through its own analysis and testing, is solely responsible for making the final selection of the system and components and assuring that all performance, endurance, maintenance, safety and warning requirements of the application are met. The user must analyze all aspects of the application, follow applicable industry standards, and follow the information concerning the product in the current product catalog and in any other materials provided from Parker or its subsidiaries or authorized distributors.

To the extent that Parker or its subsidiaries or authorized distributors provide component or system options based upon data or specifications provided by the user, the user is responsible for determining that such data and specifications are suitable and sufficient for all applications and reasonably foreseeable uses of the components or systems.



ENGINEERING YOUR SUCCESS.