

Technical Data Sheet & Installation Instructions for End Seal Boot (ESB) Kit

Bulletin ESB-II

Contact Information:

Parker Hannifin Corporation
Parflex Division
1300 N. Freedom St.
Ravenna, OH 44266 USA

phone 330 296 2871
fax 330 296 0675
www.parker.com/pfd

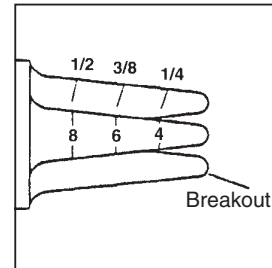
End Seal Boot (ESB) Kit

Scope

Parker end seal boot (ESB) kits are designed to prevent moisture from entering the ends of Parker Temprace bundles. Each boot allows up to three tube breakouts. These breakouts have marks to specify where to cut for either a 1/4", 3/8" and 1/2" tube.

Bill of Materials

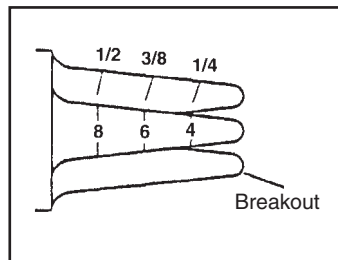
- (2) End Seal Boots
- (6) Stainless Steel Hose Clamps
- (2) Plastic Hose Clamps (1.47" - 1.72")
- (2) Plastic Hose Clamps (1.73"-2.02")
- (2) Mastic Sealant (3/4" wide x 9" long)



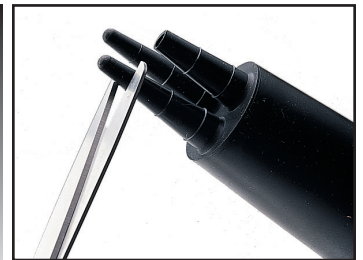
Installation Instructions for Steam and Electric Temprace Bundles

NOTE:

Each kit contains sufficient materials to seal two bundle ends. Each boot allows for up to three tube breakouts. Each breakout has marks to specify where to cut for either 1/4", 3/8" and 1/2" tubes.



1



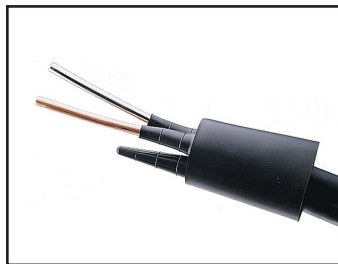
Cut and remove ends of tube breakouts corresponding to the quantity and size of tubes in the bundle.

2



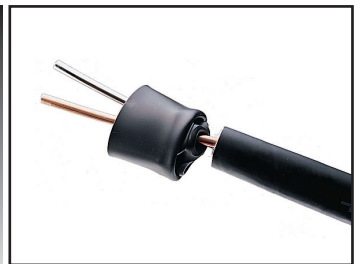
Apply silicone spray or other type of compatible lubricant to tubing to help slide on end boot.

3



Pull end boot down over bundle to create a snug fit.

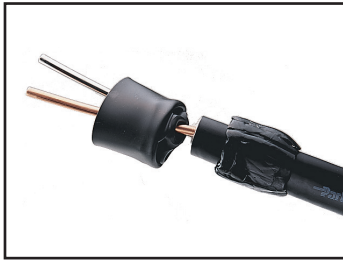
4



Roll back end boot to expose end of tube bundle.

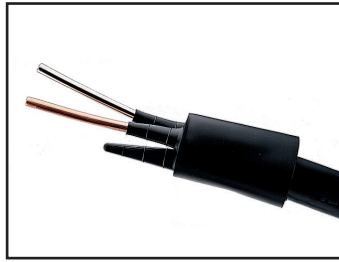
Technical Data Sheet & Installation Instructions for End Seal Boot (ESB) Kit

5



Remove protective backing from mastic sealant and apply the whole length approximately 1" to 1-1/2" from end of bundle to be sealed. Overlap excess sealant after one revolution.

6

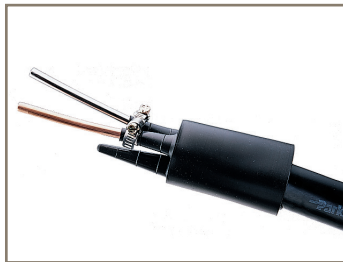


Unroll boot back down over the tube bundle covering sealant.

CAUTION:

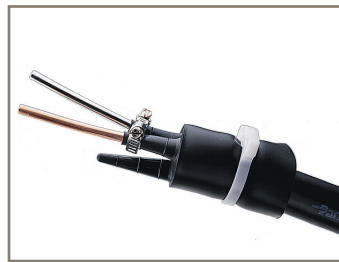
Do not overtighten stainless steel clamps or they will tear through rubber boot.

7



Using the stainless steel clamps, clamp remaining part of breakouts to the tubes.

8

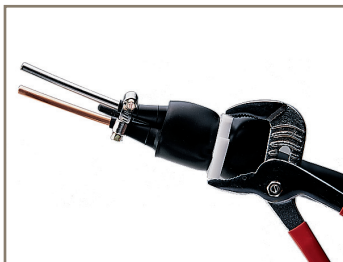


Place plastic hose clamp over area where mastic sealant was applied.

NOTE:

Make sure plastic hose clamp is fully tightened. Use channel lock pliers or some other appropriate tool if necessary.

9



Be sure clamp joins in a spot where mastic sealant is overlapped and tighten clamp.

⚠ WARNING – USER RESPONSIBILITY

FAILURE OR IMPROPER SELECTION OR IMPROPER USE OF THE PRODUCTS DESCRIBED HEREIN OR RELATED ITEMS CAN CAUSE DEATH, PERSONAL INJURY AND PROPERTY DAMAGE.

This document and other information from Parker-Hannifin Corporation, its subsidiaries and authorized distributors provide product or system options for further investigation by users having technical expertise.

The user, through its own analysis and testing, is solely responsible for making the final selection of the system and components and assuring that all performance, endurance, maintenance, safety and warning requirements of the application are met. The user must analyze all aspects of the application, follow applicable industry standards, and follow the information concerning the product in the current product catalog and in any other materials provided from Parker or its subsidiaries or authorized distributors.

To the extent that Parker or its subsidiaries or authorized distributors provide component or system options based upon data or specifications provided by the user, the user is responsible for determining that such data and specifications are suitable and sufficient for all applications and reasonably foreseeable uses of the components or systems.

View Parker Safety Guide No. 4400-B.1 at www.parker.com/safety

Offer of Sale

The items described in this document are hereby offered for sale by Parker-Hannifin Corporation, its subsidiaries or its authorized distributors. This offer and its acceptance are governed by the provisions stated in the detailed "Offer of Sale" elsewhere in this document or available at www.parker.com

