

Parker Tube Seals

Radial Sealing Solution for
Opposing Counter Bores



Great for Large Offset and High Pressure

Applications with a variable axial gap or other limitations to axial sealing rely on radial sealing solutions. Common sealing technologies require machining grooves into tubes and assembling seals onto both ends. Limitations of this technology include seals rolling and/or pinching, mis-assembled seals and limited mis-alignment capability. Another technology for sealing mis-aligned ports is a flexible hose. While this seals high radial mis-alignment, it requires clamping onto two pipes and can burst at higher pressures. These limitations lead to leaks, re-work and warranty claims.

Parker Hannifin Corporation
O-Ring & Engineered Seals Division
501 South Sycamore Street
Syracuse, IN 46567

phone 574 528 9400
fax 574 528 9640

www.parker.com



Parker Tube Seal Solution:

Parker Engineered Seals Division's tube seals are overmolded to a rigid insert creating a one piece sealing solution. This insert enables the tube seal to withstand much higher pressures than traditional seals. This technology is more durable than alternative solutions, eliminating the possibility for rolling or pinching during assembly. Installed into two simple counter-bores, tube seals are designed to accommodate radial port-to-port misalignment. Radial interference allows the seal to retain in the counter-bore reducing or eliminating assembly line rework and field warranty claims.

Applications:

Tube seals are available in a wide range of materials to accommodate applications such as coolant lines, turbo chargers, fuel lines, couplings, transmission clutch feed circuits, engine fluid ports and exhaust gas recirculation.

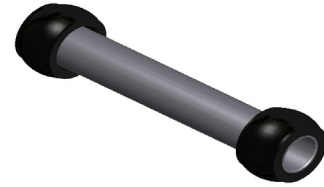
ENGINEERING YOUR SUCCESS.

Tube Seal Variations

Standard Tube Seals work well for typical bore to bore applications.



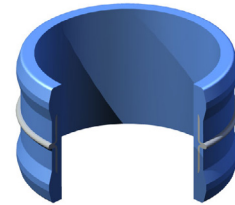
Assembled End Tube Seals allow for longer tube seals and for variable length tube seals.



Custom Tube Seals can be designed for special applications.

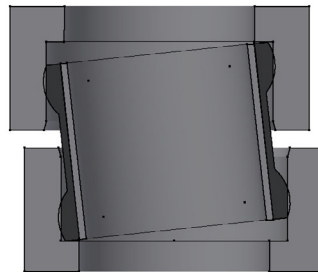
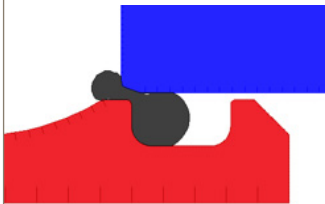
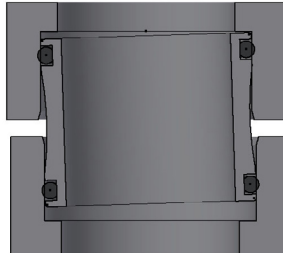


All Rubber End Tube Seals are good for lower load and more flexibility.



Improvement over Machined Tube with Loose Seal

- Higher offset capability (6°)
- Reduced part count
- Eliminates pinched seals
- Eliminates seal rolling



Improvement over Rubber Hose

- Higher pressure capability (up to 500 psi)
- Better durability
- Reduced part count
- Simpler assembly



WARNING:

FAILURE OR IMPROPER SELECTION OR IMPROPER USE OF THESE PRODUCTS CAN CAUSE EQUIPMENT FAILURE OR DAMAGE, PERSONAL INJURY OR DEATH.

For safe and trouble-free use of these products, it is important that you read and follow the Parker Seal Group Product Safety Guide. This Safety Guide can be referenced and downloaded free of charge at www.parkerseals.com. It is also printed in major Seal Group product catalogs and can be ordered by telephone without charge as Parker Publication No. PSG 5004 by calling 1-800-C-PARKER.

