



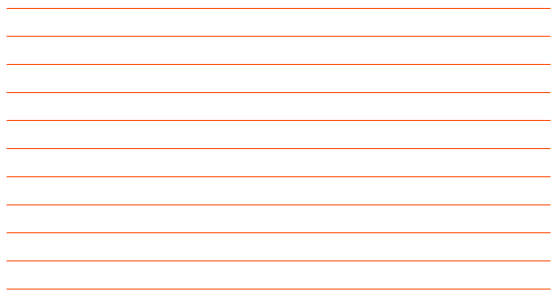
FLUIDPOWER

BULLETIN \*\*\*\*\*

# PARKER MOTORS/PUMPS PARTS & SERVICE

EFFECTIVE: AUGUST 1999

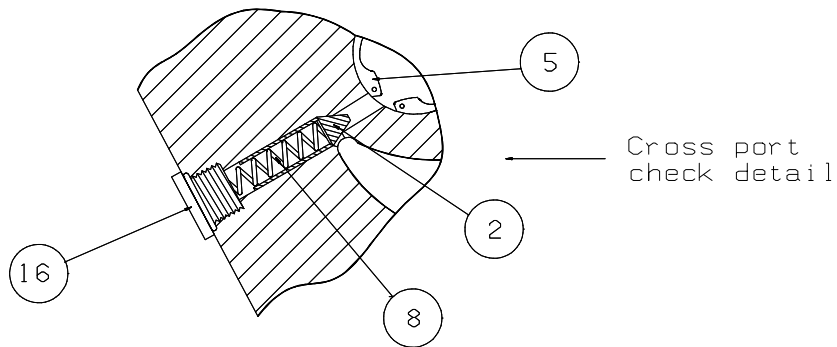
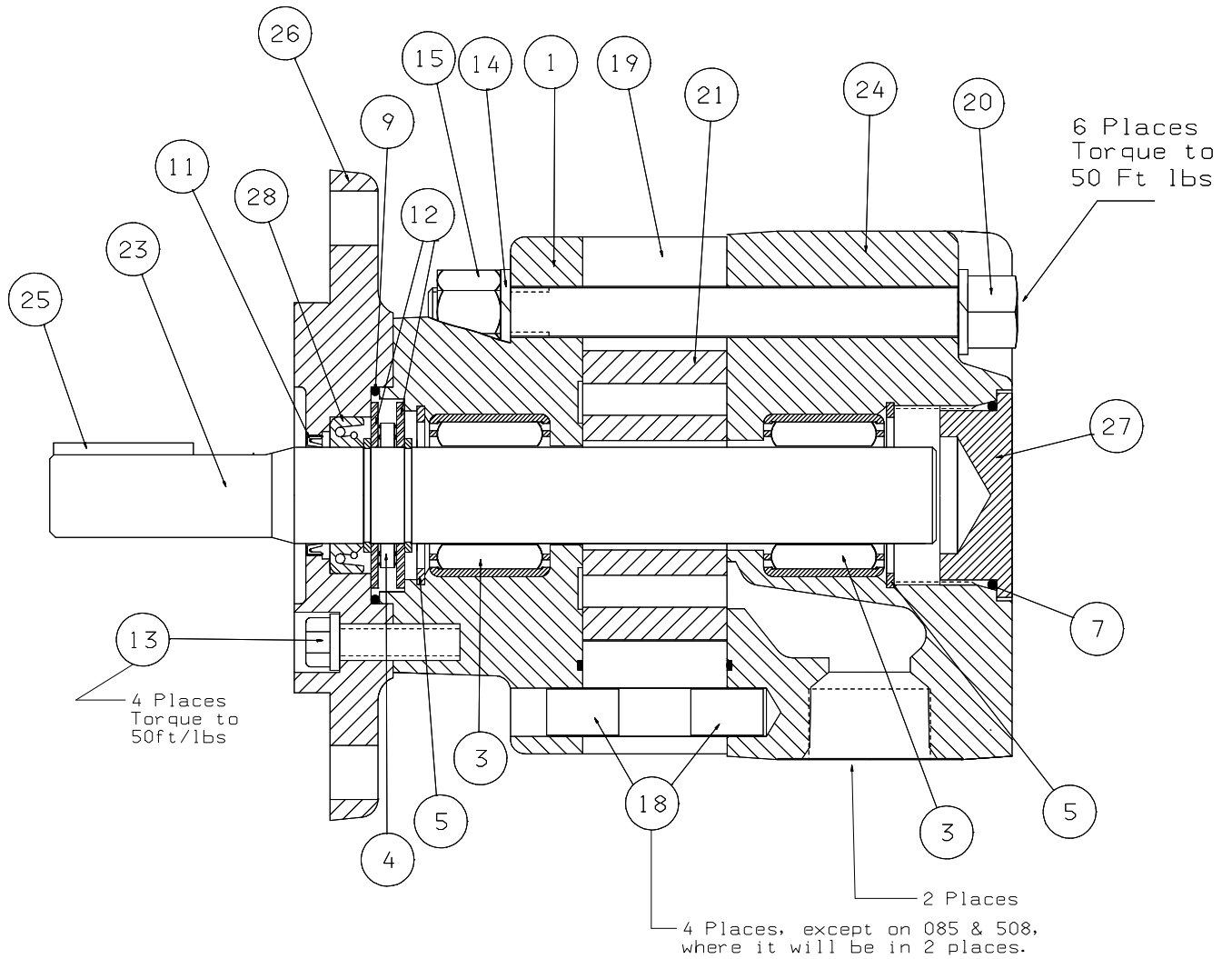
---

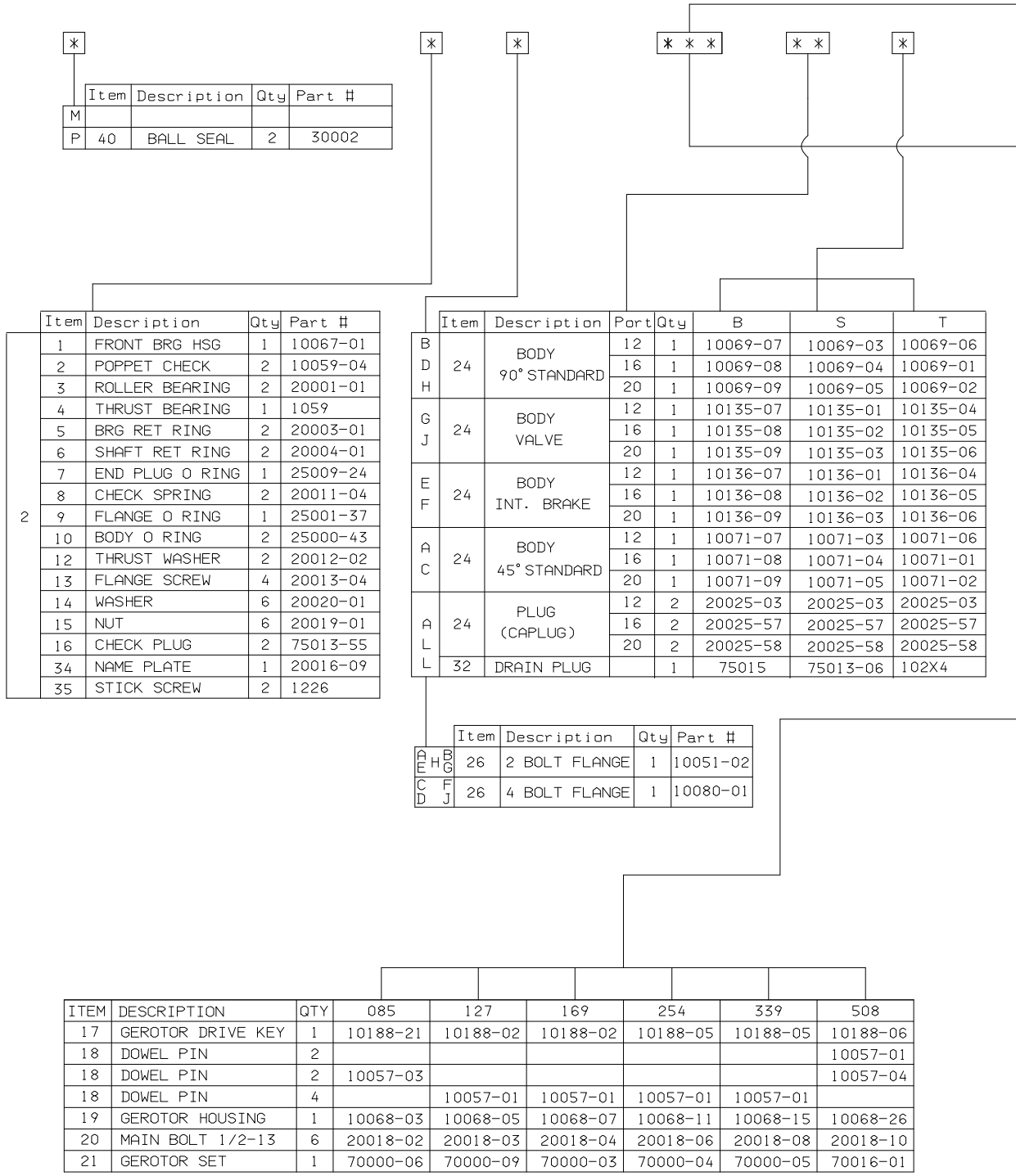


## M2/P2 SERIES GEROTOR TYPE HIGH SPEED MOTORS AND PUMPS SERVICE BULLETIN

---

PARKER HANNIFIN CORPORATION  
FLUIDPOWER PUMP/MOTOR DIV.  
100 PARKER DRIVE  
OTSEGO, MI 49078  
FAX# (616)694-4638  
PH# (616)694-9411





**	N	*
----	---	---

Item	Description	Qty	Part Number
0 B	28 SHAFT SEAL	1	20009-01
0 V	28 SHAFT SEAL	1	20009-02
B&V	11 DUST SEAL	1	1061
2 B	28 SHAFT SEAL	2	20009-01
2 V	28 SHAFT SEAL	2	20009-02
B&V	11 DUST SEAL	2	1061

Item	Description	Qty	085	127	169	254	339	508**
2 0	23 LONG KEY SHAFT	1	10239-03	10239-03	10239-03	10239-04	10239-04	10239-06
	25 KEY	1	10058-01	10058-01	10058-01	10058-01	10058-01	10058-01
	27 END PLUG	1	10060-01	10060-01	10060-01	10060-01	10060-01	10060-01
3 0	23 SHORT KEY SHAFT	1	10239-01	10239-01	10239-01	10239-02	10239-02	10239-05
	25 KEY	1	10058-01	10058-01	10058-01	10058-01	10058-01	10058-01
	27 END PLUG	1	10060-01	10060-01	10060-01	10060-01	10060-01	10060-01
4 0	23 13T SPL SHAFT	1	10240-02	10240-02	10240-02	10240-01	10240-01	10240-03
	27 END PLUG	1	10060-01	10060-01	10060-01	10060-01	10060-01	10060-01
2 2	23 KEY THRU SHAFT	1	*	*	*	*	*	*
	25 KEY	2	*	*	*	*	*	*
	27 END PLUG	1	10060-04	10060-04	10060-04	10060-04	10060-04	10060-04
4 2	23 SPL THRU SHAFT	1	*	*	*	*	*	*
	25 KEY	1	*	*	*	*	*	*
	27 END PLUG	1	10060-04	10060-04	10060-04	10060-04	10060-04	10060-04

\* These options are no longer available.  
\*\* Shafts on 508 disp are also valid for obsolete 424 disp.

Item	Description	Qty	Part #
0			
2 33	Shaft Protector	1	825613

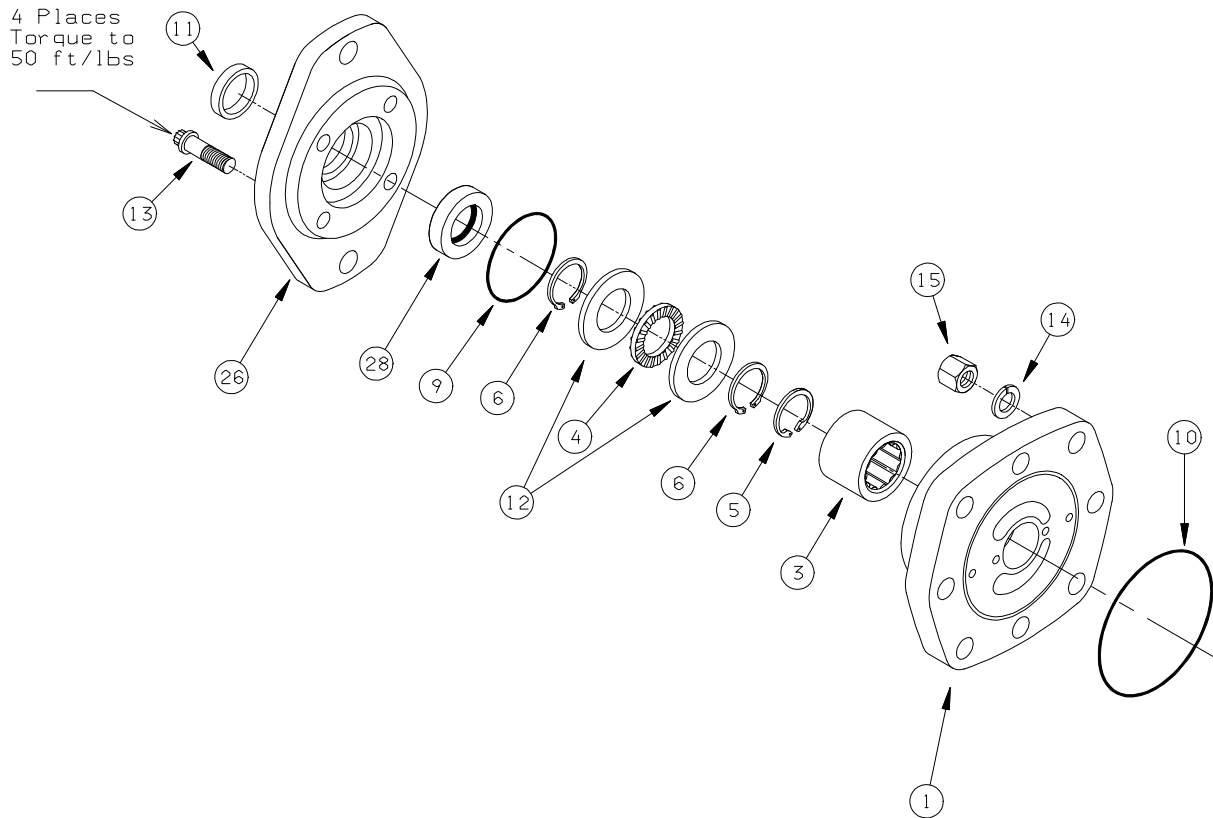
Item	Description	Qty	Part #
2 33	Shaft Protector	1	825613
3 33	Shaft Protector	1	825613
4 33	Shaft Protector	1	825614

Seal Kits: (20), (30), (40) shaft option	
Buna	80005-05
Flouroelastomer	80005-06

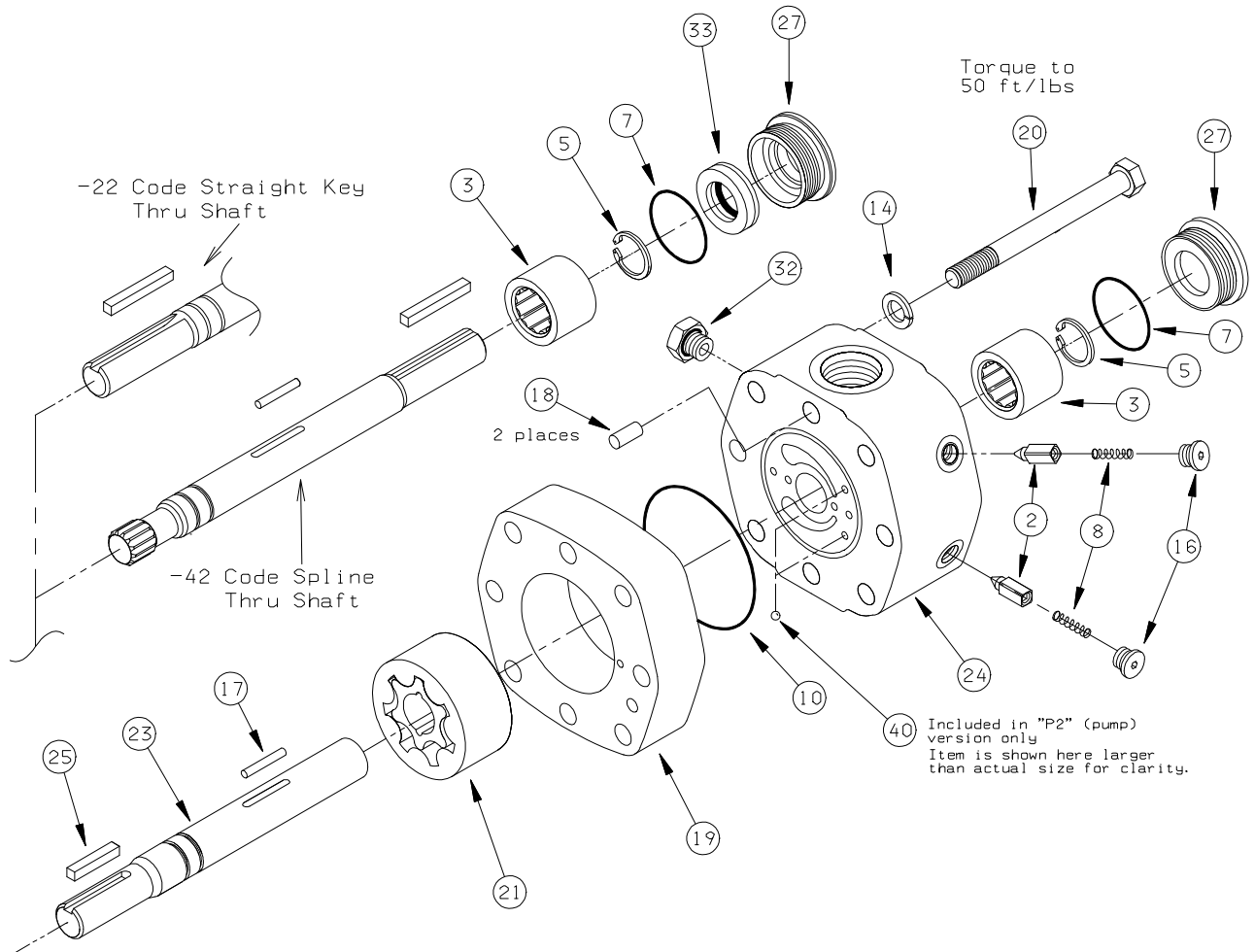
Seal Kits: (22), (42) shaft option	
Buna	③
Flouroelastomer	③

NOTES:

1. H body used on external pilot brake only.
2. No thru shaft option with G & J bodies.
3. No part number available: Must purchase standard seal kit plus corresponding shaft seal & dust seal.



22 and 42 design shaft option are obsolete.



## SERVICE AND OPERATIONAL NOTES:

- USE A CLEAN LUBRICANT (COMPATIBLE WITH THE WORKING FLUID) ON ALL MOTOR COMPONENTS DURING ASSEMBLY.
- CONNECT MOTOR CASE DRAIN DIRECTLY BACK TO TANK AND MAKE SURE TANK LINE DOES NOT SEE 400PSI OR GREATER PRESSURE.
- THERMAL SHOCK WARNING: IF THE MOTOR IS TO BE OPERATED BY FLUID WHICH IS 80°F OR MORE ABOVE THE OPERATING ENVIRONMENT TEMPERATURE, CONSULT THE FACTORY.
- A HYDRAULIC MOTOR IS NOT DESIGNED TO HOLD A SUSPENDED LOAD. IF THE APPLICATION REQUIRES A LOCKED POSITION, A MECHANICAL LOAD HOLDING DEVICE (SUCH AS A BRAKE) MUST BE EMPLOYED.