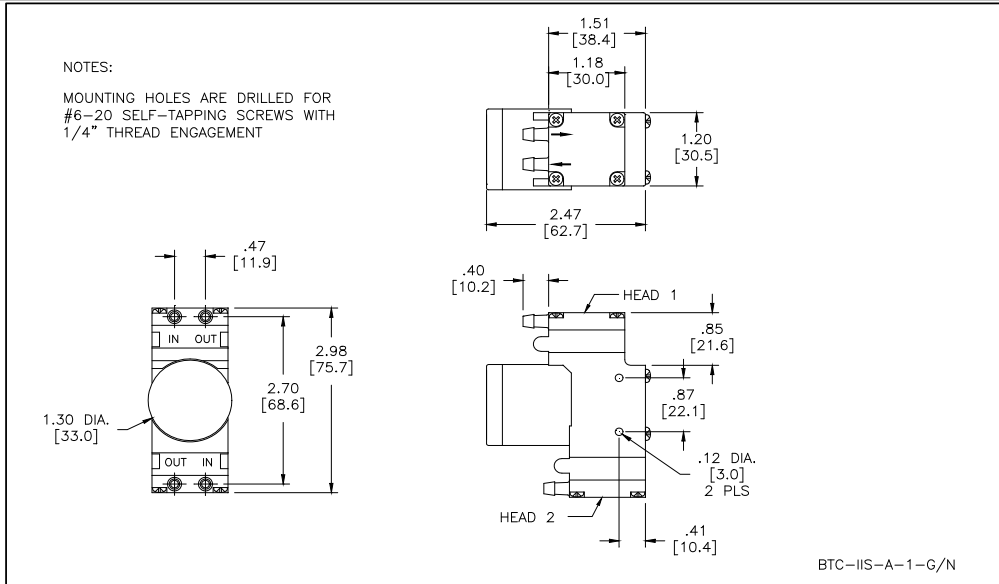




Mooresville, North Carolina 28117  
 T: 704-662-3500 F: 704-662-8744  
 www.hargravesfluidics.com

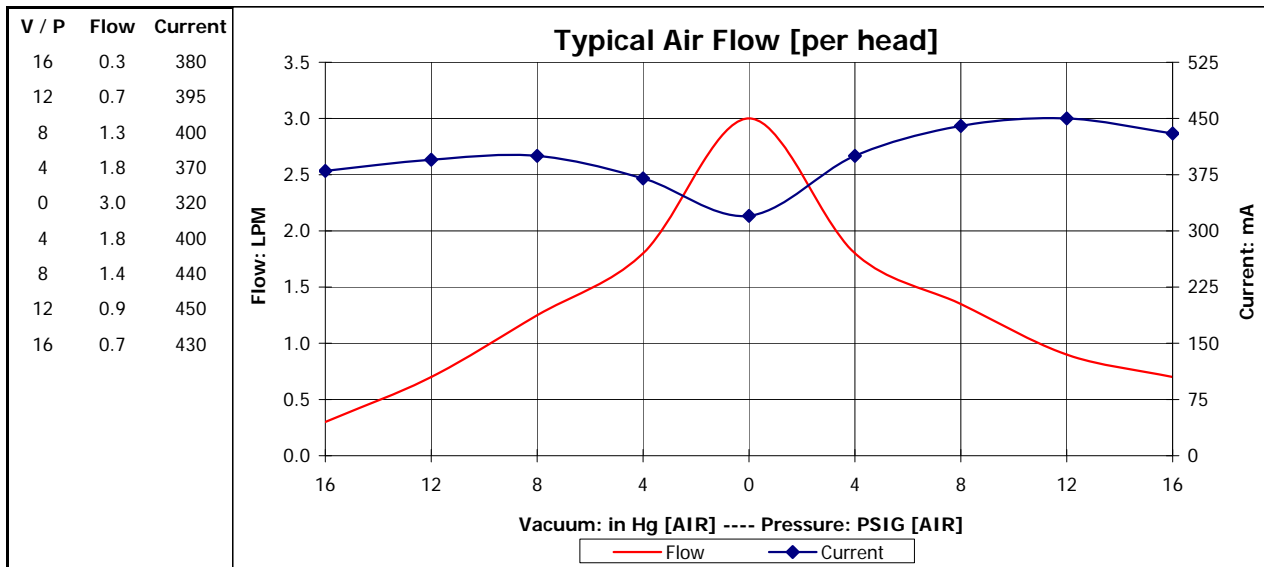
Part No.: **D773-11**  
 Model No.: **C.1F30G1.1F30N1.A12VDC**  
 Description: **BTC-IIS Diaphragm Pump, Brushless Motor**

**Dimensional Layout:**



**Specifications:**

- |                             |                        |                     |                       |                     |                                       |  |
|-----------------------------|------------------------|---------------------|-----------------------|---------------------|---------------------------------------|--|
| <b>1. Wetted Materials:</b> | Pump Head:             | Vectra [LCP]        | <b>3. Electrical:</b> | Motor:              | Brushless, Dual Bearing               |  |
|                             | Retainer Washer:       | 2024 Alum [800/800] |                       | Operating Voltage:  | 12.0 VDC                              |  |
|                             | Retainer Screw:        | 316 Stainless       |                       | In-rush Current:    | 5 x Operating Current for up to 50 ms |  |
|                             | Valves:                | EPDM [Q55/Q55]      |                       | Recommended Fusing: | Slow Blow @ 2 x Operating Current     |  |
|                             | Diaphragm:             | AEPDM [F80/F80]     |                       |                     |                                       |  |
|                             | Gasket:                | EPDM [65/65]        |                       |                     |                                       |  |
| <b>2. Performance:</b>      |                        | <u>Continuous</u>   | <u>Maximum</u>        | <b>4. Other:</b>    | Temperature Range:                    | 5 - 50° C  |
|                             | - Vacuum: in Hg [AIR]  | Head 1:             | 16.0                  |                     | 17.0                                  | Free Flow RPM:   |
|                             |                        | Head 2:             | 16.0                  | 17.0                | Eccentric:                            | A430   |
|                             | - Pressure: PSIG [AIR] | Head 1:             | 16.0                  | 19.0                | <b>5. Operating Limitations:</b>      | Not configured for series operation                            |
|                             |                        | Head 2:             | 16.0                  | 19.0                | <b>6. Recommended Filtration:</b>     | 40 Micron media w/ a minimum surface area of .52" Sq (336mmSq) |



The above graph denotes nominal performance at 800' above sea level, 24°C, and at the specified voltage.

PR