

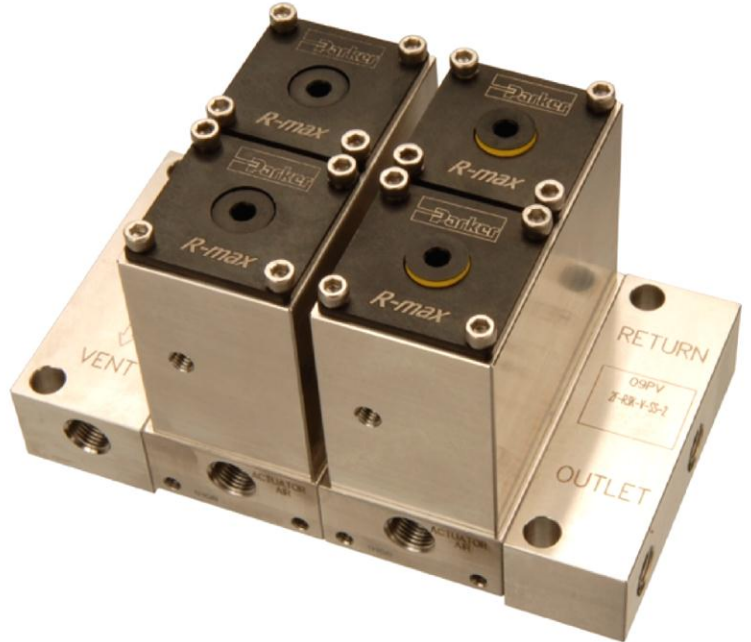
# Parker R-max II

Enhanced features provide the optimum performance in stream selection



The Parker R-Max II provides increased reliability, flexibility and improved serviceability.

- Surface Mount Technology
- Low Internal Volume
- Modular Valve Design
- Internal Loop Design
- Female NPT or Inverted Compression ports
- 316 stainless steel construction
- 100% factory tested



## Enhanced Product Features:

## Enhanced Product Benefits:

<ul style="list-style-type: none"> <li>• Enhanced Position Indication</li> </ul>	<ul style="list-style-type: none"> <li>• Easy recognition of valve actuation for improved troubleshooting.</li> <li>• Backward compatible with current R-Max. Easy replacement using common tools.</li> </ul>
<ul style="list-style-type: none"> <li>• Captured Vent</li> </ul>	<ul style="list-style-type: none"> <li>• Low pressure vent header separates sample stream from actuation air pressure preventing cross contamination.</li> </ul>
<ul style="list-style-type: none"> <li>• Backward Compatible Valve Body</li> </ul>	<ul style="list-style-type: none"> <li>• Valve Body fits onto existing Bases for simple retrofit.</li> </ul>
<ul style="list-style-type: none"> <li>• Effortless Cartridge Removal</li> </ul>	<ul style="list-style-type: none"> <li>• Improved ease of Cartridge removal for quick change out of serviceable components.</li> </ul>
<ul style="list-style-type: none"> <li>• Dedicated atmospheric reference port for ARV function</li> </ul>	<ul style="list-style-type: none"> <li>• Allows the use of the internal fast loop option on GC applications.</li> <li>• Backward compatible with current R-Max.</li> </ul>

## Contact Information

Parker Hannifin Corporation  
**Instrumentation Products Division**  
 1005 A Cleaner Way  
 Huntsville, AL 35805

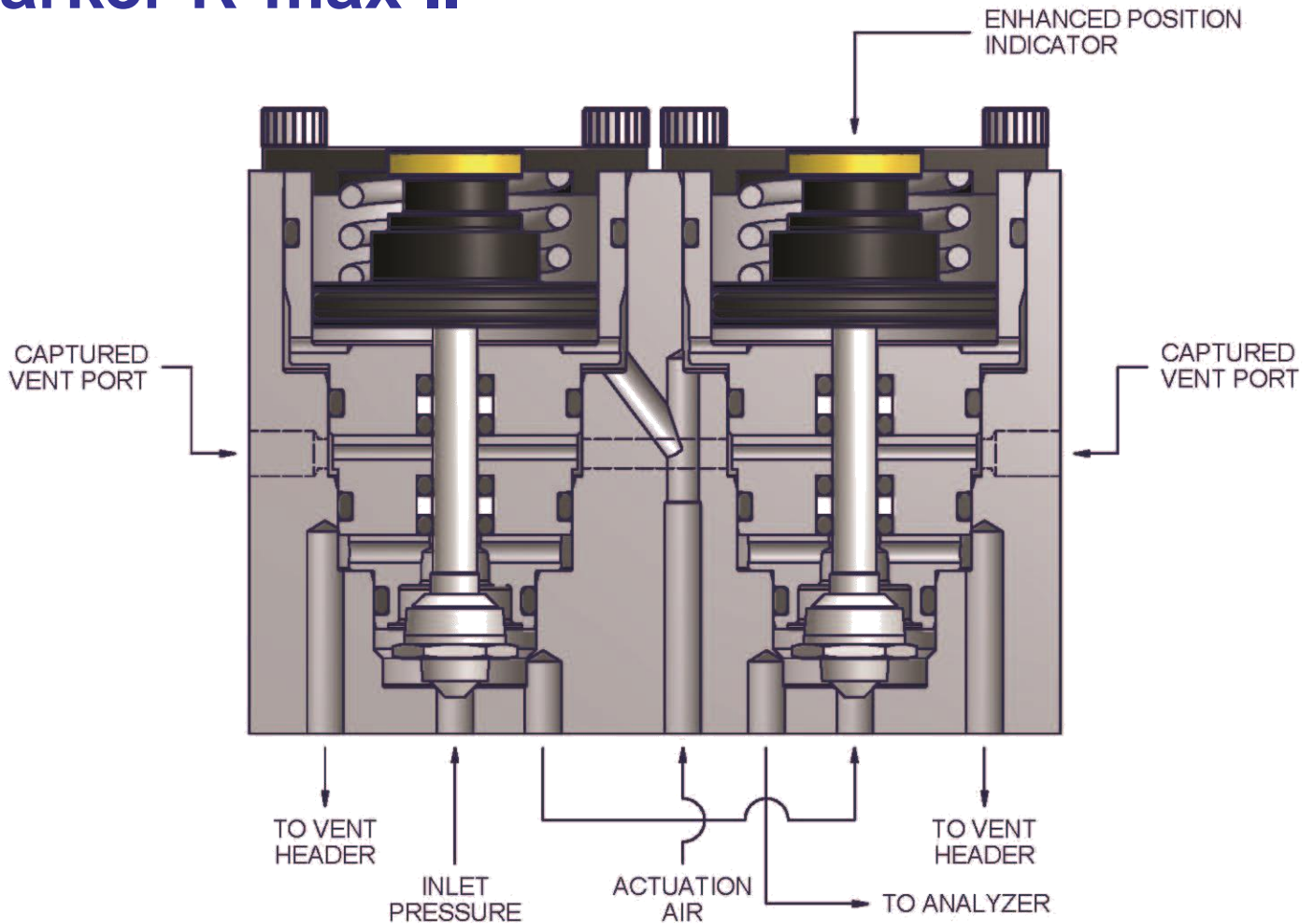
phone 256.881.2040  
 fax 256.881.5730  
 ipdsales@parker.com

[www.parker.com/ipdus](http://www.parker.com/ipdus)



ENGINEERING YOUR SUCCESS.

# Parker R-max II



## Captured Vent Option

The **captured vent** has 10-32 threads.

Porting options include fittings for use with:

- 1/8" and 1/4" plastic tubing
- 1/8" and 1/4" SS tubing
- 10-32 Plug

R-Max II available for **Parker IntraFlow™** Surface Mount Systems.

## Specifications

- **Pressure Rating:**  
500 psig (34 bar)
- **Temperature Ratings:**
  - Fluorocarbon Rubber  
-15°F to 400°F (-26°C to 204°C)
  - Buna-N Rubber  
-30°F to 275°F (-34°C to 135°C)
  - Ethylene Propylene Rubber  
-70° to 275°F (-57°C to 135°C)
  - Neoprene Rubber  
-45°F to 250°F (-43°C to 121°C)
  - Highly Fluorinated Fluorocarbon Rubber  
-25°F to 200°F (-32°C to 93°)

