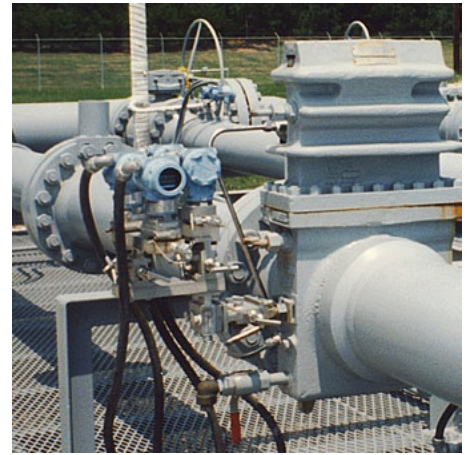


Lock-Out / Tag-Out Bonnet Handle System

For Safe and Secure Measurement



Simple, Safe and Secure with No Lost Handles

Make Parker's Lock-Out / Tag-Out Bonnet Handle System an essential part of your safety and security program by preventing unauthorized valve cycling.

The one-of-a-kind visual indicator system shows whether your valve is open or closed with the lock in place.



Contact Information:

Parker Hannifin Corporation
PGI Division
16101 Vallen Drive
Houston, TX 77041 USA

phone 713 466 0056
fax 800 568 9228
pgi_sales@parker.com

www.pgiint.com
www.parker.com

Product Features:

- Available in .187" and .375" orifice Patented Pressure-Core® Stem Sealing System with 5-year leak-free, maintenance-free warranty.
- Grafoil® and PTFE packed available without visual indicator.
- Available on:
 - Instrument 2-valve, 3-valve and 5-valve manifolds
 - Hand / Gauge / Bleeder / Multiport / Root valves
 - Block & Bleed/ Double Block & Bleed valves



ENGINEERING YOUR SUCCESS.

Bonnet Handle Lock-Out

Parker's one-of-a-kind visual indicator system shows you whether your valve is open or closed with the lock in place.

When green is showing, your valve is open; if no color is showing, the valve is closed.



Easy Operation and Verification

It's just this easy!

1. Place valve in desired OPEN or CLOSED position.
2. Visually verify position (green = open; no color = closed).
3. Raise integral handle away from valve body.
4. Install your lock.

Safety Guide – See www.parker.com/safety.

© 2014 Parker Hannifin Corporation

PGI-LOTO Feb 2014



ENGINEERING YOUR SUCCESS.