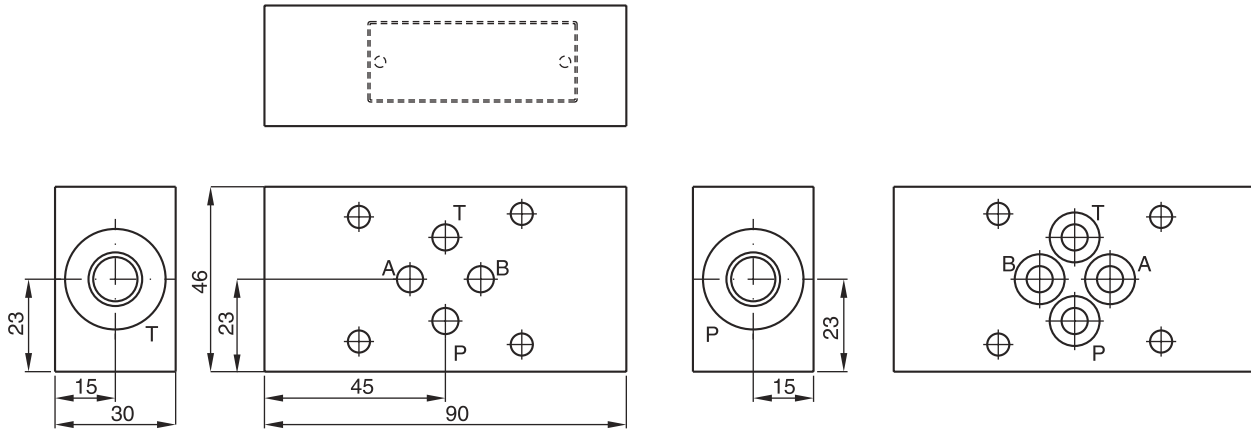
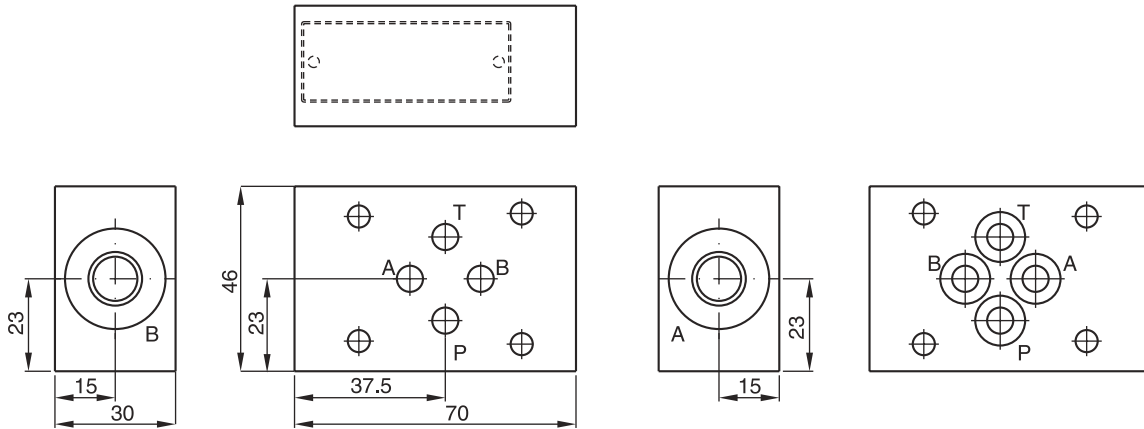


**Sandwich plate H06-1044, CETOP 03 / NG06**



Symbol	Ordering code
	<p><b>H06-1044</b>                  CETOP 03                  (O-rings included in delivery)</p>

**Sandwich plate H06-1039, CETOP 03 / NG06**



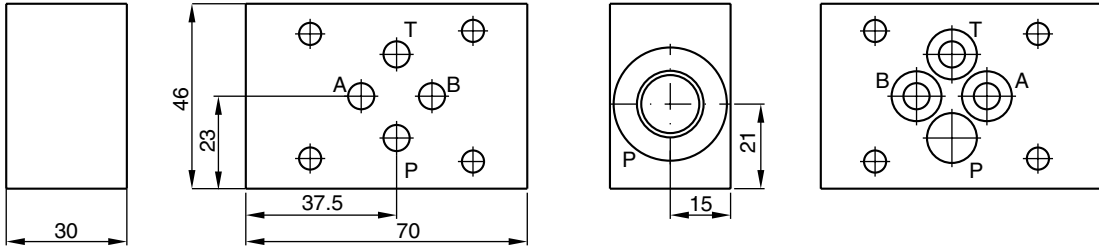
Symbol	Ordering code
	<p><b>H06-1039</b>                  CETOP 03                  (O-rings included in delivery)</p>

12



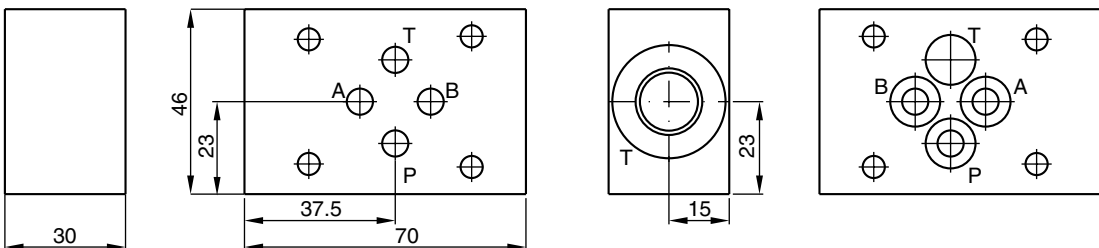
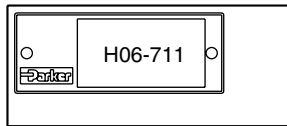
**Characteristics**

**Sandwich plate H06-504, CETOP 03 / NG06**

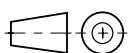


Symbol	Ordering code
	<p><b>H06-504</b> CETOP 03 (O-rings included in delivery)</p>

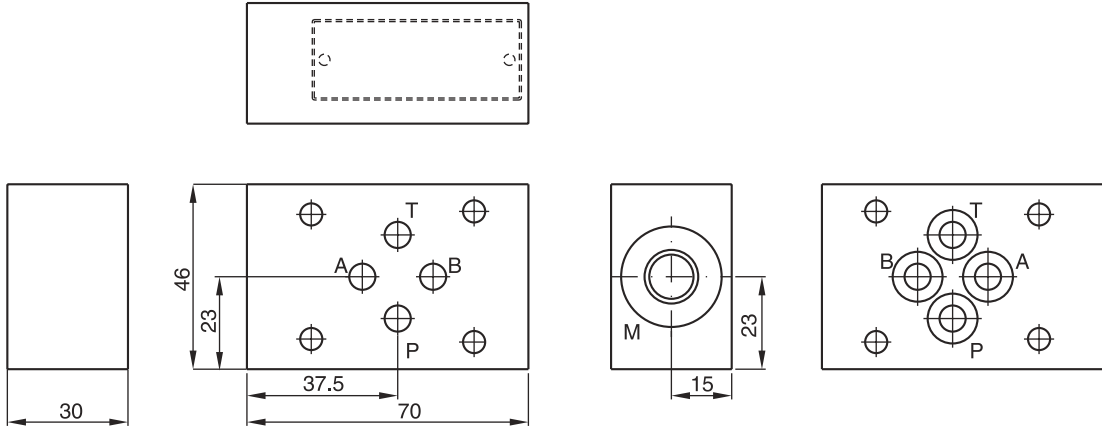
**Sandwich plate H06-711, CETOP 03 / NG06**



Symbol	Ordering code
	<p><b>H06-711</b> CETOP 03 (O-rings included in delivery)</p>



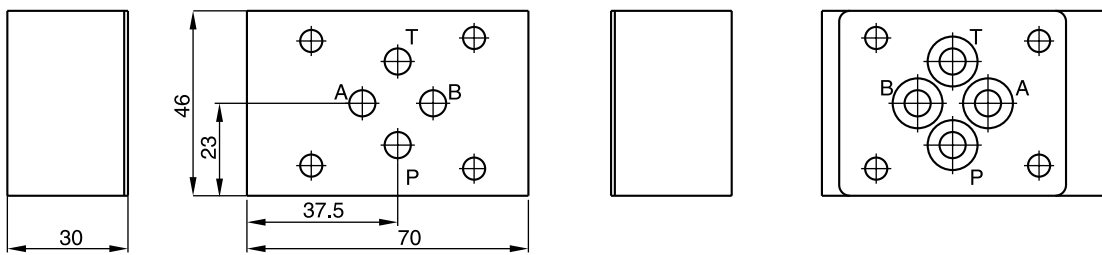
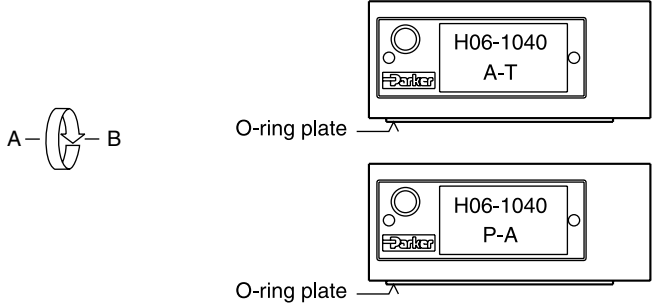
**Sandwich plate H06-1274, CETOP 03 / NG06**



Symbol	Ordering code
	<p><b>H06-1274</b>                      CETOP 03                      (O-rings included in delivery)</p>

**Sandwich plate H06-1040, CETOP 03 / NG06**

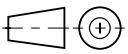
The functional change is achieved by rotating the mounting position of the valve 180°.



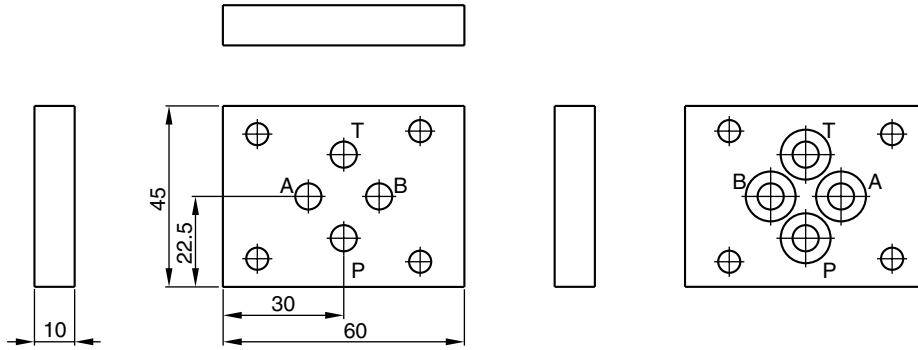
Symbol	Ordering code
	<p><b>H06-1040</b>                      CETOP 03                      (O-rings and O-ring plate included in delivery)</p>

12

H06.INDD CM 08.12.14



**Sandwich plate H06DO-1291, CETOP 03 / NG06**



Symbol	Ordering code
	<b>H06DO-1291</b> CETOP 03 (O-rings included in delivery)

**Sandwich plate H06DU-814, CETOP 03 / NG06**

To mount a flow control valve GFG for meter-in (code P) or meter-out (code S) control.

The functional change is achieved by rotating the mounting position of the valve 180°.

For use as secondary control please observe the permitted tank pressure.

Ordering code
<b>H06DU-814</b> CETOP 03 (O-rings and O-ring plate included in delivery)

