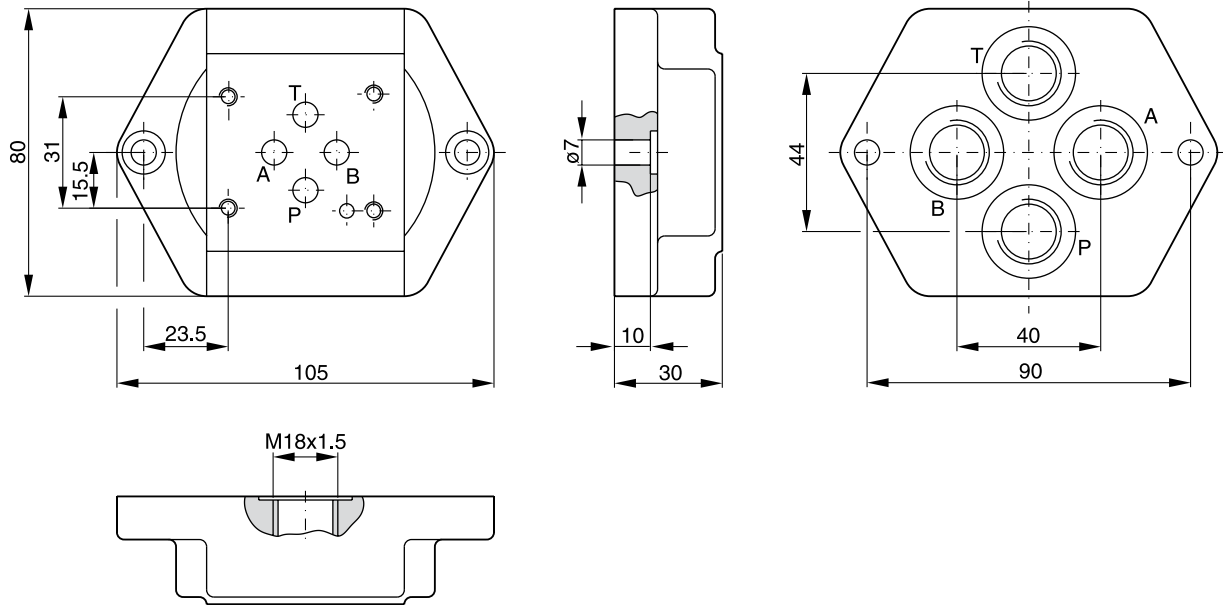


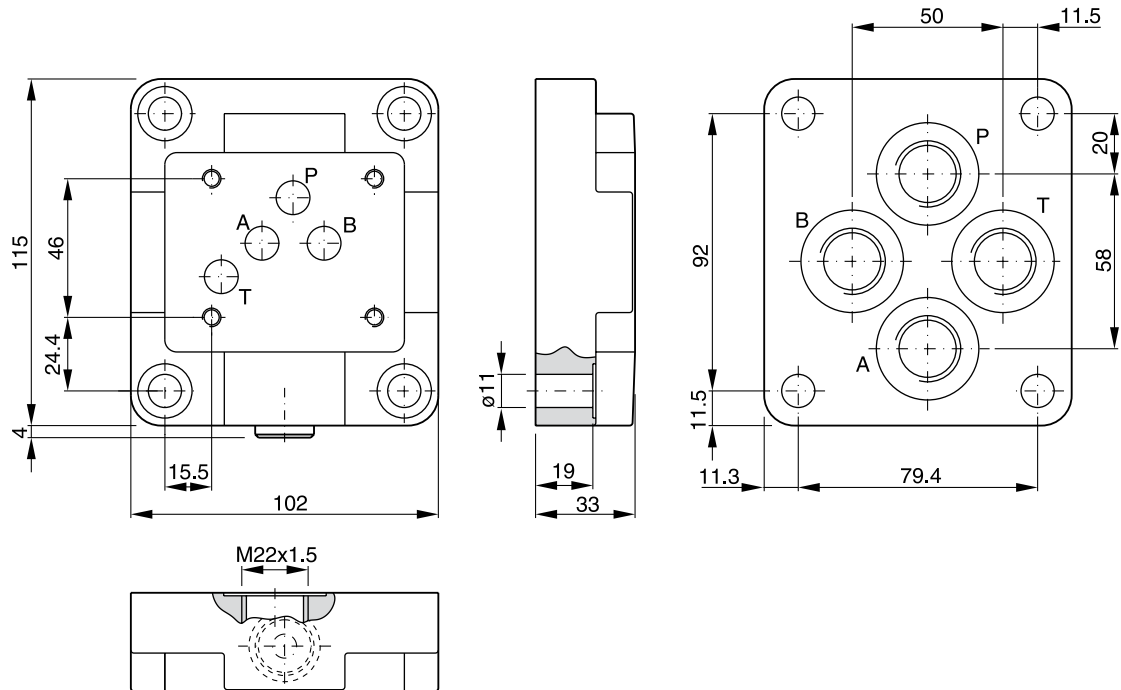
Characteristics

Valve size DIN NG06, CETOP 03, NFPA D03



Order. code	
A 064 M	P, A, B and T = M18x1.5 as per ISO 6149

Valve size DIN NG10, CETOP 05, NFPA D05



Order. code	
A 104 M	P, A, B and T = M22x1.5 as per ISO 6149

**Bold letters =
Short-term availability**

