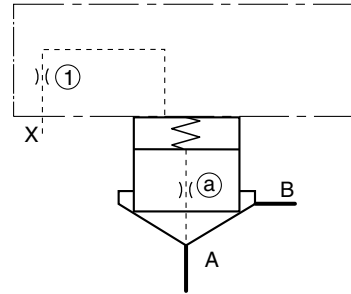
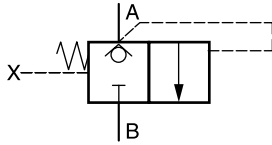


2-Way Function

2-way seat valve, flow A ⇒ B

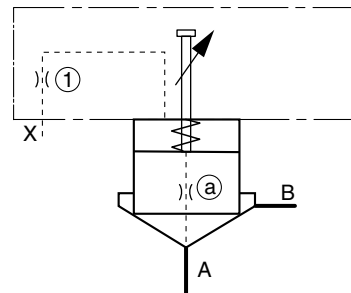
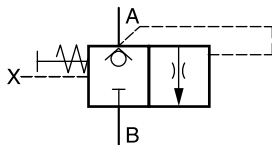


Description	Type							
	NG16	NG25	NG32	NG40	NG50	NG63	NG80	NG100
Cover <sup>1)</sup>	C016AA*	C025AA*	C032AA*	C040AA*	C050AA*	C063AA*	C080AA*	C100AA*
Cover orifice (1)	1/16xØ0.8	1/16xØ1.0	1/16xØ1.2	1/8xØ1.5	1/8xØ1.8	1/8xØ2.0	1/8xØ2.2	1/8xØ2.5
Cartridge <sup>2)</sup>	CE016C01*	CE025C01*	CE032C01*	CE040C01*	CE050C01*	CE063C01*	CE080C01*	CE100C01*
Poppet orifice (a)	1/16xØ00							
Spring	1.6 bar, type S							
Bolt kit cover	BK414 4x M8x40	BK391 4x M12x50	BK415 4x M16x55	BK416 4x M20x70	BK417 4x M20x75	BK418 4x M30x100	BK419 8x M24x120	BK509 8x M30x130

Shown orifice Ø and springs are recommendations.  
xxØ00 = closed bottom NG16 - NG50, plug NG63 - NG100  
xxØ99 = open

<sup>1)</sup> Complete type see ordering code C\*A.  
<sup>2)</sup> Complete type see ordering code CE\*.

8 2-way seat valve with stroke limiter, flow A ⇒ B



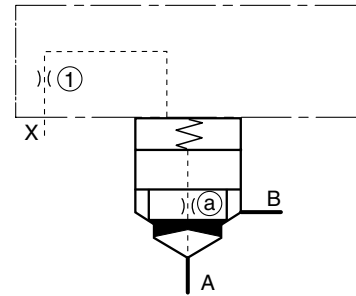
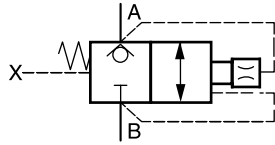
Description	Type							
	NG16	NG25	NG32	NG40	NG50	NG63	NG80	NG100
Cover <sup>1)</sup>	C016B**	C025B**	C032B**	C040B**	C050B**	C063B**	C080B**	C100B**
Cover orifice (1)	M6xØ0.8	M6xØ1.0	1/16xØ1.2	1/16xØ1.5	1/16xØ1.8	1/8xØ2.0	1/8xØ2.2	1/8xØ2.5
Cartridge <sup>2)</sup>	CE016C01*	CE025C01*	CE032C01*	CE040C01*	CE050C01*	CE063C01*	CE080C01*	CE100C01*
Poppet orifice (a)	1/16xØ00							
Spring	1.6 bar, type S							
Bolt kit cover	BK414 4x M8x40	BK391 4x M12x50	BK415 4x M16x55	BK416 4x M20x70	BK417 4x M20x75	BK418 4x M30x100	BK419 8x M24x120	BK509 8x M30x130

Shown orifice Ø and springs are recommendations.  
xxØ00 = closed bottom NG16 - NG50, plug NG63 - NG100  
xxØ99 = open

<sup>1)</sup> Complete type see ordering code C\*B.  
<sup>2)</sup> Complete type see ordering code CE\*.

2-Way Function

2-way functions with dampening poppet, flow A ⇌ B

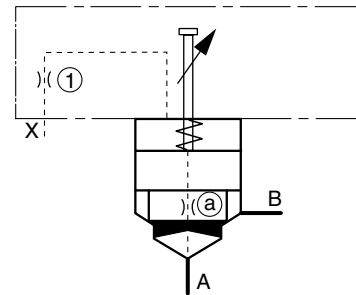
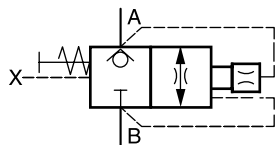


Description	Type							
	NG16	NG25	NG32	NG40	NG50	NG63	NG80	NG100
Cover <sup>1)</sup>	C016AA*	C025AA*	C032AA*	C040AA*	C050AA*	C063AA*	C080AA*	C100AA*
Cover orifice (1)	1/16xØ0.8	1/16xØ1.0	1/16xØ1.2	1/8xØ1.5	1/8xØ1.8	1/8xØ2.0	1/8xØ2.2	1/8xØ2.5
Cartridge <sup>2)</sup>	CE016C08*	CE025C08*	CE032C08*	CE040C08*	CE050C08*	CE063C08*	CE080C08*	CE100C08*
Poppet orifice (a)	1/16xØ00							
Spring	1.6 bar, type S							
Bolt kit cover	BK414 4x M8x40	BK391 4x M12x50	BK415 4x M16x55	BK416 4x M20x70	BK417 4x M20x75	BK418 4x M30x100	BK419 8x M24x120	BK509 8x M30x130

Shown orifice Ø and springs are recommendations.  
xxØ00 = plug  
xxØ99 = open

<sup>1)</sup> Complete type see ordering code C\*A.  
<sup>2)</sup> Complete type see ordering code CE\*.

2-way functions with stroke limiter and dampening poppet, flow A ⇌ B



Description	Type							
	NG16	NG25	NG32	NG40	NG50	NG63	NG80	NG100
Cover <sup>1)</sup>	C016B*	C025B*	C032B*	C040B*	C050B*	C063B*	C080B*	C100B*
Cover orifice (1)	M6xØ0.8	M6xØ1.0	1/16xØ1.2	1/16xØ1.5	1/16xØ1.8	1/8xØ2.0	1/8xØ2.2	1/8xØ2.5
Cartridge <sup>2)</sup>	CE016C08*	CE025C08*	CE032C08*	CE040C08*	CE050C08*	CE063C08*	CE080C08*	CE100C08*
Poppet orifice (a)	1/16xØ00							
Spring	1.6 bar, type S							
Bolt kit cover	BK414 4x M8x40	BK391 4x M12x50	BK415 4x M16x55	BK416 4x M20x70	BK417 4x M20x75	BK418 4x M30x100	BK419 8x M24x120	BK509 8x M30x130

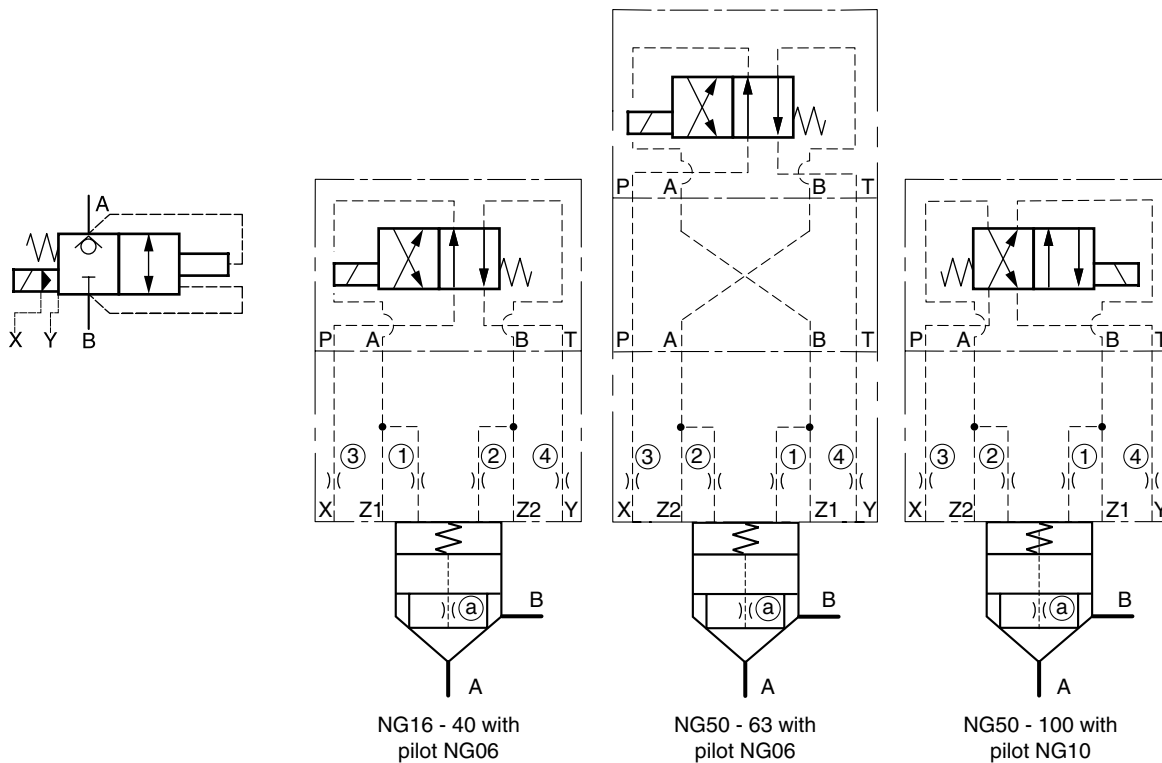
Shown orifice Ø and springs are recommendations.  
xxØ00 = plug  
xxØ99 = open

<sup>1)</sup> Complete type see ordering code C\*B.  
<sup>2)</sup> Complete type see ordering code CE\*.



2-Way Function

2-way seat valve with pilot, normally closed, flow A ⇌ B



8

Description	Type										
	Pilot NG06						Pilot NG10				
	NG16	NG25	NG32	NG40	NG50	NG63	NG50	NG63	NG80	NG100	
4/2-DC valve <sup>1)</sup>	D1VW20B*						D3W20H*				
Adaptor plate <sup>2)</sup>	without						without				
Cover <sup>3)</sup>	C016CA*	C025CA*	C032CA*	C040CA*	C050CA*	C063CA*	C050CA*	C063CA*	C080CA*	C100CA*	
Cover orifice ①	M5xØ0.8	M5xØ1.0	M5xØ1.2	M5xØ1.5	M6xØ1.8	M6xØ2.0	M6xØ1.8	M6xØ2.0	1/16xØ2.2	1/16xØ2.5	
Cover orifice ②	M5xØ00				M6xØ00				1/16xØ00		
Cover orifice ③	M5xØ1.0	M6xØ1.2	M6xØ1.5	M6xØ1.8	M8xØ2.0	M8xØ2.2	M8xØ2.0	M8xØ2.2	M10x1xØ2.5	M10x1xØ3.0	
Cover orifice ④	M5xØ99	M6xØ99				M8xØ99C				M10x1xØ99	
Cartridge <sup>4)</sup>	CE016C04*	CE025C04*	CE032C04*	CE040C04*	CE050C04*	CE063C04*	CE050C04*	CE063C04*	CE080C04*	CE100C04*	
Poppet orifice (a)	1/16NPTxØ00										
Spring	1.6 bar, type S										
Bolt kit cover	BK414 4x M8x40	BK391 4x M12x50	BK415 4x M16x55	BK416 4x M20x70	BK417 4x M20x75	BK418 4x M30x100	BK419 8x M24x120	BK509 8x M30x130	BK419 8x M24x120	BK420 8x M30x140	
Bolt kit pilot	BK375 4x M5x30						BK385 4x M6x40				

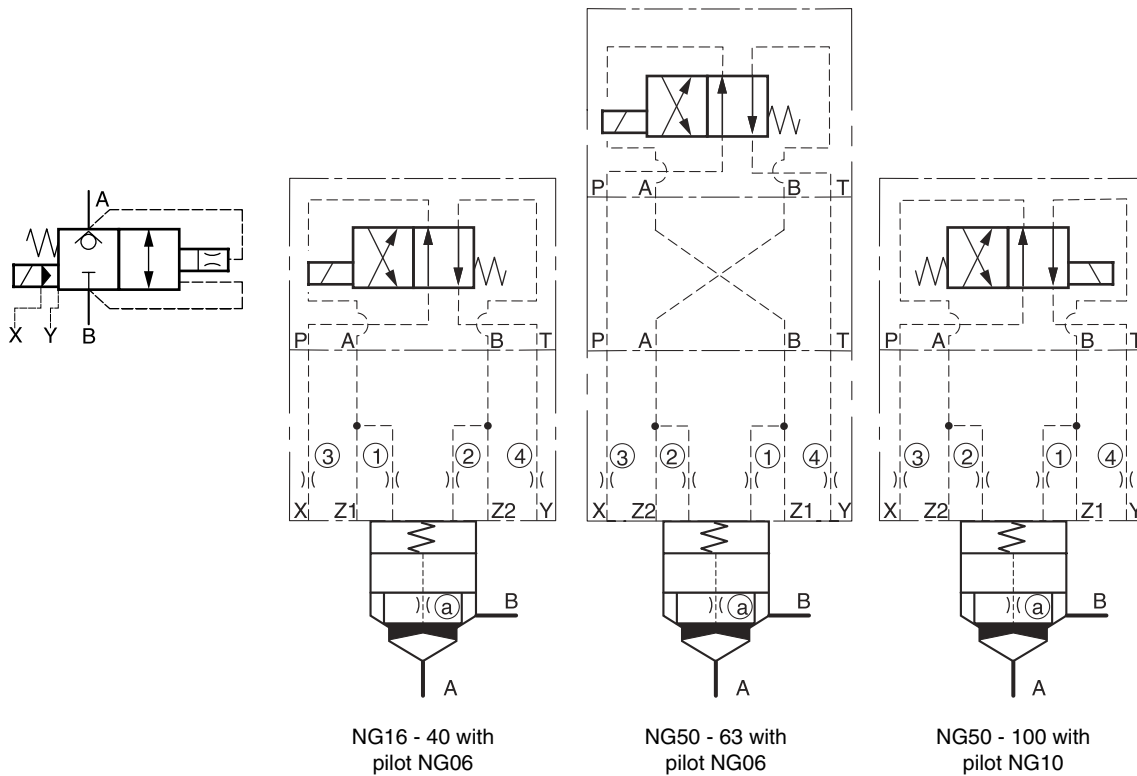
Shown orifice Ø and springs are recommendations.  
xxØ00 = closed bottom NG16 - NG50, plug NG63 - NG100  
xxØ99 = open

<sup>1)</sup> Complete type see chapter "Directional Control Valves", series D1VW, D3W.  
<sup>2)</sup> NG10-NG06 inclusive O-rings and mounting bolts.  
<sup>3)</sup> Complete type see ordering code C\*C.  
<sup>4)</sup> Complete type see ordering code CE\*.

Adaptor plates see chapter 12.

2-Way Function

2-way seat valve with pilot and dampening poppet, normally closed, flow A ⇌ B



Description	Type									
	Pilot NG06						Pilot NG10			
	NG16	NG25	NG32	NG40	NG50	NG63	NG50	NG63	NG80	NG100
4/2-DC valve <sup>1)</sup>	D1VW20B*						D3W20H*			
Adaptor plate <sup>2)</sup>	without						without			
Cover <sup>3)</sup>	C016CA*	C025CA*	C032CA*	C040CA*	C050CA*	C063CA*	C050CA*	C063CA*	C080CA*	C100CA*
Cover orifice ①	M5xØ0.8	M5xØ1.0	M5xØ1.2	M5xØ1.5	M6xØ1.8	M6xØ2.0	M6xØ1.8	M6xØ2.0	1/16xØ2.2	1/16xØ2.5
Cover orifice ②	M5xØ00				M6xØ00			1/16xØ00		
Cover orifice ③	M5xØ1.0	M6xØ1.2	M6xØ1.5	M6xØ1.8	M8xØ2.0	M8xØ2.2	M8xØ2.0	M8xØ2.2	M10x1xØ2.5	M10x1xØ3.0
Cover orifice ④	M5xØ99	M6xØ99			M8xØ99C			M10x1xØ99		
Cartridge <sup>4)</sup>	CE016C08*	CE025C08*	CE032C08*	CE040C08*	CE050C08*	CE063C08*	CE050C08*	CE063C08*	CE080C08*	CE100C08*
Poppet orifice (a)	1/16NPTxØ00									
Spring	1.6 bar, type S									
Bolt kit cover	BK414 4x M8x40	BK391 4x M12x50	BK415 4x M16x55	BK416 4x M20x70	BK417 4x M20x75	BK418 4x M30x100	BK419 8x M24x120	BK509 8x M30x130	BK419 8x M24x120	BK420 8x M30x140
Bolt kit pilot	BK375 4x M5x30						BK385 4x M6x40			

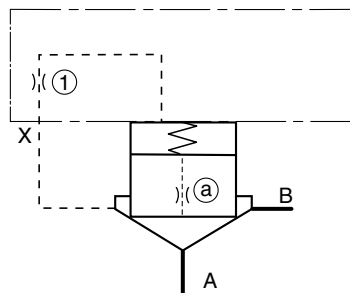
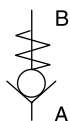
Shown orifice Ø and springs are recommendations.  
xxØ00 = plug  
xxØ99 = open

<sup>1)</sup> Complete type see chapter "Directional Control Valves", series D1VW, D3W.  
<sup>2)</sup> NG10-NG06 inclusive O-rings and mounting bolts.  
<sup>3)</sup> Complete type see ordering code C\*.  
<sup>4)</sup> Complete type see ordering code CE\*.

Adaptor plates see chapter 12.

**Check Function**

Check valve, flow A ⇒ B



Description	Type							
	NG16	NG25	NG32	NG40	NG50	NG63	NG80	NG100
Cover <sup>1)</sup>	C016AA*	C025AA*	C032AA*	C040AA*	C050AA*	C063AA*	C080AA*	C100AA*
Cover orifice ①	M5xØ99				M6xØ99		1/16xØ99	
Cartridge <sup>2)</sup>	CE016C01*	CE025C01*	CE032C01*	CE040C01*	CE050C01*	CE063C01*	CE080C01*	CE100C01*
Poppet orifice ②	1/16NPTxØ00							
Spring	1.6 bar, type S							
Bolt kit cover	BK414 4x M8x40	BK391 4x M12x50	BK415 4x M16x55	BK416 4x M20x70	BK417 4x M20x75	BK418 4x M30x100	BK419 8x M24x120	BK509 8x M30x130

Shown orifice Ø and springs are recommendations.  
xxØ00 = closed bottom NG16 - NG50, plug NG63 - NG100  
xxØ99 = open

<sup>1)</sup> Complete type see ordering code C\*A.  
<sup>2)</sup> Complete type see ordering code CE\*.