

Cylinder Mounting Accessories

Load Rated Mounting Solutions from Parker Industrial Cylinder Division



Customer Value Proposition:

Parker's wide selection of Cylinder Mounting Accessories is load rated for accurate selection to match the application. Our new cast clevis brackets and eye brackets have load ratings that exceed the maximum thrust of heavy duty hydraulic Series 2H and 3H cylinders they are designed to fit.

Load rated cylinder Alignment Aids include our new Dual Axis Knuckle that permits greater angular movement from the cylinder centerline as compared to Spherical Bearings, and at higher operating pressures. Other load rated Alignment Aids that can extend cylinder life and reduce operating costs include Rod Alignment Couplers, Split Flange Couplers and Weld Plates.

Traditional mounting accessories are available in both inch and metric sizes and cast iron or fabricated steel materials to fit our Series 2H, 2HD, 3H, 3HD, VH, 3L, 2A, RDH, RCL and HMI cylinders. Accessories can be selected to fit either the piston rod or cap end of cylinders.



Contact Information:

Parker Hannifin Corporation
Industrial Cylinder Division
500 South Wolf Road
Des Plaines, IL 60016

phone 847 298 2400
fax 800 892 1008
cylmktg@parker.com

www.parker.com/cylinder



Available Mounting Accessories:

Traditional Mounting Attachments

Available in Inch or Metric Sizes

- Rod Clevis
- Eye Bracket (cast iron or fabricated steel)
- Pivot Pin
- Knuckle
- Clevis Bracket (cast iron or fabricated steel)
- Spherical Bearing

Alignment Aids

- Dual Axis Knuckle – see reverse side for details
- Alignment Coupler
- Split Flange Coupler
- Weld Plate

Stainless Steel Attachments

- Rod Clevis
- Eye Bracket
- Pivot Pin
- Knuckle
- Clevis Bracket

For load ratings, dimensions and additional Mounting Accessory information see our Catalog HY08-1300.

ENGINEERING YOUR SUCCESS.

Dual Axis Knuckle

Using a Dual Axis Knuckle permits increased angular movement from the cylinder center line. Clevis or Eye mounted cylinders often require movement beyond the plane that two pivot pins allow. Spherical bearing mounts permit angular movement up to 4.5° within the pivoting plane. A Dual Axis Knuckle, with two pin holes 90° apart, installed at the cap and rod end of a mounting style BB cylinder adds two pivot points, thereby providing up to 30° movement in another plane at each end.

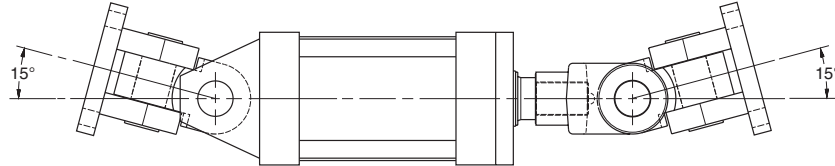
Dual Axis Knuckle Benefits

- Increased angular movement range compared to spherical bearing mount.
- Significantly higher dynamic load rating than spherical bearing mount.
- Reduced bearing loads and wear that results from misalignment.
- Allows faster assembly of pivoting cylinders to the machine.

Maximum Achievable Angular Movement from Cylinder Centerline*

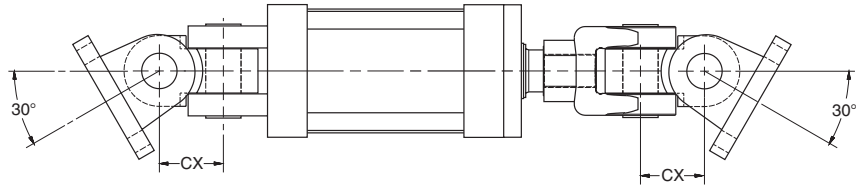
Inboard Pin -

15° maximum movement for cylinder misalignment only.



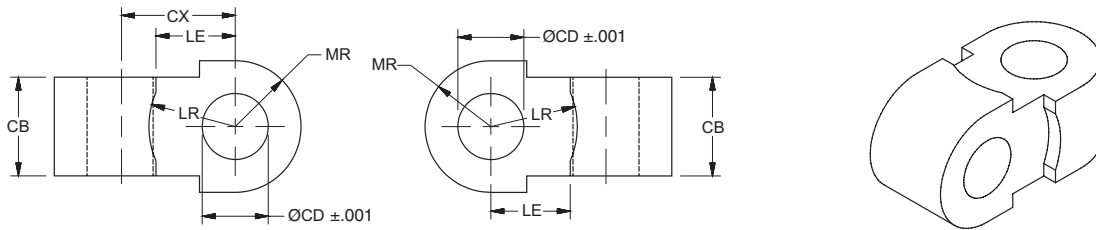
Outboard Pin -

30° maximum movement when applying force to a load moving in a curved plane.



*Maximum movement is achieved with cast clevis brackets. Movement is reduced when using fabricated clevis brackets.

Dual Axis Knuckle Dimensions and Usage



Part Number	Pin Ø	Load Capacity (lb)	CB	CD Ø	CX	LE	LR	MR	Mating Parts		BB Mount Usage by Series & Bore	
									Clevis Bracket	Rod Clevis	2A & 3L	2H
0952670000	0.500	4380	0.75	0.503	0.88	0.54	0.63	0.50	0960160050	0509400000, 0509410000	1.50, 2.00, 2.50	1.50
0952680000	0.750	12370	1.25	0.753	1.19	0.80	0.94	0.75	0960160075	0509420000, 1332840000	3.25, 4.00, 5.00	2.00, 2.50
0952690000	1.000	20500	1.50	1.003	1.69	1.05	1.22	1.00	0960160100	0509430000, 0509440000, 1332850000	6.00, 7.00, 8.00	3.25
0952700000	1.375	30500	2.00	1.378	2.38	1.44	1.69	1.38	0960160138	0509450000, 1332860000	10.00	4.00
0952710000	1.750	49500	2.50	1.753	3.06	1.81	2.19	1.75	0960160175	0509460000	12.00	5.00
0952720000	2.000	68000	2.50	2.003	3.63	2.09	2.44	2.00	0960160200	0509470000, 0509480000	14.00	6.00