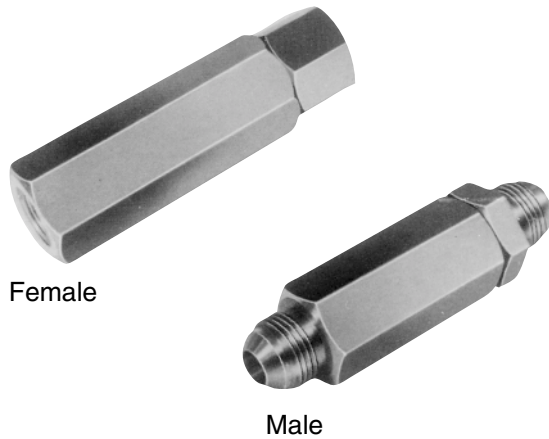


Series CLS Inline Check Valve and Series QLS Inline Throttle Valve



Effective: February 1, 2004
 Supersedes: Catalog No. GPA-3-150 dated 2/87
 Catalog No. GP-4007 dated 2/87

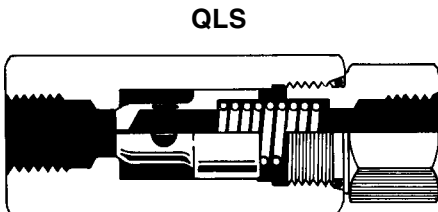
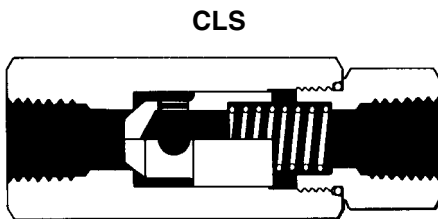
Features

- 3000 PSI (207 Bar)
- 1/4" to 1 1/2"

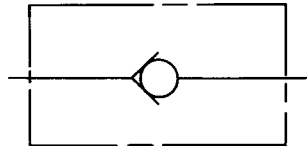
Description

The Parker Series CLS inline check valves are designed to provide free flow in one direction and a positive check in the opposite direction. They are available with a variety of port types and sizes and may be mounted in any position.

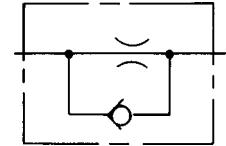
The Parker Series QLS inline throttle valves are designed to provide free flow in one direction and a restricted flow in the opposite direction. They are available with various orifice sizes. Throttle valves are used for improving control of hydraulic cylinders and motors.



CLS Symbol



QLS Symbol



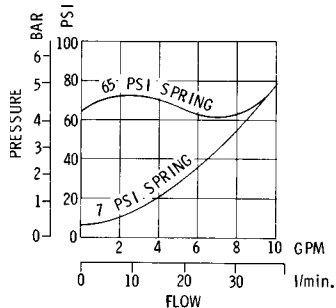
Specifications

Flow Rating Consult Pressure Drop Data
Operating Pressure (maximum) 3000 PSI [207 bar]
Temperature — Under normal conditions of continuous operation, fluid temperature should not exceed 180°F [82°C]. In no instance should the temperature exceed 200°F [93°C].
Fluid Recommendations — Premium grade hydraulic fluid with viscosity of 60 SUS [10 cSt] to 1000 SUS [216 cSt] at operating temperature.
Mounting Position Not restricted
Material All steel

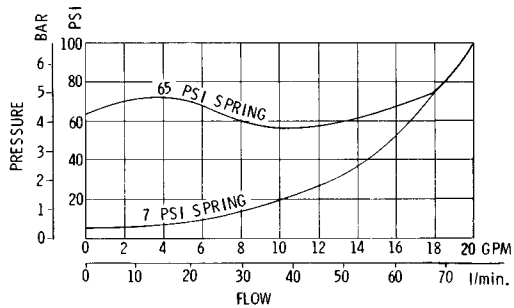
Weight (approx.)	
1/4"	0.50 lbs. [0,23 kg]
3/8"	0.63 lbs. [0,28 kg]
1/2"	1.00 lbs. [0,45 kg]
3/4"	2.88 lbs. [1,30 kg]
1"	2.88 lbs. [1,30 kg]
1 1/4"	5.88 lbs. [2,67 kg]
1 1/2"	5.90 lbs. [2,68 kg]
SAE 6	0.80 lbs. [0,36 kg]
SAE 8	1.00 lbs. [0,45 kg]
SAE 10	1.50 lbs. [0,68 kg]
SAE 12	2.80 lbs. [1,27 kg]
SAE 16	3.00 lbs. [1,36 kg]
SAE 20	6.00 lbs. [2,72 kg]

PRESSURE DROP DATA (typical)

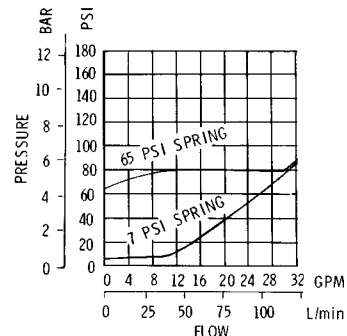
1/4"



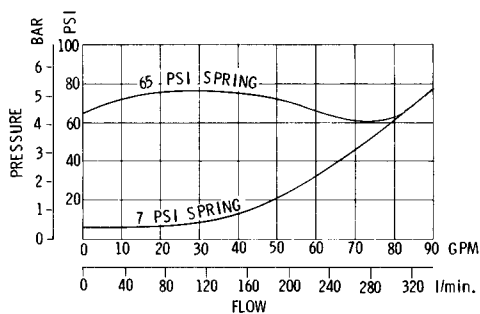
3/8"



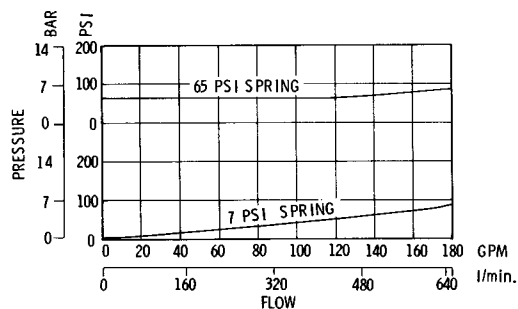
1/2"



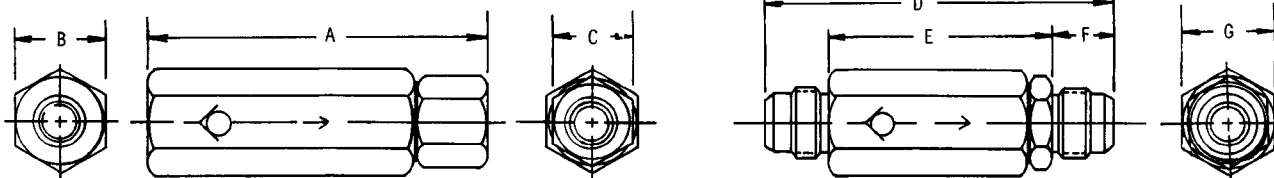
3/4" & 1"



1-1/4" & 1-1/2"



DIMENSIONS



VALVE SIZE NPT & FEMALE SAE	A	B	C
1/4" & SAE 6	3.30 (83.8)	0.88 (22.3)	0.75 (19.1)
3/8" & SAE 8	3.66 (92.9)	1.00 (25.4)	0.88 (22.3)
1/2" & SAE 10	4.50 (114.3)	1.38 (35.0)	1.25 (31.7)
3/4" & SAE 12	5.22 (132.6)	1.75 (44.4)	1.50 (38.1)
1" & SAE 16	5.75 (146.1)	1.75 (44.4)	1.75 (44.4)
1-1/4" & SAE 20	6.72 (170.7)	2.38 (60.4)	2.12 (53.8)
1-1/2"	7.00 (177.8)	2.38 (60.4)	2.12 (53.8)

VALVE SIZE MALE TUBE	D	E	F	G
SAE 6	3.27 (83.1)	2.15 (54.6)	0.56 (14.2)	0.88 (22.3)
SAE 8	3.78 (96.0)	2.48 (63.0)	0.65 (16.5)	1.00 (25.4)
SAE 10	4.61 (117.1)	3.11 (79.0)	0.75 (19.1)	1.38 (35.1)
SAE 12	5.30 (134.6)	3.58 (90.9)	0.86 (21.8)	1.75 (44.4)
SAE 16	5.36 (136.1)	3.54 (89.9)	0.91 (23.1)	1.75 (44.4)
SAE 20	6.30 (160.0)	4.40 (111.8)	0.95 (24.1)	2.38 (60.5)

INCHES
(MILLIMETRES)

ORDER CODE

CLS - 125 - 17F

CHECK

MODEL

PORT SIZE			
25	1/4" NPTF	06	SAE 6
38	3/8" NPT	08	SAE 8
50	1/2" NPT	10	SAE 10
75	3/4" NPT	12	SAE 12
100	1" NPT	16	SAE 16
125	1-1/4" NPT	20	SAE 20
150	1-1/2" NPT		

NOTE: NPT ports not available on Male type valves.

M	Male
F	Female

SPRING RATE	
7	7 PSI
65	65 PSI

PORT TYPE	
1	NPT
2	SAE

QLS - 125 - 1F25

FLOW CONTROL

MODEL

PORT SIZE			
25	1/4" NPTF	06	SAE 6
38	3/8" NPT	08	SAE 8
50	1/2" NPT	10	SAE 10
75	3/4" NPT	12	SAE 12
100	1" NPT	16	SAE 16
125	1-1/4" NPT	20	SAE 20
150	1-1/2" NPT		

NOTE: NPT ports not available on Male type valves.

ORIFICE SIZE	
3	1/32"
6	1/16"
12	1/8"
18	3/16"
25	1/4" (Not available for 1/4" or SAE 6 port sizes)
38	3/8" (Not available for 1/4", SAE 6, 3/8", SAE 8, 1/2" or SAE 10 port sizes)

M	Male
F	Female

PORT TYPE	
1	NPT
2	SAE

 **WARNING**

FAILURE OR IMPROPER SELECTION OR IMPROPER USE OF THE PRODUCTS AND/OR SYSTEMS DESCRIBED HEREIN OR RELATED ITEMS CAN CAUSE DEATH, PERSONAL INJURY AND PROPERTY DAMAGE.

This document and other information from Parker Hannifin Corporation, its subsidiaries and authorized distributors provide product and/or system options for further investigation by users having technical expertise. It is important that you analyze all aspects of your application and review the information concerning the product or system in the current product catalog. Due to the variety of operating conditions and applications for these products or systems, the user, through its own analysis and testing, is solely responsible for making the final selection of the products and systems and assuring that all performance, safety and warning requirements of the application are met.

The products described herein, including without limitation, product features, specifications, designs, availability and pricing, are subject to change by Parker Hannifin Corporation and its subsidiaries at any time without notice.

Offer of Sale

The items described in this document are hereby offered for sale by Parker Hannifin Corporation, its subsidiaries or its authorized distributors. This offer and its acceptance are governed by the provisions stated in the "Offer of Sale".

© Copyright 2004, Parker Hannifin Corporation, All Rights Reserved



Parker Hannifin Corporation
Hydraulic Valve Division
520 Ternes Ave.
Elyria, OH, 44035 USA
Tel: (440) 366-5200
Fax: (440) 366-5253
www.parker.com/hydraulicvalve

Bulletin HY14-3002/US,
3C, 3/04, PHD