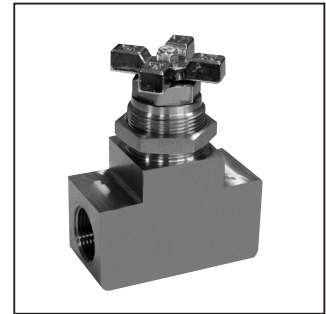
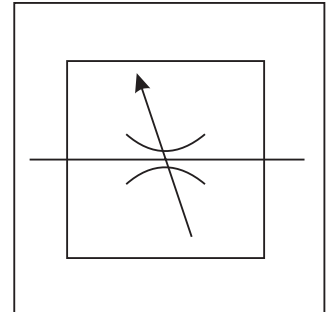
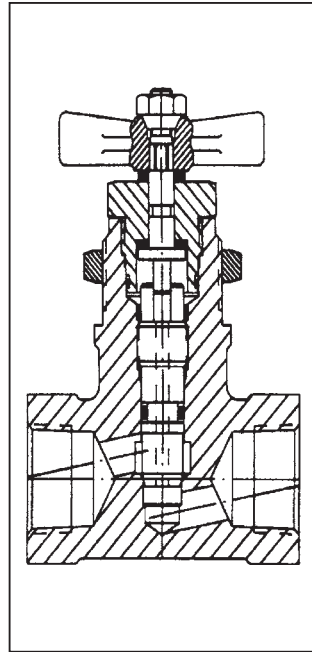


General Description

Series 154 needle valves meter flow on systems with pressures up to 690 Bar (10,000 PSI).

Specifications

Service App.	Water and Hydraulic Oil
Maximum Operating Pressure	Working: 690 Bar (10,000 PSI) Proof: 1035 Bar (15,000 PSI) Burst: 1725 Bar (25,000 PSI)
Sizes	Rising Stem type: IST: 4, 6, 8 Non-rising stem type: NPT: 1
Ports	NPT: Pipe threads IST: Internal straight threads (tube connection) AND10050 O-ring seal
Internal Leakage	Zero
Mounting	In-line or panel. Maximum panel thickness rising stem type 1/4"; Panel hole diameter 49/64". Non-rising stem type 3/4"; panel hole diameter 1-49/64"
Material	Body: 303 Stainless Steel Cap: 303 Stainless Steel Handle: 303 Stainless Steel Stem: 303 Stainless Steel Locknut: 303 Stainless Steel Packing Washer Follower: 303 Stainless Steel Stem: 440 Stainless Steel Stem Washers: Nylon O-rings: Synthetic Rubber Packing & Back-up rings: PTFE Handle: Aluminum alloy
Operating Temperature	Rising stem type: -54°C to 204°C (-65°F to 400°F) Non-rising stem type: -54°C to 107°C (-65°F to 225°F)



D

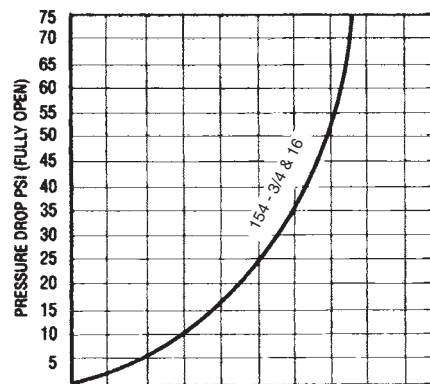
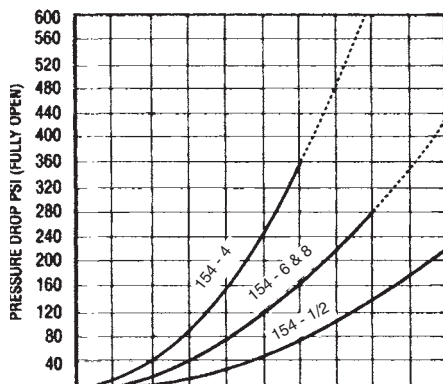
Features

- Forged stainless steel needle valve for 690 Bar (10,000 PSI) service.
- Pressure-balanced design and non-rising stem of 3/4" and 1" sizes greatly reduce torque requirements and increase packing life.

Size		CV Factor	Weight (Lbs.)
Tube	Pipe		
4	1/8	0.35	0.88
6	1/4	0.55	0.88
8	3/8	0.6	1.18

Performance Curves

**Media - Hydraulic Oil
 MIL-H-6083 @ 21°C - 32°C (70°F - 90°F)**



3000-D1.p65, dd



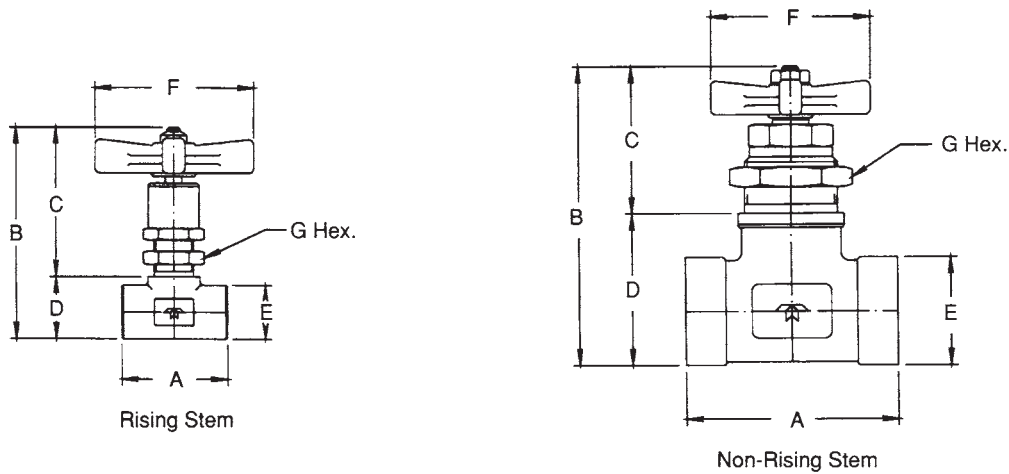
Ordering Information

154	-1	SS	2	P						
Catalog Number	Size and Type Ports	Materials	O-Ring Code	Panel Mounting (Optional)						
154 Inline Forged Stainless Steel	<table border="1"> <tr> <td>4 IST</td> <td>3/4 NPT</td> </tr> <tr> <td>6 IST</td> <td>1 NPT</td> </tr> <tr> <td>8 IST</td> <td></td> </tr> </table>	4 IST	3/4 NPT	6 IST	1 NPT	8 IST		SS Stainless Steel	2 Nitrile	
4 IST	3/4 NPT									
6 IST	1 NPT									
8 IST										

D

Dimensions

Shown in inches



Valve Size	A	B Closed	C Open	C Closed	D	E	F	G Hex
3/4, 1	4	5-7/16	2-11/16	2-11/16	1-13/16	1-7/8		2
4, 6	1-7/8	3-61/64	3-7/64	2-51/64	21/32	1	3	1
8	2-3/8	4-27/64	3-9/64	2-53/64	29/32	1-3/8	3	1

Phase Out