

General Description

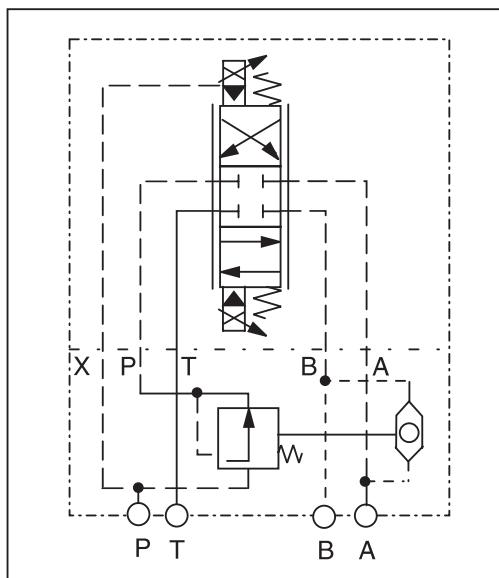
Series LCM 2-way pressure compensators are sandwich valves designed for stacking beneath a proportional directional control valve with a standardized mounting pattern.

B

The valve maintains a constant pressure differential between ports P and A or P and B across the directional valve. When the cross sectional opening of the directional valves is held steady, a constant flow rate is achieved, regardless of load fluctuations.

The control pressure applied to the spring side of the compensator spool is supplied from port A or B via a shuttle valve. Flow rate regulation is automatically effective in the port with the highest pressure.

Application Example



Proportional DC valve model D31FB with 2-way pressure compensator LCM3 maintains a constant flow rate. The diagram shows the design according to Code X

Specifications

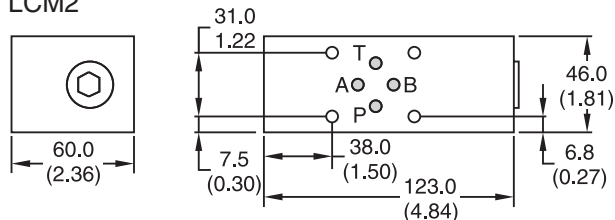
General		
Size	NG6	NG10
Mounting Position	NFPA D03 CETOP 3	NFPA D05 CETOP 5
Maximum Flow	20 LPM (5.28 GPM)	52 LPM (13.73 GPM)
Maximum Operating Pressure	350 Bar (5075 PSI)	
Pressure Differential	10 Bar (145 PSI)	

Ordering Information

<div style="border: 1px solid black; padding: 2px; width: 40px; margin: 0 auto;">LCM</div> <p>Pressure Compensator</p>	<div style="border: 1px solid black; width: 40px; height: 40px; margin: 0 auto;"></div> <p>Size</p>	<div style="border: 1px solid black; padding: 2px; width: 40px; margin: 0 auto;">PP</div> <p>Control Connection</p>	<div style="border: 1px solid black; width: 40px; height: 40px; margin: 0 auto;"></div> <p>Pilot Oil</p>	<div style="border: 1px solid black; padding: 2px; width: 40px; margin: 0 auto;">02</div> <p>Differential Pressure 10 Bar (14.5 PSI)</p>	<div style="border: 1px solid black; padding: 2px; width: 40px; margin: 0 auto;">V</div> <p>Seal Fluorocarbon</p>	<div style="border: 1px dashed black; width: 40px; height: 40px; margin: 0 auto;"></div> <p>Design Series</p> <p>NOTE: Not required when ordering.</p>											
<table border="1" style="width: 100%;"> <thead> <tr> <th>Code</th> <th>Description</th> </tr> </thead> <tbody> <tr> <td>2</td> <td>NG6</td> </tr> <tr> <td>3</td> <td>NG10</td> </tr> </tbody> </table>		Code	Description	2	NG6	3	NG10	<table border="1" style="width: 100%;"> <thead> <tr> <th>Code</th> <th>Description</th> </tr> </thead> <tbody> <tr> <td>Omit</td> <td>Internal</td> </tr> <tr> <td>X*</td> <td>External</td> </tr> </tbody> </table> <p>* NG10 only.</p>		Code	Description	Omit	Internal	X*	External	<p>Weight:</p> <p>LCM2 2.5 kg (5.5 lbs.) LCM3 3.1 kg (6.8 lbs.)</p>	
Code	Description																
2	NG6																
3	NG10																
Code	Description																
Omit	Internal																
X*	External																

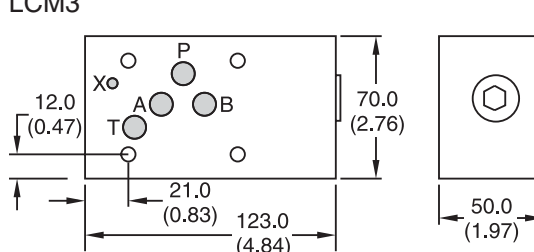
Dimensions — Inch equivalents for millimeter dimensions are shown in (**)

LCM2



Mounting Screws: BK403 (4) M5 x 90
 For mounting screws connected with directional valves D1 or 2-stage valves

LCM3



Mounting Screws: BK412 (4) M6 x 90
 The views show the mounting surface for the directional valve

LCM.indd, ddp