

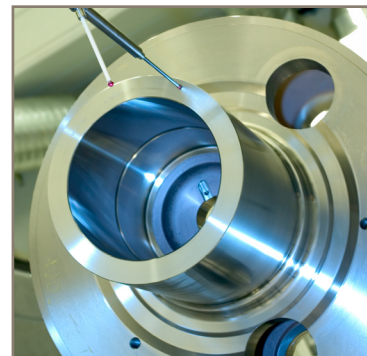


aerospace
climate control
electromechanical
filtration
fluid & gas handling
hydraulics
pneumatics
process control
sealing & shielding



On-Line Sensor Suite HMI

Real-time condition monitoring on critical plant



ENGINEERING YOUR SUCCESS.

A combination of the sensor range with display and logging capabilities, the 'Sensor Suite HMI' has been developed to offer real-time monitoring on critical applications such as Industrial Gearboxes and Gen Sets.

Able to provide more than 40 parameters in real time, the Sensor Suite HMI allows the operator to remotely monitor the evolution of any significant change in the lubricant. The full automation of this product eliminates any risk of sampling errors introduced by the operator. Data is displayed locally on a 6" HMI (Human Machine Interface) colour display and stored locally in Compact Flash Card (also accessible via Ethernet). Data can be also streamlined via ModBus over RS485 or via the major Network/protocols (on request).

Designed to be installed in any lubrication line using just two 1/2" BSPP ports, the suite reports metallic wear debris mass, oil condition, moisture and metallic ferrous / non-ferrous debris counts in the lubricant. Housed in a robust enclosure well suited for a wide range of applications, the product includes the Total Ferrous Debris Sensor, Moisture Sensor, Oil Condition Sensor and Metallic Wear Debris Sensor.

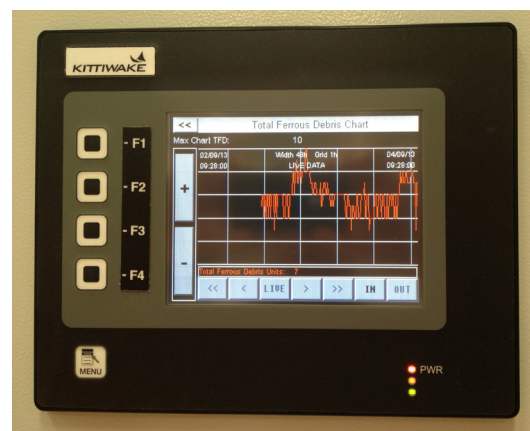


Specification

| | |
|--------------------------------|--|
| Power Input: | 115/240V AC 50/60 Hz |
| Power consumption: | 3 A max |
| Fuse Ratings and type: | Sensor Power: 5A 20mm quick blow |
| Port Connection : | 1/2" BSPP cone fitting |
| Fluid Compatibility: | Petroleum and synthetic oils. Compatible with most ester based oils. Do not use with water / oil emulsions |
| Maximum fluid viscosity | 350 cSt @40°C [104°F] |
| Max system fluid pressure: | 10 bar [145 psi] |
| Min Fluid Flow | 1.3 litre/min |
| Max Fluid Flow | 9 litre/min |
| Permitted Fluid temperatures : | 0 to 65°C [32 to 149°F] |
| Ambient operating temperature: | 0 to 65°C [32 to 149°F] |
| IP rating: | IP 65 |
| Weight: | 24.5kg [54 lb] |
| Detection | <ul style="list-style-type: none"> • 0-500 parts per million [ppm] Un-combined ferrous debris by weight • Oil Quality Units 1-100 Index Scale • 0-100% Relative Humidity • 0 to 100°C [32 – 212°F] Temperature • 10 x Fe Accumulator Bins sizes 40 to >1000 µm • 10 x non Fe Accumulator Bins sizes 135 to >1000 µm • 10 x Fe 'rate of Change' Bin/Minute. Sizes 40 to >1000 µm • 10 x nFe 'rate of Change' Bin/Minute sizes 135 to >1000 µm |

Ordering Information

| Product Code | Description |
|---|------------------|
| FG-K19401-KW | Sensor Suite HMI |
| Contact Parker Kittiwake for information about the wide range of installation accessories and alternative options that are available to suit your specific application. | |



Parker Kittiwake

Hydraulic Filter Division Europe
 3 - 6 Thorgate Road Littlehampton
 West Sussex BN17 7LU United Kingdom
 Tel: +44 (0)1903 731470
 Fax: +44 (0)1903 731480
 Email: kittiwakesales@parker.com
 Web: www.kittiwake.com

