

## PSM1000 APPLICATION INSTRUCTIONS

After the PSM1000 System has been installed, the PSM1000C Controller must be calibrated for the Spreader System in the vehicle.

Calibration controls are found in the rear of the PSM1000C. See below:

**MIN** Adjustment pot sets the minimum speed the function will operate at when the controller is set to position 1.

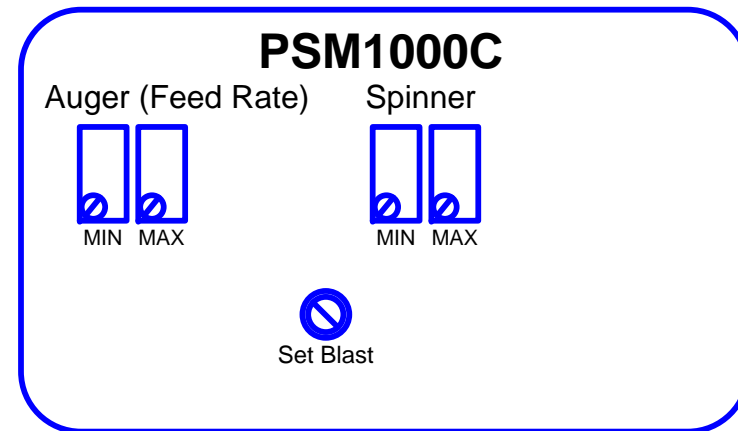
**Turn clockwise for a higher "I MIN" setting.**

**MAX** Adjustment pot sets the maximum speed the function will operate at when the controller is set to position 10.

**Turn clockwise for a higher "I MAX" setting**

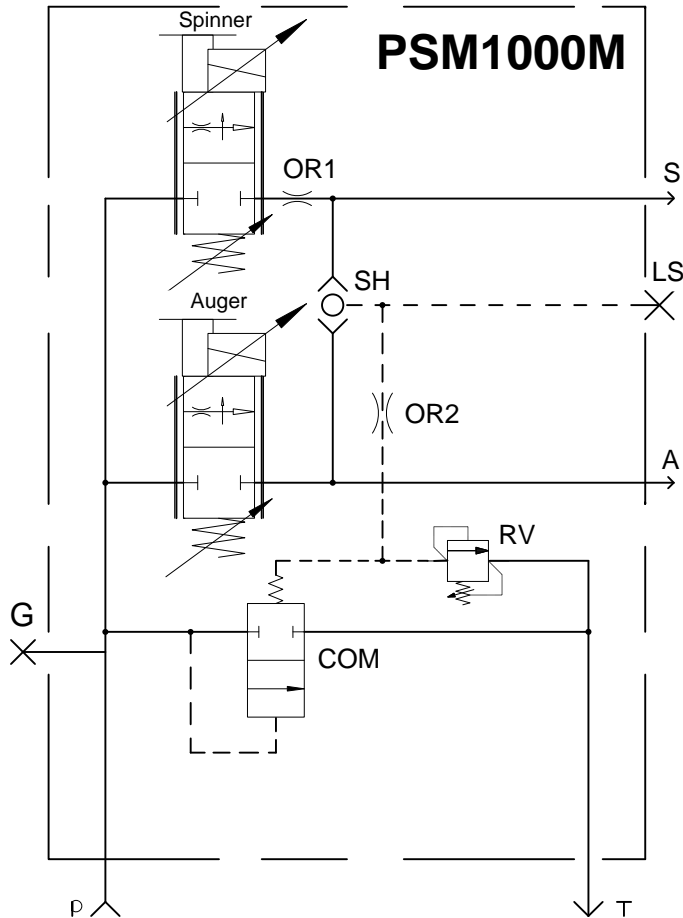
**Max current should not exceed 2.2 amps**

\*Adjustments should only be made with a small flat head screwdriver



**Set Blast** controls the current level sent to the Auger control in the "Blast" mode. Set this control for the desired feed rate in the "Blast" mode.

PARKER HANNIFIN CORPORATION		
INTEGRATED HYDRAULIC DIVISION LINCOLNSHIRE, ILLINOIS, USA		
TITLE PSM1000 Application Instructions		
Drawing Number:		PSM1000AI
Date	6/30/11	Rev D



### For Open Center Systems

- Designed for Fixed Displacement Pumps
- Power Beyond of Open Center Valve will be plumbed to "P" port of PSM1000M....L.S. port will remain plugged.....
- With series circuit, spool valves will have priority and interrupt flow to PSM1000M spreader requirements.....

### For Closed Center Systems with Load Sensing pumps

- Block "T" and connect the LS port to the Pump LS via a LS Shuttle valve, CS041B-A4T, when used in conjunction with any other LS control valve.