

PRODUCT FAMILY

Constant Frequency AC Large Frame Fuel Pump

Parker Aerospace, FSD-Elyria has a long history of supplying fuel pumps to the civilian and military aviation markets. Many civilian and military aircraft utilize 200 VAC (L-L), 400 Hz constant frequency power for the products in the fuel system. These pumps supply pressurized fuel from the main tank(s) directly to an engine (boost function) or to jettison fuel overboard. The product catalog covers numerous mounting arrangements from submerged (internal to the fuel tank) to in-line. Extensive qualification testing has been completed on these products. This past testing, combined with operational field experience means that these pumps can provide a low-risk, cost-effective solution for fuel systems utilizing 200 VAC (L-L), 400 Hz constant frequency power.



Model 9C126 family
Submerged mounting

Product Features

There are numerous fuel pumps available in the constant frequency AC – large frame pump family. An existing product can almost always be found that provides a proven solution for a new or retrofit application. Some of the key features that provide versatility are as follows:

Mounting configuration

- Single assembly, mounted internal to the aircraft fuel tank on the floor or walls
- Single assembly, mounted in-line (external to the fuel tank) for jettison function

Hydraulic elements

- Centrifugal impeller
- Gear stage for fuel priming on selected models

Motor drive

- Three phase, 400 Hz, induction motor designed for 200 volts (line-to-line) or 115 volts (line-to-neutral). Motors are designed to meet requirements of MIL-STD-704 and RTCA DO160.
- Motor is fuel cooled for long life
- Motors utilize non-resettable thermal fuses for locked rotor protection
- Motors utilize resettable thermal switches for dry run protection on selected models

Specifications

Attributes	Values
Flow range	0 to 94,000 pph
Discharge pressure range	12 to 50 psi
Required input range	2100 to 6300 volt-amps
Fluid temperature range	-65°F to +135°F
Ambient temperature range	-65°F to +160°F
Assembly weight	8 to 15 pounds
Duty cycle	Intermittent to continuous

Applications

Pumps from the constant frequency – large frame pump product family are used on the following aircraft:

- Boeing A-160
- Lockheed F-16
- Northrop F-18
- Sikorsky S-70, S-92, CH-148, H-92,UH-60

Optional Features

There are numerous pumps available within the product line family that each have unique features. Any specifications associated with a new application should be sent to Parker, and the best available option from the product catalog will be presented to the customer for consideration.

Contact Information

Parker Hannifin Corporation
Parker Aerospace
Fluid Systems Division
711 Taylor Street
Elyria, Ohio 44035
Phone: (440) 284-6300
Fax: (440) 322-6094
www.parker.com

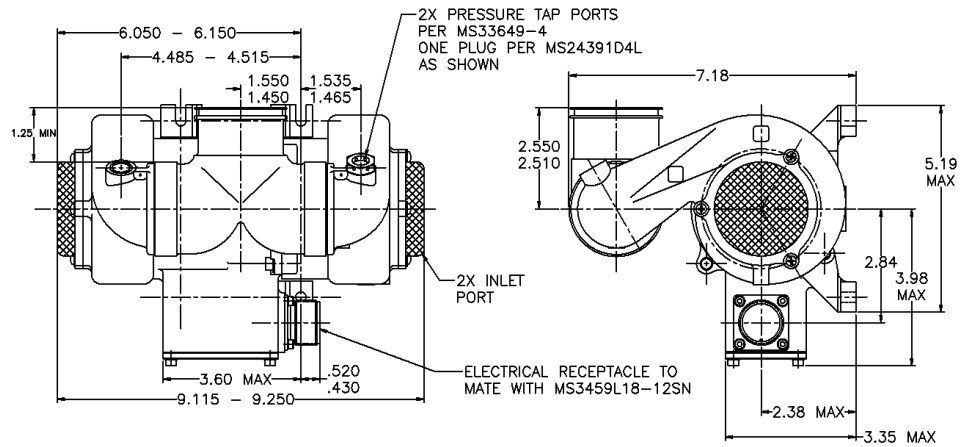
ENGINEERING YOUR SUCCESS.

PRODUCT FAMILY

Constant Frequency AC - Large Frame Fuel Pump

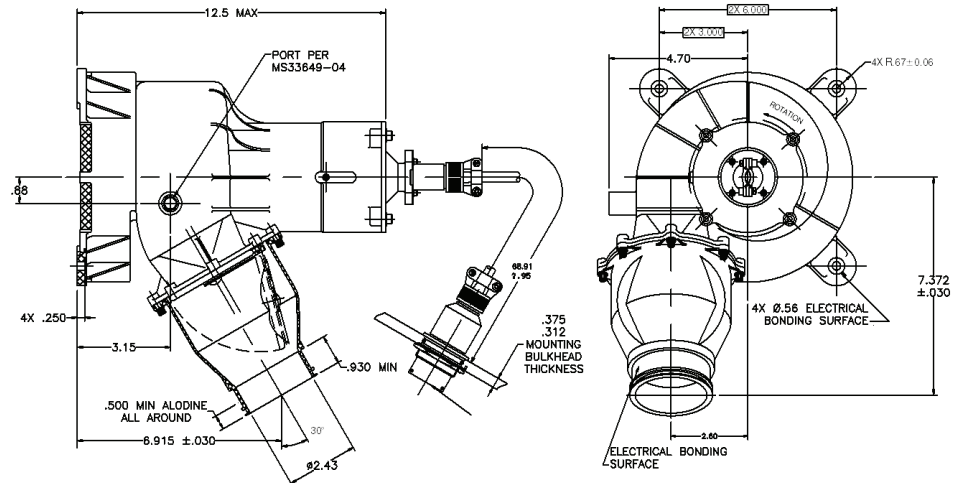
Model 9C126 family

Submerged mounting



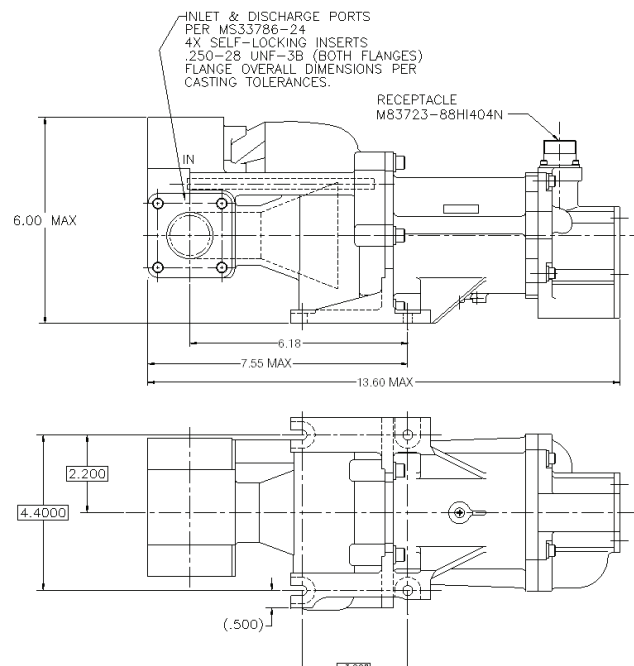
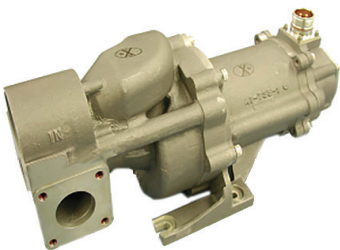
Model 9C124 family

Submerged mounting

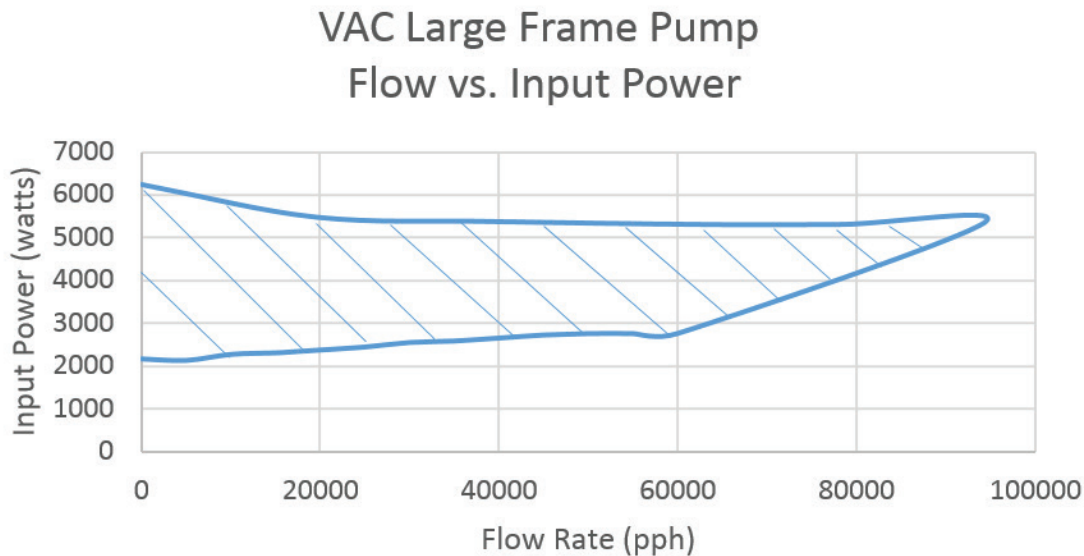
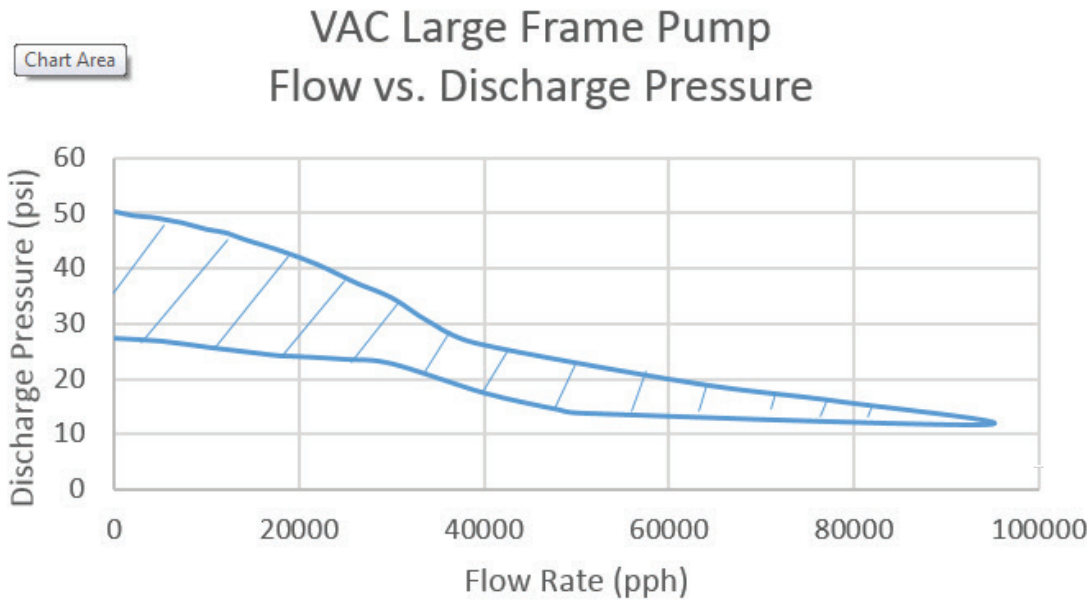


Model 9C115 family

In-line mounting



Product range curves for fuel flow versus discharge pressure and fuel flow versus input power



If the required flow, discharge pressure, and input power fit within the cross-hatched areas, then a product already exists that may fit the new application. Any pressure requirements below the cross-hatched region will also be satisfied.

Contact Information

Parker Hannifin Corporation
Parker Aerospace
Fluid Systems Division
711 Taylor Street
Elyria, Ohio 44035
Phone: (440) 322-6094
Fax: (440) 322-5625
www.parker.com