

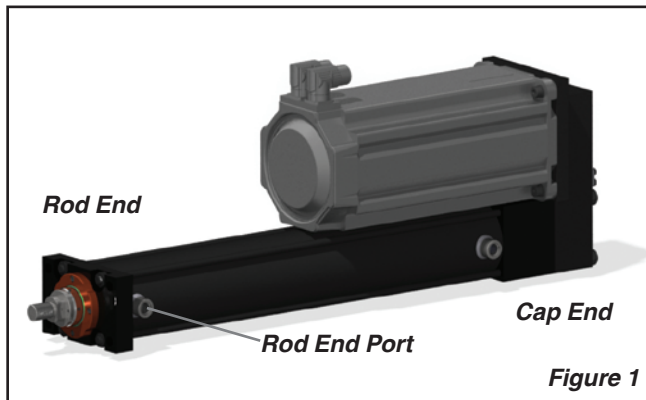


XFC Maintenance Instructions

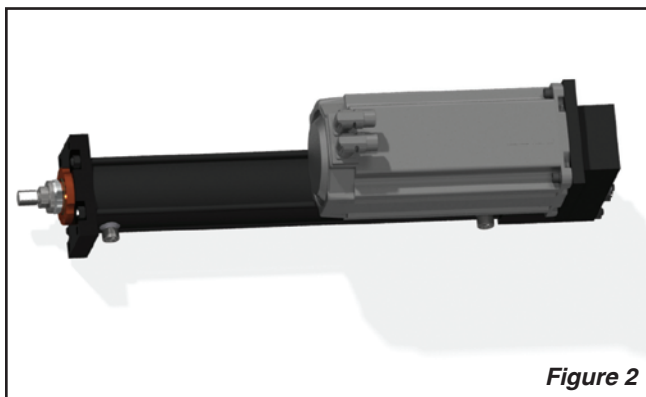
Oil-Filled Lubrication

Removing oil from XFC actuator:

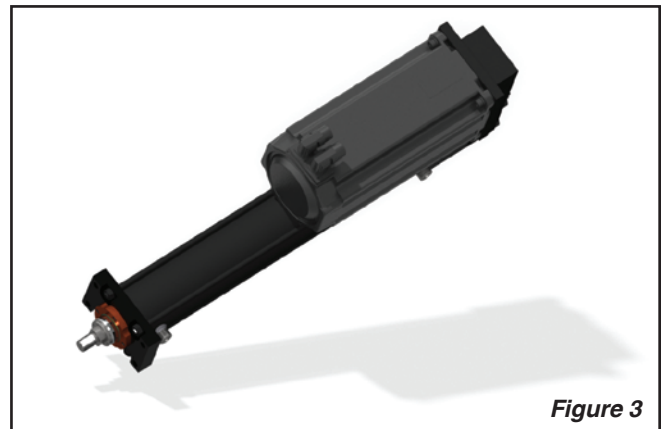
1. If possible, operate the actuator for approximately 10-15 minutes to warm up oil.
2. Stop actuator when rod position is within last 10% of fully retracted stroke. Take necessary precautions to remove potential electrical or mechanical energy prior to performing maintenance on machinery and/or actuator.
3. Remove the oil port plug from the rod end as displayed in Figure 1.



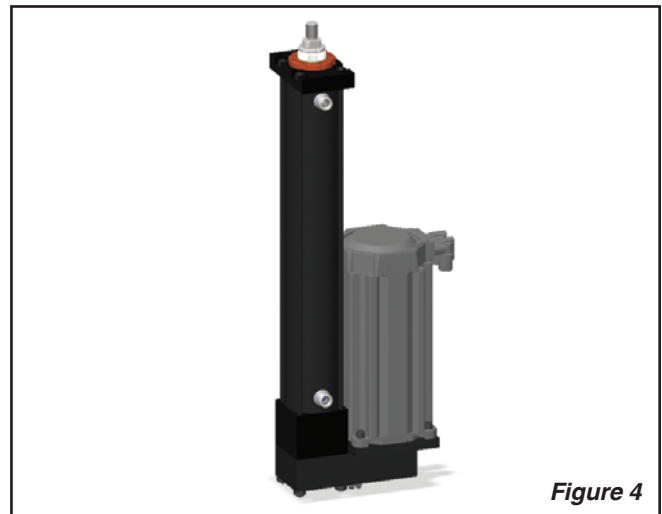
4. Turn actuator so that the oil port is pointing down and the oil will begin to run out of the actuator. (Figure 2) Collect oil and recycle according to local regulations.



5. Support the cap end of the actuator so the rod end is lower and the oil will flow toward the open oil port (Figure 3).



6. Once the oil flow has stopped or nearly stopped, orient the actuator so the rod is pointing up and leave in that position for 3 – 5 minutes (Figure 4).



7. Repeat steps 4 – 6, as required, to remove and collect the remaining oil. Recycle used oil according to local regulations.

Re-Filling oil into an XFC actuator:

1. Once the oil has been drained from the actuator, position the oil port to point up (Figure 5).

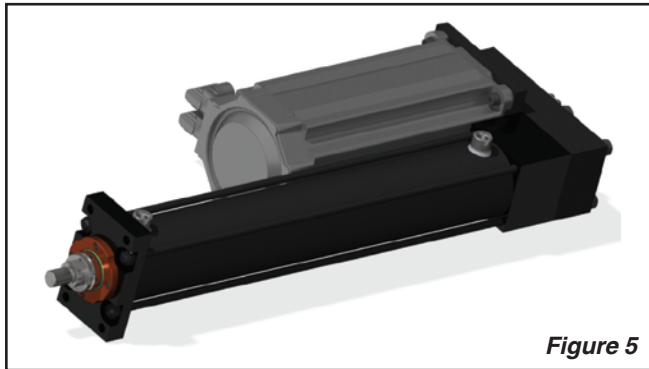


Figure 5

2. Fill the actuator with EP100 Chevron Gear Compound to the amount in the chart below. The total amount required will be the zero stroke volume plus the additional volume for each 25mm of stroke available from the actuator. The stroke length can be found in the model number.

| XFC Size | | | | | |
|---|-----|------|------|------|------|
| 75 | 90 | 115 | 140 | 165 | 190 |
| Zero Stroke Oil Volume (fluid ounces) | | | | | |
| 3.7 | 5.6 | 10.1 | 27.4 | 32.7 | 48.9 |
| Additional Volume per 25mm (fluid ounces) | | | | | |
| 1.0 | 1.7 | 2.6 | 4.1 | 5.7 | 7.5 |

3. Replace oil port plug and tighten.
4. Operate actuator at slow speeds to distribute oil evenly throughout the actuator for 10 complete cycles through the full stroke range.

Lubrication Intervals:

For standard duty applications, oil should be replaced every 25 million millimeters of travel or once per year, whichever comes first.

XFC Model Code Example:

XFC075LA10JNAAN0100-A03-A09AA1-A

Stroke in mm

Grease Lubrication

Standard XFC actuators with grease lubrication are specified with lower duty cycles and are pre-lubricated at the factory for the rated life of the actuator. The XFC actuator can be returned to the Parker manufacturing location for inspection and re-lubrication as required. Follow the repair process for this request.

Repair

If the unit is in need of repair, the unit must be returned to the Parker Cylinder Division to ensure proper assembly, inspection and repair. Contact Parker Cylinder at the information below to coordinate the return process.

Parker Cylinder Division
 500 S. Wolf Rd
 Des Plaines, IL 60016 USA
 847-298-2400

<http://www.parker.com/cylinder/xfc>