

IQ 200

Continuous on-line laser particle counter

The IQ200 particle counter is specifically designed to provide continuous, on-line monitoring of the particulate contamination level of hydraulic and lubrication fluids.

The small, compact IQ200 can connect to virtually any system to give the user real-time data from every 3 seconds to 24 hours. The data is easily transferred and organized to a laptop computer or PC station using the supplied software. All of this for about 1/2 the price of traditional portable particle counters.



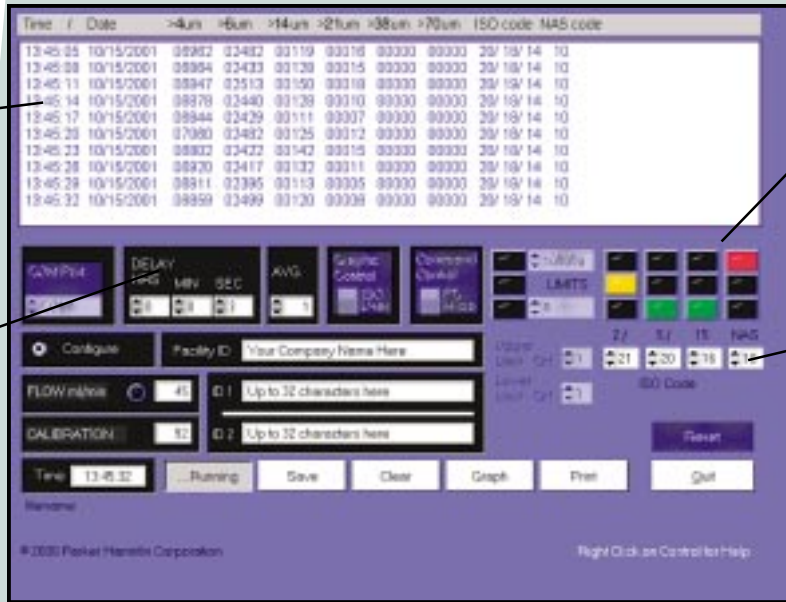
- Remote and multiple system monitoring from one location.
- Completely automatic.
- Laser accuracy and repeatability.
- Programmable test intervals from 3 seconds to 24 hours.
- Adjustable contamination level alarms.
- Integral flow and calibration check.
- ISO 4406-1999 reporting format (4, 6, 14 micron) and correlation to NAS 1638.
- User friendly Windows-based software.
- Data displayed instantly in chronological or graphic form.



Output data

Real time
fluid condition
report

User
defined
sample
intervals



ISO/NAS
alarms

ISO/NAS
alarm setting

Real time particle
count graphing
with programmable
alarms



Specifications

Pressure

3000psi (207 bar) maximum operating. Minimum pressure required depends on fluid viscosity, connections, and length of hose assemblies

Operating temperature

Maximum: 165°F(74°C)
Minimum: 32°F(0°C)

Flow thru sensor cell

Maximum allowed for accuracy: 60 ml/min
Minimum required for accuracy: 40 ml/min

Viscosity range

20-430 cSt (100-2000 SUS)

Inlet/outlet port connections

SAE-4 straight thread female

Particle size range

4+, 6+, 14+, 21+, 38+, 70+ microns

Output

RS-232/485 with 6 channels of particle counts and flow rate, 1/2" - 20 UNF (BH-5 pin)

Power

12-24 VDC, 1/2" - 20 UNF (BH-4 pin)

Materials

Wetted: anodized aluminum. Viton seals. Display cover: ABS thermoplastic

Interface software (included)

Windows based data acquisition (LABWINDOWS CVI)

Size and weight

6⁷/₈"D x 6⁹/₁₆"W 5⁵/₈"H / 12 lbs.

Ordering Information

PART #	DESCRIPTION
935372	IQ200, compatible with mineral oils and petroleum based fluids. Calibrated in accordance to ISO 4402 (2, 5, 15 format).
936493	IQ200E, compatible with Skydrol/phosphate ester fluids. Calibrated in accordance to ISO 4402 (2, 5, 15 format).
936494	IQ200M, compatible with mineral oils and petroleum based fluids. Calibrated in accordance to ISO 11171 (4 _(c) , 6 _(c) , 14 _(c) format).
936495	IQ200EM, compatible with Skydrol/phosphate ester fluids. Calibrated in accordance to ISO 11171 (4 _(c) , 6 _(c) , 14 _(c) format).