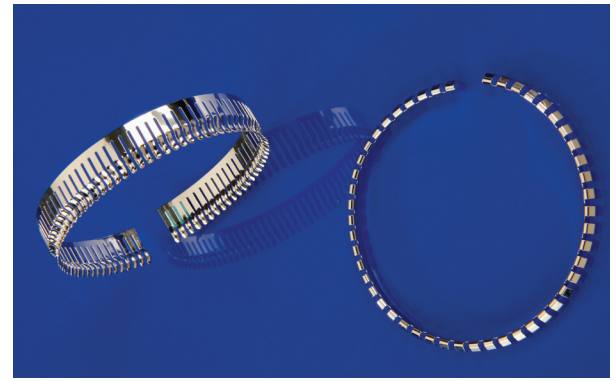
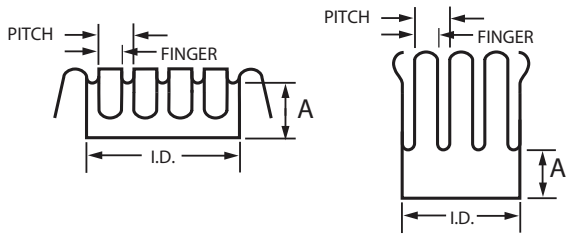


# SPRING-LINE Contact Rings

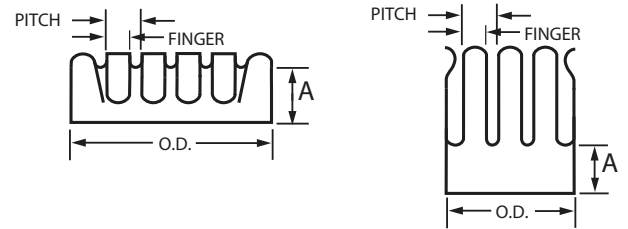
Parker Chomerics Contact rings are available in any inner diameter (I.D.) for male ring configurations. Female ring configurations are available in any outer diameter (O.D.) greater than the minimum O.D. shown. Rings must contain an integral number of full fingers. Additional plating options upon request.



## MALE RINGS



## FEMALE RINGS



See Table Below for Dimensions

### Part Numbering System

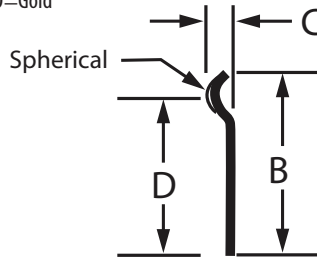
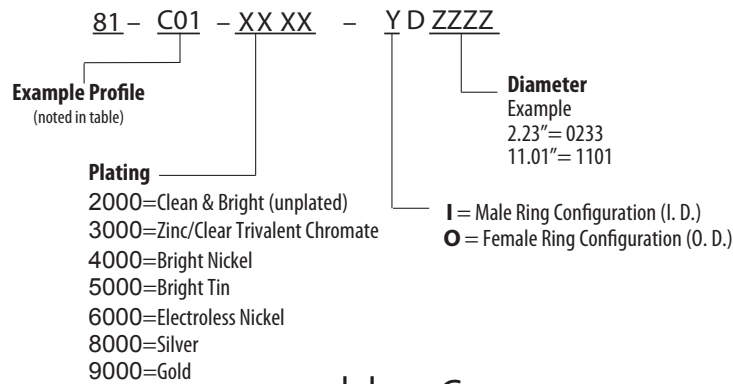


Table 1: CONTACT RINGS inches (mm)

Chomerics P/N	Finger	Pitch	A	B	C	D	Minimum O.D. (Female Rings)	Material Thickness
81-C01-XXXX-YDZZZZ	0.040 [1.02]	0.060 [1.52]	0.12 [3.05]	0.34 [8.64]	0.04 [1.02]	0.30* [7.62]	0.173 [4.39]	0.004 [0.102]
81-C02-XXXX-YDZZZZ	0.050 [1.27]	0.075 [1.91]	0.06 [1.52]	0.38 [9.65]	0.05 [1.27]	0.31* [7.87]	0.197 [5.00]	0.006 [0.152]
81-C03-XXXX-YDZZZZ	0.050 [1.27]	0.075 [1.91]	0.22 [5.59]	0.53 [13.46]	0.05 [1.27]	0.47* [11.94]	0.197 [5.00]	0.006 [0.152]
81-C04-XXXX-YDZZZZ	0.140 [3.56]	0.187 [4.75]	0.50 [12.7]	0.75 [19.05]	0.12 [3.05]	0.65* [16.51]	0.900 [22.86]	0.005 [0.127]

\*reference only dimensions

## SPRING-LINE Contact Rings - Information

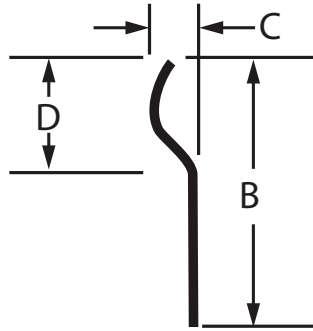


Table 2: CONTACT RINGS inches (mm)

Chomerics P/N	Finger	Pitch	A	B	C	D	Minimum O.D. (Female Rings)	Material Thickness
81-C05-XXXX-YDZZZZ	0.140 (3.56)	0.187 (4.75)	0.65* (16.51)	0.89 (22.61)	0.09 (2.29)	0.27 (6.86)	0.007 (17.78)	0.005 (0.127)
81-C06-XXXX-YDZZZZ	0.140 (3.56)	0.187 (4.75)	0.65* (16.51)	0.89 (22.61)	0.12 (3.05)	0.30 (7.62)	0.007 (17.78)	0.005 (0.127)

\*reference only dimensions

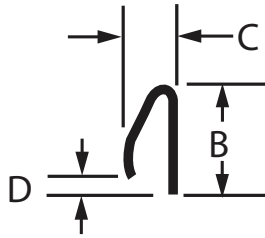


Table 3 : CONTACT RINGS inches (mm)

Chomerics P/N	Finger	Pitch	A	B	C	D	Minimum O.D. (Female Rings)	Material Thickness
81-C07-XXXX-YDZZZZ	0.040 (1.02)	0.060 (1.52)	0.13* (3.30)	0.13 (3.30)	0.07 (1.78)	0.03 (0.76)	0.630 (16.00)	0.004 (0.102)
81-C08-XXXX-YDZZZZ	0.077 (1.96)	0.127 (3.23)	0.09* (2.29)	0.13 (3.30)	0.09 (2.29)	0.03 (0.76)	0.649 (16.48)	0.005 (0.127)
81-C09-XXXX-YDZZZZ	0.091 (2.31)	0.134 (3.40)	0.23* (5.84)	0.28 (7.11)	0.13 (3.30)	0.03 (0.76)	0.700 (17.78)	0.010 (0.254)
81-C10-XXXX-YDZZZZ	0.109 (2.77)	0.145 (3.68)	0.23* (5.84)	0.28 (7.11)	0.13 (3.30)	0.03 (0.76)	-	0.010 (0.254)
81-C11-XXXX-YDZZZZ	0.091 (2.31)	0.134 (3.40)	0.23* (5.84)	0.28 (7.11)	0.20 (5.08)	0.09 (2.29)	-	0.010 (0.254)
81-C11-XXXX-YDZZZZSF	0.091 (2.31)	0.134 (3.40)	0.23* (5.84)	0.28 (7.11)	0.20 (5.08)	0.09 (2.29)	-	0.005 (0.127)
81-C12-XXXX-YDZZZZ	0.125 (3.18)	0.187 (4.75)	0.38* (9.65)	0.48 (12.19)	0.28 (7.11)	0.13 (3.30)	-	0.006 (0.152)
81-C13-XXXX-YDZZZZ	0.087 (2.21)	0.134 (3.40)	0.50* (12.70)	0.63 (16.00)	0.44 (11.18)	0.22 (5.59)	-	0.010 (0.254)

\*reference only dimensions

## SPRING-LINE Contact Rings - Information

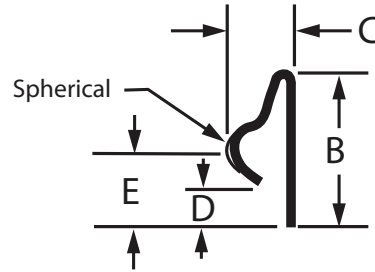


Table 4 : CONTACT RINGS inches (mm)

Chomerics P/N	Finger	Pitch	A	B	C	D	E	Minimum O.D. (Female Rings)	Material Thickness
81-C14-XXXX-YDZZZZ	0.040 (1.02)	0.060 (1.52)	0.13* (3.30)	0.19 (4.83)	0.09 (2.29)	0.03 (0.76)	0.10* (2.54)	0.500 (12.70)	0.004 (0.102)
81-C15-XXXX-YDZZZZ	0.050 (1.27)	0.075 (1.94)	0.20* (5.08)	0.26 (6.60)	0.11 (2.79)	0.03 (0.76)	0.10* (2.54)	0.630 (16.00)	0.006 (0.152)
81-C16-XXXX-YDZZZZ	0.062 (1.57)	0.093 (2.36)	0.31* (7.87)	0.44 (11.18)	0.16 (4.06)	0.12 (3.05)	0.23* (5.84)	0.975 (24.77)	0.010 (0.254)

\*reference only dimensions

All dimensions are nominal. For applications where tolerances are critical, contact Parker Chomerics Applications Engineering Department.

Additional profiles are available. Request information.