

aerospace
climate control
electromechanical
filtration
fluid & gas handling
hydraulics
pneumatics
process control
sealing & shielding



Directional Control & Sandwich Valves

NFPA D03 & D05

►► *Hydraulic*
Express Program



ENGINEERING YOUR SUCCESS.

Together, we can deliver...

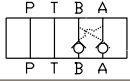
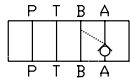
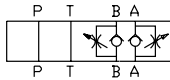
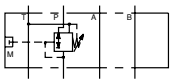
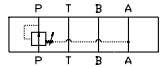
- Quick Turnaround - Core products delivered from stock, Common configurations offered
- Conversions of non-core products delivered in 7 days or less
- NFPA D03 & D05 Directional Control Valves CSA certified
- Sandwich Valves are mounted between directional control valves and their mounting surfaces.
- NFPA D03 Sandwich Valves may also be used with Parker's Cartpak series
- Quantity based pricing applies to this program
- Combine D1VW, D3W and Sandwich valves to achieve maximum discounting as outlined on your discount schedule for product 0066C

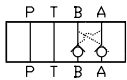

Directional Control Valves

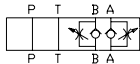

Core Products		Style and Spools	Seals	Solenoid Voltage		DIN Connection	Conduit Box Connection (Plug-in- Style)
NFPA D03	NFPA D05		Nitrile	24 VDC	120/60 VAC		
D1VW001CNJW4	D3W1CNJW4		X	X		X	
D1VW001CNYW4	D3W1CNYW4		X		X	X	
D1VW001CNJG45	D3W1CNJK4		X	X			X
D1VW001CNYG45	D3W1CNYK4		X		X		X
D1VW002CNJW4	D3W2CNYW4		X	X		X	
D1VW002CNYW4	D3W2CNYW4		X		X	X	
D1VW002CNJG45	D3W2CNJK4		X	X			X
D1VW002CNYG45	D3W2CNYK4		X		X		X
D1VW004CNJW4	D3W4CNJW4		X	X		X	
D1VW004CNYW4	D3W4CNYW4		X		X	X	
D1VW004CNJG45	D3W4CNJK4		X	X			X
D1VW004CNYG45	D3W4CNYK4		X		X		X
D1VW008CNJW4	D3W8CNJW4		X	X		X	
D1VW008CNYW4	D3W8CNYW4		X		X	X	
D1VW008CNJG45	D3W8CNJK4		X	X			X
D1VW008CNYG45	D3W8CNYK4		X		X		X
D1VW020BNJW4	D3W20BNJW4		X	X		X	
D1VW020BNYW4	D3W20BNYW4		X		X	X	
D1VW020BNJG45	D3W20BNJK4		X	X			X
D1VW020BNYG45	D3W20BNYK4		X		X		X
D1VW020DNJW4	D3W20DNJW4		X	X		X	
D1VW020DNYW4	D3W20DNYW4		X		X	X	
D1VW020DNJG45	D3W20DNJK4		X	X			X
D1VW020DNYG45	D3W20DNYK4		X		X		X

Manufactured and assembled in North America.

Sandwich Valves

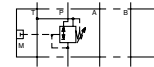
Core Products	Style	Size	Seals		Adjustment		
			Nitrile	Fluorocarbon	Allen Hex	Knob	
CPOM - Pilot Operated Check Valve							
CPOM2DDN		NFPA D03	X				
CPOM3DDV		NFPA D05		X			
CPOM2AAN		NFPA D03	X				
CPOM3AAV		NFPA D05		X			
FM - Flow Control Valve							
FM2DDKN		NFPA D03	X			X	
FM2DDSN		NFPA D03	X		X		
FM3DDKV		NFPA D05		X		X	
PRDM - Pressure Reducing Relieving Valve							
PRDM2PP16SNS		NFPA D03	X		X		
PRDM2PP21SNS		NFPA D03	X		X		
PRM - Pressure Reducing Valve							
PRM3PP25KVS		NFPA D05		X		X	

CPOM - Pilot Operated Check Valve				
BOX 1	BOX 2	BOX 3	BOX 4	BOX 5
CPOM	2	DD		N
BOX 1 : Model Symbol Description CPOM Pilot Operated Check Valve		BOX 4 : Cracking Pressure Symbol Description Omit** 5 PSI Y* 45 PSI Z* 75 PSI * Available in size 2 only ** 15 PSI on CPOM2		
BOX 2 : Size Symbol Description 2 NFPA D03 Subplate Mounting 3 NFPA D05 Subplate Mounting 6 NFPA D08 Subplate Mounting		BOX 5 : Seal Symbol Description N Nitrile V Fluorocarbon		
BOX 3 : Poppet Style Symbol Description DD Double Poppet A and B Port AA A Port Only BB B Port Only				

FM - Flow Control Valve							
BOX 1	BOX 2	BOX 3	BOX 4	BOX 5	BOX 6		
FM	2	DD		S	N		
BOX 1 : Model Symbol Description FM Flow Control Valve		BOX 4 : Needles Symbol Description Omit Standard D Fine Meter		BOX 5 : Adjustment Symbol Description S Allen Hex K Knob			
BOX 2 : Size Symbol Description 2 NFPA D03 Subplate Mounting 3 NFPA D05 Subplate Mounting 6 NFPA D08 Subplate Mounting		BOX 6 : Seal Symbol Description N Nitrile V Fluorocarbon					
BOX 3 : Meter Option Symbol Description AA Single Function A Port Only BB Single Function B Port Only DD A and B Ports Dual Function PP** Single Function P Port							

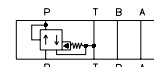
* **Note:** Options in **BOLD** apply to Express Program

PRDM - Pressure Reducing Relieving Valve



BOX 1	BOX 2	BOX 3	BOX 4	BOX 5	BOX 6	BOX 7
PRDM	2	PP	16	S	N	S
BOX 1 : Model		BOX 4 : Pressure Range		BOX 5 : Adjustment		
Symbol	Description	Symbol	Description	Symbol	Description	
PRDM	Pressure Reducing Relieving	01	1 to 14 Bar 15 to 200 PSI	L	Hex w/Key Lock	
BOX 2 : Size				BOX 6 : Seals		
Symbol	Description	02*	1.5 to 25 22 to 363 PSI	S	Internal Hex Screw Adjustable	
2	NFPA D03 Subplate Mounting	05**	2 to 50 29 to 725 PSI	K	Knob	
3	NFPA D05 Subplate Mounting	06*	1.5 to 64 22 to 928 PSI	BOX 7 : Gauge Port		
BOX 3 : Port Reduction				Symbol Description		
Symbol	Description	10**	4 to 100 58 to 1450 PSI	N	Nitrile	
PP	P Port Only	15**	6 to 150 87 to 2175 PSI	V	Fluorocarbon	
AA	A Port Only	16*	3 to 160 44 to 2320 PSI	BOX 7 : Gauge Port		
BB	B Port Only	21	8 to 210 116 to 3045 PSI	S	SAE #4 (UNF-2B 7/16-20) Adapter in PRDM3	
		35*	10 to 315 147 to 4560 PSI	M	Metric	
		* PRDM2 Only		G	1/4" BSPP	
		** PRDM3 Only				

PRM - Pressure Reducing Valve



BOX 1	BOX 2	BOX 3	BOX 4	BOX 5	BOX 6	BOX 7	BOX 8
PRM	3	PP	25	K	N	S	
BOX 1 : Model		BOX 4 : Pressure Range		BOX 6 : Seals			
Symbol	Description	Symbol	Description	Symbol	Description		
PRM	Pressure Reducing Valve	*07	10 to 70 Bar 150 to 1000 PSI	N	Nitrile		
BOX 2 : Size				BOX 7 : Gauge Port			
Symbol	Description	17	10 to 175 150 to 2500 PSI	S+	SAE		
3	NFPA D05 Subplate Mounting	25	10 to 250 150 to 3500 PSI	N+	NPT		
6	NFPA D08 Subplate Mounting	35	10 to 345 150 to 5000 PSI	M+	Metric		
BOX 3 : Port Reduction		BOX 5 : Adjustment		BOX 7 : Gauge Port			
Symbol	Description	Symbol	Description	G	1/4" BSPP		
PP	P Port Only	K	Knob	BOX 7 : Gauge Port			
AA	A Port Only	L*	Locking Knob	Omit*	SAE		
BB	B Port Only	S	Screw Adjustable	N+	NPT		
		* PRM6 Only		M+	Metric		
PA	P Port Reduced/ Convertible to A Port Reduced			G	1/4" BSPP		
AP	A Port Reduced/ Convertible to P Port Reduced			BOX 7 : Gauge Port			
				* PRM6 Only			
				+ PRM3 Only			
				BOX 8 : Drain			
				Symbol Description			
				Omit	Internal		
				Y	External		

* **Note:** Options in **BOLD** apply to Express Program

(Restricted for use by Parker Hannifin Personnel and Authorized Distributors) © 2015 Parker Hannifin Corporation



Parker Canada Division
 Milton (905) 693-3000
 Montreal (514) 684-3000
 Calgary (403) 291-9284

pcdmktg@parker.com

Parker Policy WI-MK076
 Confidential
 Effective Date: June 1, 2015
 Issue Date: June 1, 2015
 Supersedes: July 11, 2014

www.parker.com/canada/HydValves