



10P-0005 IO Card

To be used with AC10P Series Inverter

Product Manual

Issue 1

(ENGLISH VERSION)

2016 Parker Hannifin Manufacturing Ltd.

All rights strictly reserved. No part of this document may be stored in a retrieval system, or transmitted in any form or by any means to persons not employed by a Parker SSD Drives company without written permission from Parker Automation Wuxi, a division of Parker Hannifin Ltd . Although every effort has been taken to ensure the accuracy of this document it may be necessary, without notice, to make amendments or correct omissions. Parker Automation Wuxi cannot accept responsibility for damage, injury, or expenses resulting therefrom.

WARRANTY

Refer to Parker Hannifin Manufacturing Limited Terms and Conditions of Sale. These documents are available on request at www.parker.com/ADC. Parker Hannifin Manufacturing Limited reserves the right to change the content and product specification without notice.

I. Model and specification

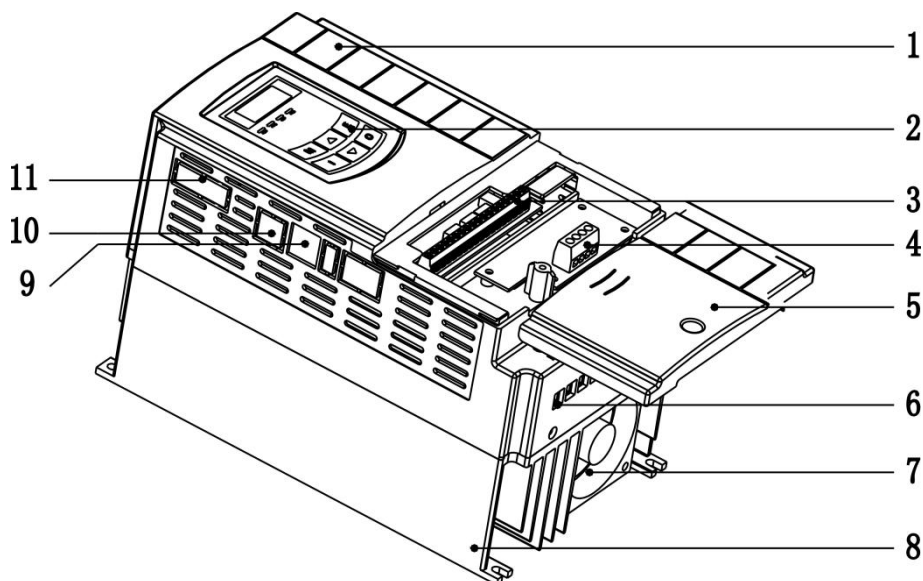
1.1 Model

Model	Function
10P-0005	4 terminals for DI input, and 2 terminals for relay output

1.2 Specification

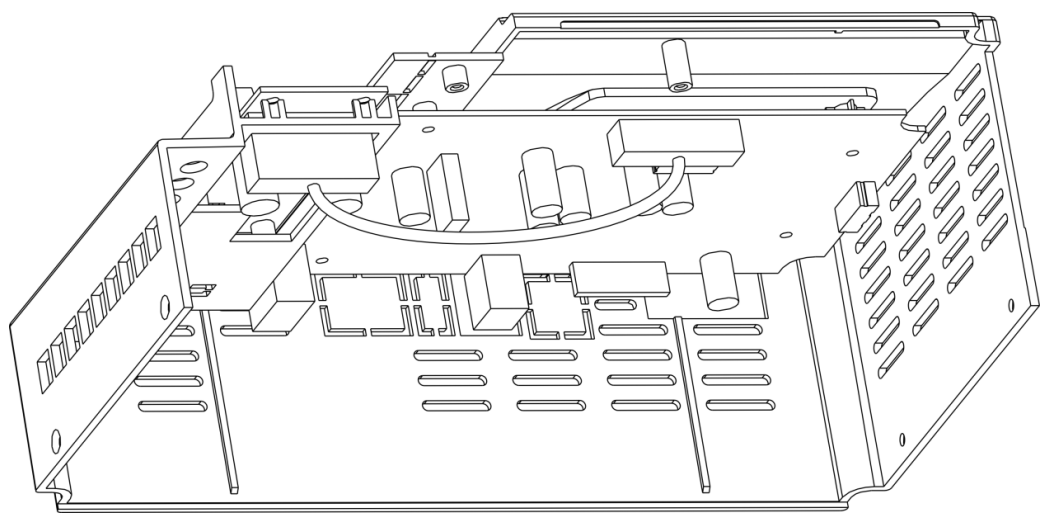
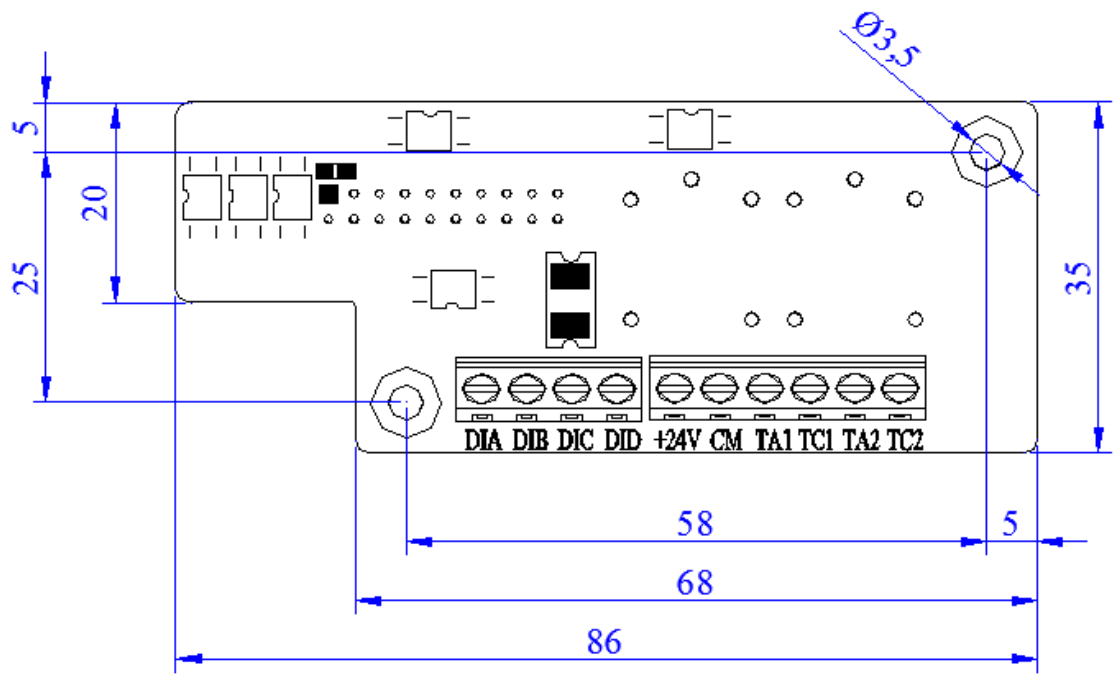
	Function	Response speed	Output resistance	Voltage range	Output current	Frequency-division range
DIA~DID	4 terminals for digital input	---	---	0~24V	---	---
TA1/TC1, TA2/TC2	2 terminals for relay normal-open contact	---	---	---	12A/125VAC 7A/250VAC 7A/30VDC	---
+24V, CM	DIA~DID power	---	---	24±1.5V	50mA	---

1.3 Dimension and installation

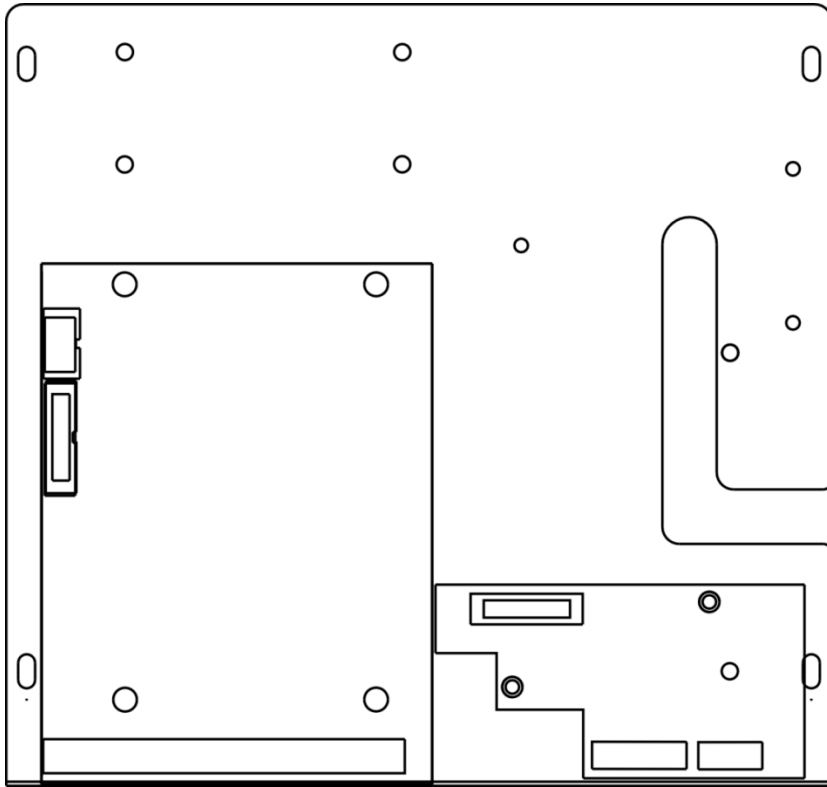


1	Cover	7	Fan
2	keypad	8	heatsink
3	Control terminals	9	Modbus interface
4	PG card	10	Remote keypad interface
5	Removable cover	11	Communication interface
6	Power terminals		

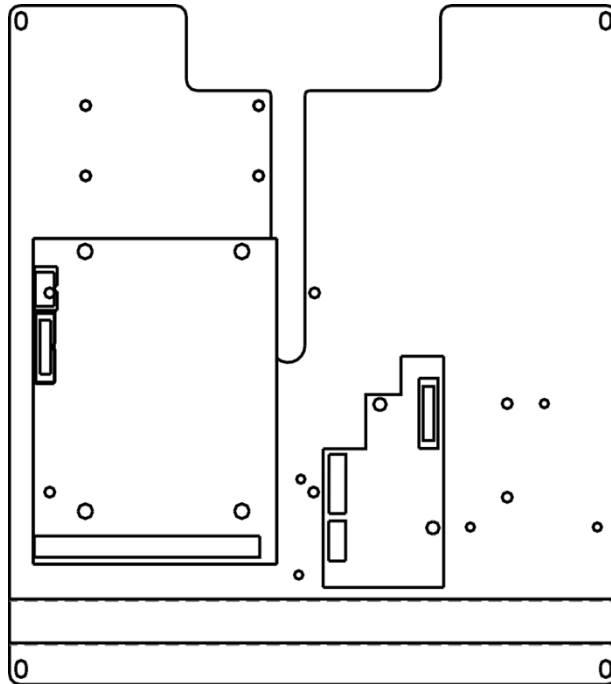
Dimension:



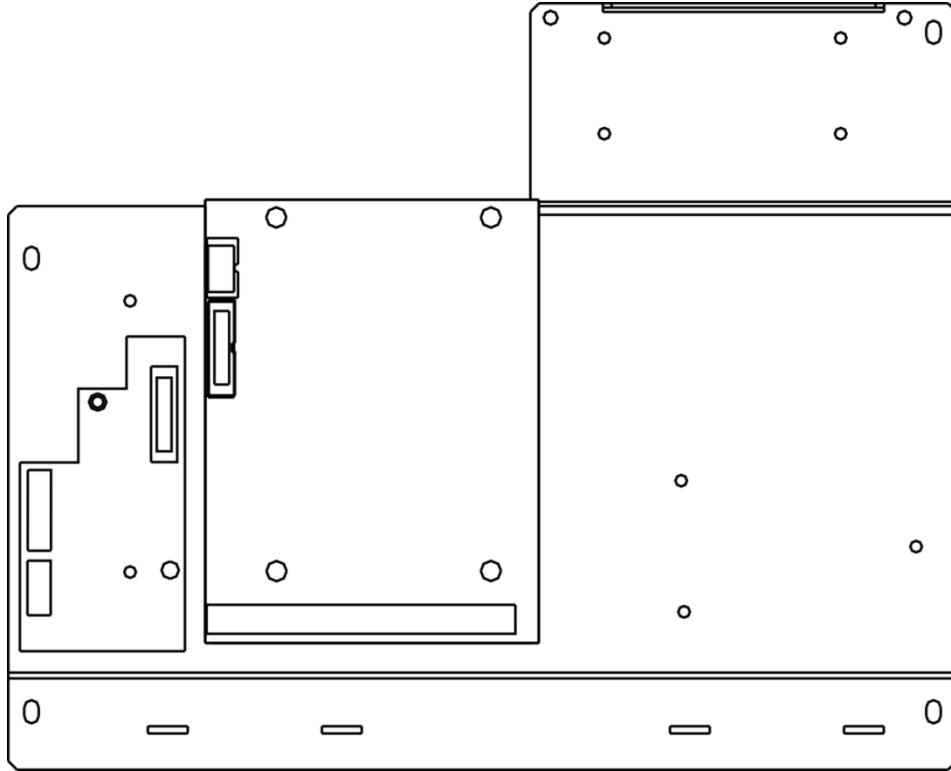
Internal Wiring diagram for frame size 3, 4, 5



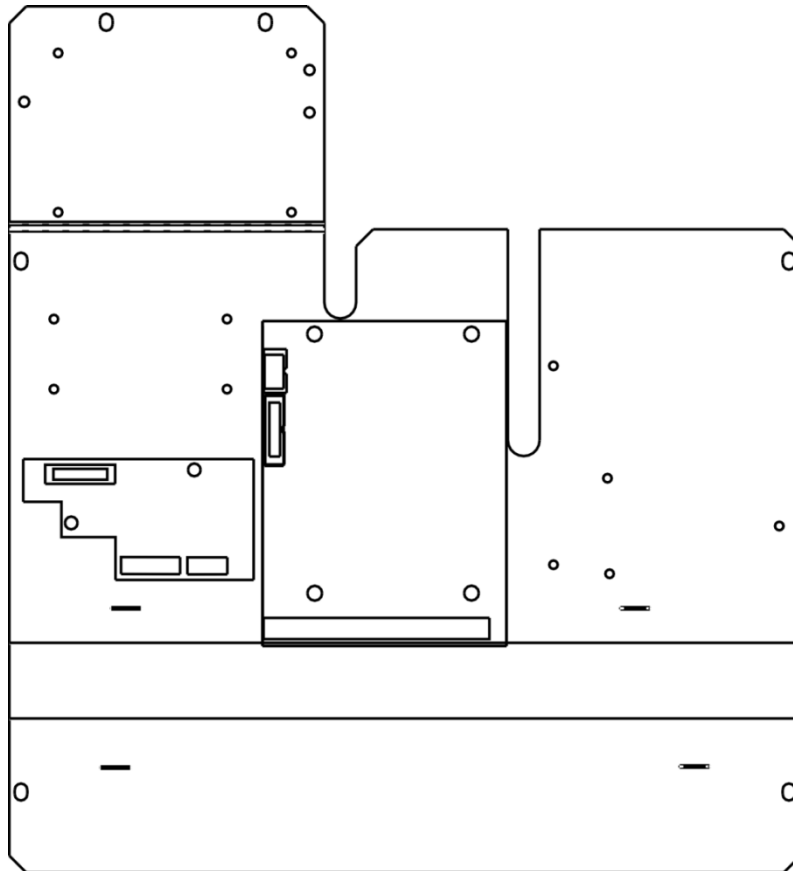
Installing diagram for size 6



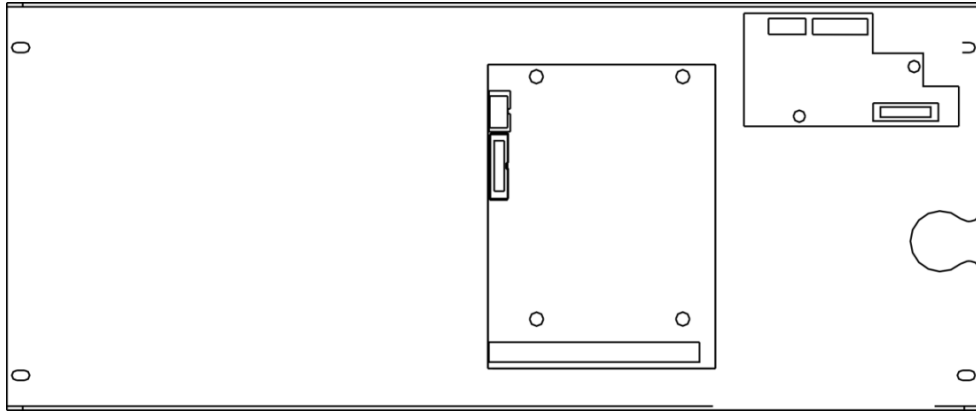
Installing diagram for size 7



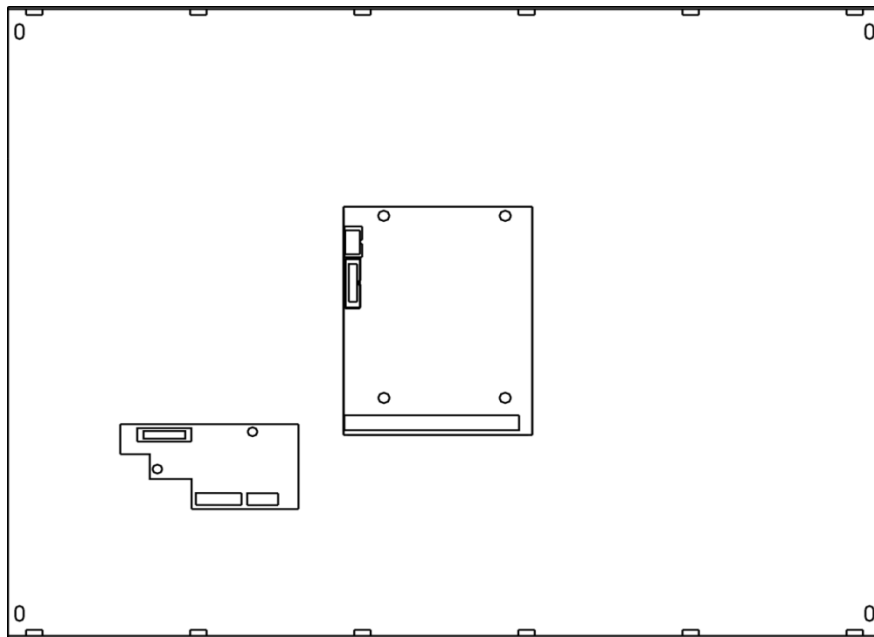
Installing diagram for size 8



Installing diagram for size 9



Installing diagram for size 10



Installing diagram for size 11

- For 4KW and above 4kW inverters, the expansion card is installed inside of inverter.
The card is installed nearby control board, which is fastened by 3*5 self-tapping screw. J1 connector is connected to J10 in the control board by 20-core flat cable.
- For below 4.0kW inverters, PG card is installed outside of inverter, the cable should be shorter than 30cm.

II. Instructions

2.1 Function

Please refer to instructions of FF section in the user manual of inverter for 4 terminals of DI input, 2 terminals of relay output.

2.2 Terminal and DIP

DIA	DIB	DIC	DID	+24V	CM	TA1	TC1	TA2	TC2
------------	------------	------------	------------	-------------	-----------	------------	------------	------------	------------

DIA~DID are DI input terminals, TA1/TC1, TA2/TC2 are relay normal-open contact terminals.