

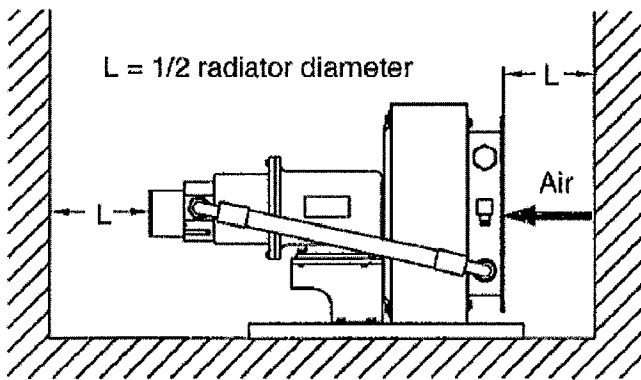


## Installation and Servicing Instructions: ULOC Air/Oil Cooler

These instructions should be observed prior to installation of the PARKER ULOC cooler.

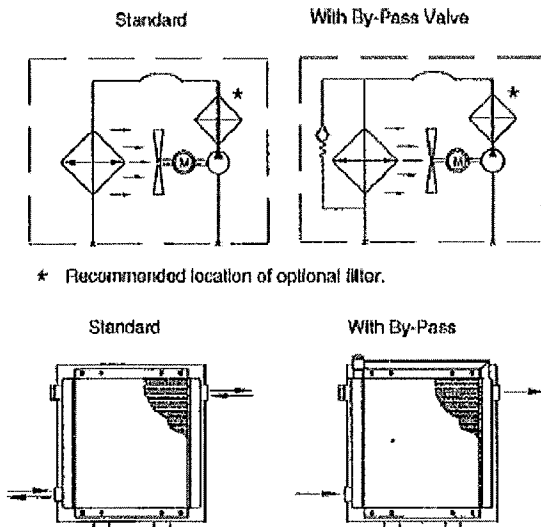
### Mounting

The ULOC cooling system permits both horizontal and vertical mounting. Consult PARKER for details. To prevent personal injury, always secure the cooler adequately. The distance from the nearest wall should not be less than half the height of the radiator.



### Hydraulic connection

Connect the cooler as illustrated below using hydraulic hoses both to and from the cooler. PARKER recommends mounting the cooler in a separate cooling circuit. PARKER shall not be liable for the results of any connection modification and/or variation.



### Pump Connection

Place the suction side of the circulation pump as close to the tank as possible. The suction line diameter should not be less than the size of the pump connection. Avoid flow rates in excess of 3ft/s in suction line. If possible, place pump below the fluid level of the tank. If this is not possible, limit the horizontal distance between the pump and tank to less than 3 feet.

*Caution: The pump should not be run in such a way that the output pressure exceeds 60psi.*

Excessive pressure buildup may occur in the system if pump outlet is blocked or severely throttled. This could damage the pump and cause personal injury.

Contaminated fluid reduces the service life of the pump. Use clean fluids as much as possible.

### Electrical Connection

*Caution: Standard motor uses a 230 / 460V electric source. Work should only be performed by a qualified electrician.*

### Prior to Start-Up

- Check the cooler radiator and fan guard for damage.
- Check that the cooler is connected according to the diagrams listed. PARKER shall not be liable for the consequences of any variation
- Make sure that all valves or similar components are operating.
- Manually run fan to make sure there is clearance between the fan blades and the fan shroud.
- If cooler is installed above the level of the fluid tank, protect the line by filling it with fluid.

*Caution: The pump has no built in relief valve.*

### At Start-up

Check that the fan is rotating in the correct direction.



## Cleaning the Pump

The pump is a sealed unit. PARKER shall not be liable for the consequences of disassembly. If the pump has been running with contaminated fluid, clean the pump by running it with clean fluid.

*Caution: When cleaning the exterior of the pump (e.g. washing) disconnect the electric motor from the power supply.*

## Miscellaneous

In the event of a breakdown, contact PARKER. PARKER shall not be liable for the consequences of any repair and or modifications made without prior consent. When handling the cooler (e.g. for cleaning) disconnect the power supply and remember that the cooler may be hot. The fan generates static electricity by air friction. Do not put sensitive equipment in the immediate vicinity of the cooler. Consult PARKER when using fluids that are different to normal hydraulic fluid (e.g. fluids with a high viscosity or in the case of cold starting).

## Noise Level

The noise level for the coolers range from 70 to 90 dB(A). Hearing protection may be required. Please consult PARKER if you feel the noise level is excessive for the application.

## Cleaning the Cooler Radiator

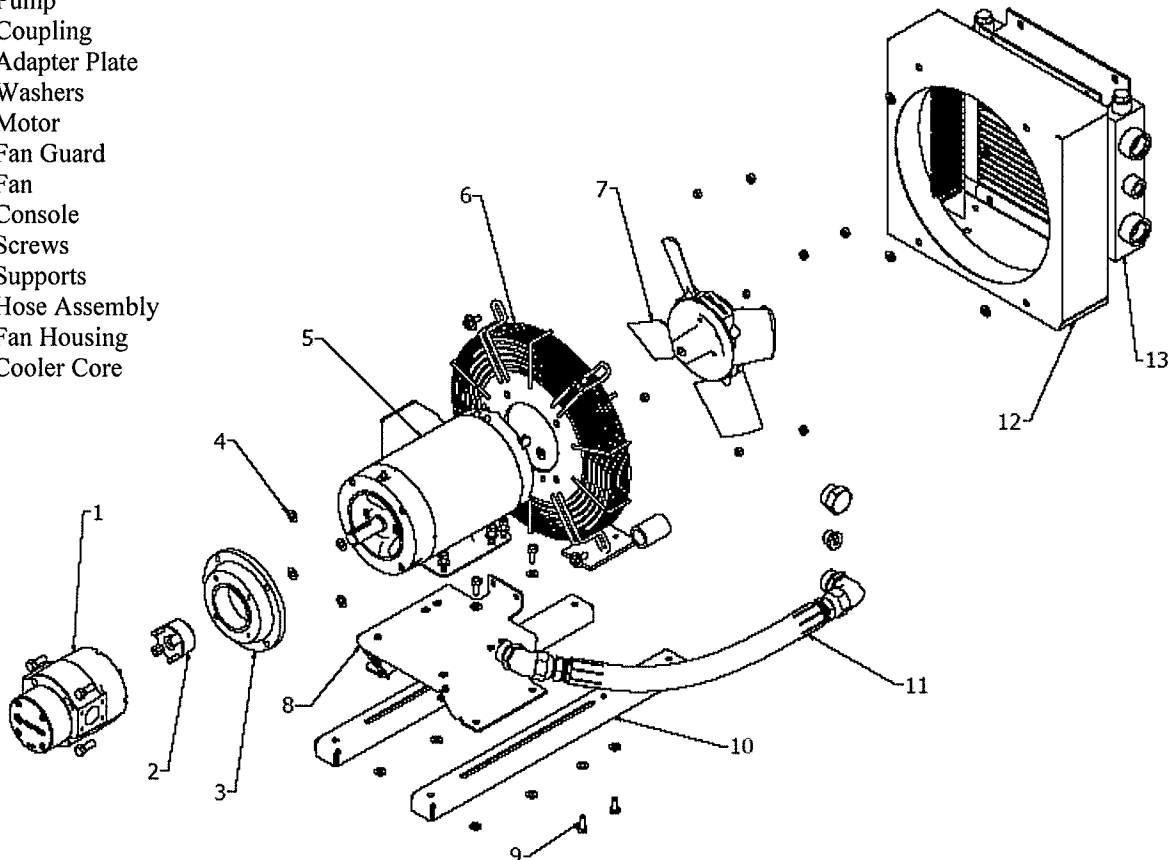
The easiest way to clean the air fins of the radiator is by using compressed air. Fouling can be dealt with by using a high pressure washing system and a degreasing agent.

*Caution: When using a high pressure washing system, point the jet parallel to the air fins. The cooler radiator should be cool before cleaning.*

To clean the inside of the radiator, connect the radiator to a closed circuit and flush the inside with a degreasing agent. After cleaning the radiator, it should be flushed with the same fluid as used in the system.

## Parts List:

1. Pump
2. Coupling
3. Adapter Plate
4. Washers
5. Motor
6. Fan Guard
7. Fan
8. Console
9. Screws
10. Supports
11. Hose Assembly
12. Fan Housing
13. Cooler Core





 **WARNING**

**FAILURE OR IMPROPER SELECTION OR IMPROPER USE OF THE PRODUCTS AND/OR SYSTEMS DESCRIBED HEREIN OR RELATED ITEMS CAN CAUSE DEATH, PERSONAL INJURY AND PROPERTY DAMAGE.**

This document and other information from Parker Hannifin, its subsidiaries and authorized distributors provide product and/or system options for further investigation by users having expertise. It is important that you analyze all aspects of your application, including consequences of any failure and review the information concerning the product or system in the current product catalog. Due to the variety of operating conditions and applications for these products or systems, the user, through its own analysis and testing, is solely responsible for making the final selection of the products and systems and assuring that all performance, safety and warning requirements of the application are met.

The products described herein, including without limitation, product features, specifications, designs, availability and pricing, are subject to change by Parker Hannifin and its related companies at any time without notice.