

**CHELSEA®**



## NEW AIR SHIFT SEALS

**PTO-TEC-86**

**TECHNICAL**

**DATE:** September 15, 1997

**TO:** All Chelsea® Power Take-Off Customers

To enhance the sealing of the piston and air shift cylinder in our air shift covers, a running change will be made to our 880 and 941 Series air shift assemblies starting September, 1997. This change affects the 329101X air shift cover used for the 880 and 941 Series which contain the floating piston, part number 66-P-21, and the block vee rings, part number 28-P-257. The existing piston 66-P-21 will be replaced by a new piston—part number 66-P-23. The old style block vee rings, 28-P-257, are being replaced by part number 28-P-61 which is an O-Ring design.

For service purposes on 880 or 941 Series that uses the old style piston use service kit 328356-60X—this kit will contain the new style O-Rings and piston. Do not use the Block Vee Rings (28-P-257) with the new piston (66-P-23) or the O-Rings (28-P-61) with the old style piston (66-P-21). While the outside diameter and width of the piston do not change, the depth of the groove for the seals do, so the seals are not interchangeable between the pistons. The existing air shift cover seal kit, 328356-54X, will be updated to contain the 28-P-61 O-Rings.

Shown on the reverse side of this bulletin are drawings of the old and new style assemblies for your reference.

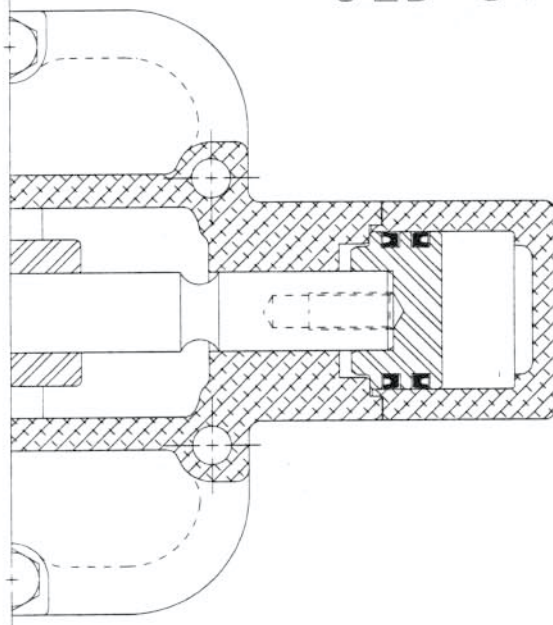
Jeff King  
Product Manger  
Chelsea Auxiliary Products

-Over-



**PTO INFO**

OLD STYLE



NEW STYLE

