

Touch screens operators

TS8000 series



Description

TS8000 is a high-performance Touch Screen operator panel with many built-in functions. This TS8000 offers most of the features typically available on PC-based SCADA systems.

TS8000 can communicate with different hardware through 10/100 Base-T Ethernet ports and high-speed RS232/485. In addition, the new operator panel features a USB port for fast downloading of configuration files and access to stored trending data.

TS8000 also includes the slot to accommodate a CompactFlash card, for storing process data and expanding memory available for configuration files.

Multilingual graphical interface

Pre-engineered projects

Built-in Web server

CompactFlash card slot

Integrated protocol conversion

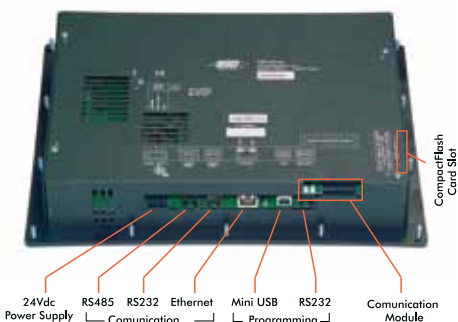
Software and programming cable included

Technical specifications

Power supply	24Vdc \pm 20%
Operating temperature	0-50°C
Maximum humidity	80% without condensation
Altitude	2000 m
Degree of protection	IP66 / Nema 4
Touchscreen	Resistive Analog TS8003 : . 8 programmable . 5 navigation . 12 numerical . 7 dedicated keys TS8006 : 5 keys for on-screen menu TS8008 : 7 keys for on-screen menu TS8010 : 8 keys for on-screen menu TS8015 : 10 keys for on-screen menu
Memory card	Slot suitable for CompactFlash Type I Type II cards (2 Gbytes maximum)
Communication ports	Programming USB 1.1 - Type B Connection Programming Serial RS232 - via RJ12 Communication Serial . RS232 - via RJ12 . RS485 - via RJ45 . Ethernet 10/100 Base T - RJ45 connector with wiring for PC network card

Monitor specifications

Type	Screen	Colors	Pixels
TS8003	32"/FSTN	2	128 x 64
TS8006	5.7"/STN	256 QVGA	320 x 240
TS8008	7.7"/DSTN	256 VGA	640 x 480
TS8010	10.4"/TFT		
TS8015	15"/TFT	32k XGA	1024 x 768

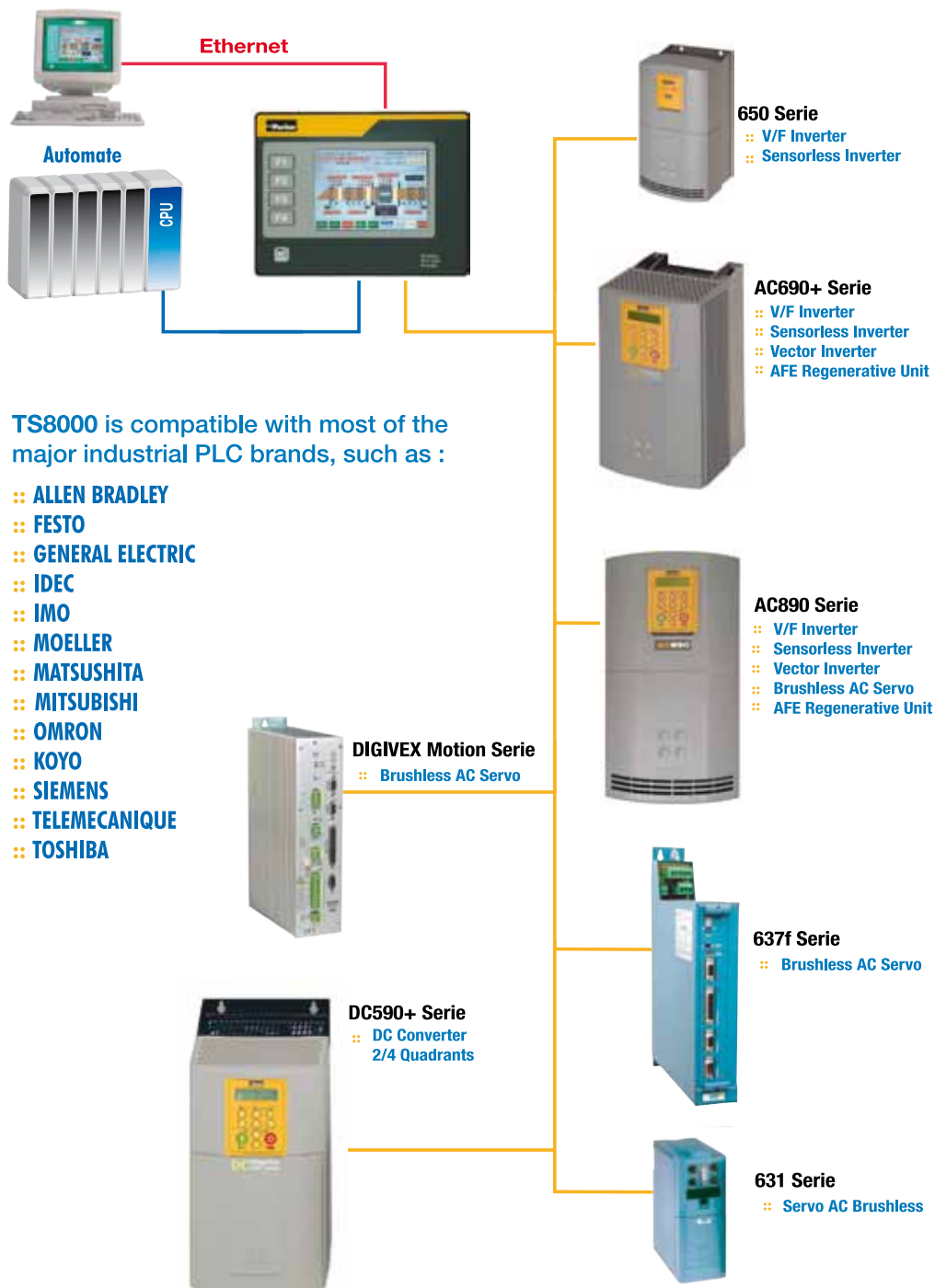


Touch screens operators

TS8000 series



Application diagram



Touch screens operators

TS8000 series



HMI features

Pre-engineered projects

- Library with over 4000 symbols
- Support for BMP, JPG, WMF graphics files
- Database
- Graphical trends
- Alarm logs
- Machine synoptics

Multilingual interface

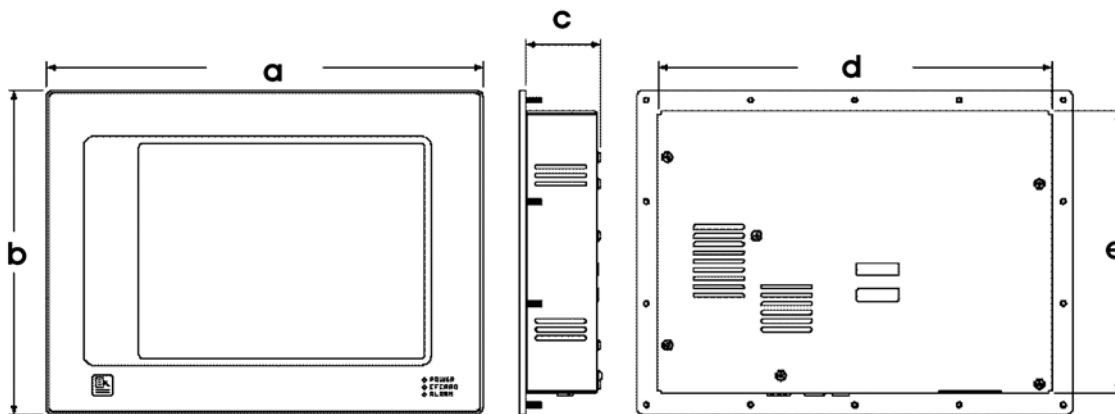
Programming and display in :	
Dutch	German
English	Italian
French	Spanish

Unicode* support for :	
Japanese	Chinese (Tradition.I)
Thai	Chinese (Simplified)
Korean	Others on request

* (Unicode support requires Windows language packs to be installed)

Dimensions and weights

Type	a (mm)	b (mm)	c (mm)	d (mm)	e (mm)	Weight (kg)
TS8003	189.2	148.6	52	153.4	112.8	0.89
TS8006	224.3	179.8	58.4	188.5	144	1.36
TS8008	262	207.8	56	226.3	172	1.74
TS8010	325.8	241.3	56	293.3	210.1	2.51
TS8015	406.4	330.2	71.5	370.6	294.4	5.17



International standards

Complies with standard :

- EN61010-1
- EN61326
- EN55011 classe A

CE marked

Communication cards

TS8000 series

Description

The TS8000 communication cards allow connection and integration of the TS800 into many popular fieldbus communication networks.

Features

Configuration	by means of DSI8000 configuration software
Power supply	Connection by pluggable 3-pin terminals
Operating Temperature	0 to 50°C
Storage Temperature	-20 to 80°C
Humidity	80% max. relative humidity (non-condensing) from 0 to 50°C
Altitude	2000 metres Max.

CANopen communications interface

Order code: 8000/CB/00

Supported protocols	<ul style="list-style-type: none">• CANopen SDO master
Communication speed	<ul style="list-style-type: none">• Selectable by software up to 1 Mbits/s
Communication	<ul style="list-style-type: none">• With Drive System Explorer software using RTNX protocol
Suitable for drives	<ul style="list-style-type: none">• AC890 version 3.2+

DeviceNet communications interface

Order code: 8000/DN/00

Supported protocols	<ul style="list-style-type: none">• DeviceNet – slave group 2 only
Communication speed	<ul style="list-style-type: none">• Selectable by software up to 500 kbits/s

Profibus interface 8000/PB/00

Order code: 8000/PB/00

Supported protocols	<ul style="list-style-type: none">• Profibus DP EN 50 170, I
Communication speed	<ul style="list-style-type: none">• up to 12 Mbits/s

Firewire communications interface

Order code: 8000/FA/00

This card allows data exchange between the TS8000 and an AC890 fitted with an 8903-FA-00 interface

Communication ports	Port A : IEEE 1394A Port B : IEEE 1394B
---------------------	--

Note : The TS8000 must use a Class 2 or SELV rated power supply

Link communications interface

Order code: 8000/LK/00

Supported protocols	LINK
Communication speed	2.7Mbits/s

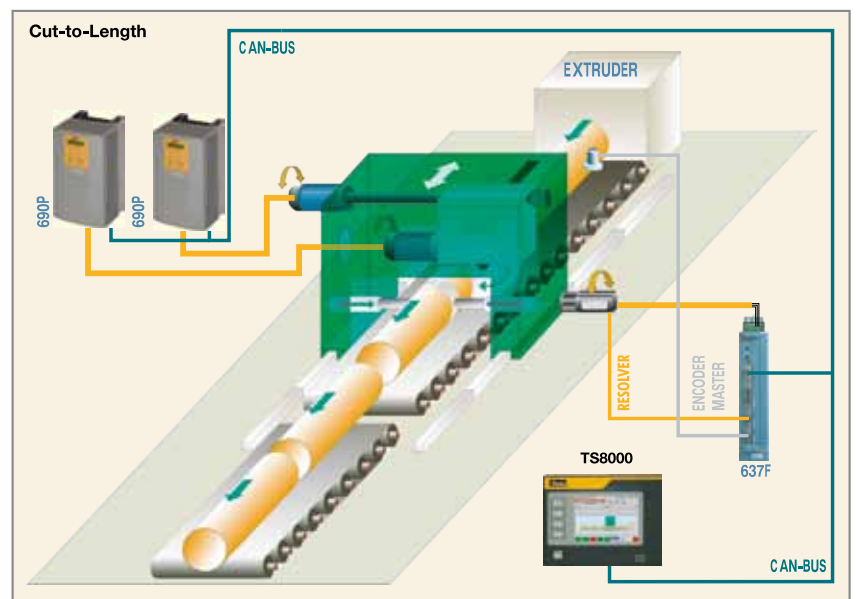
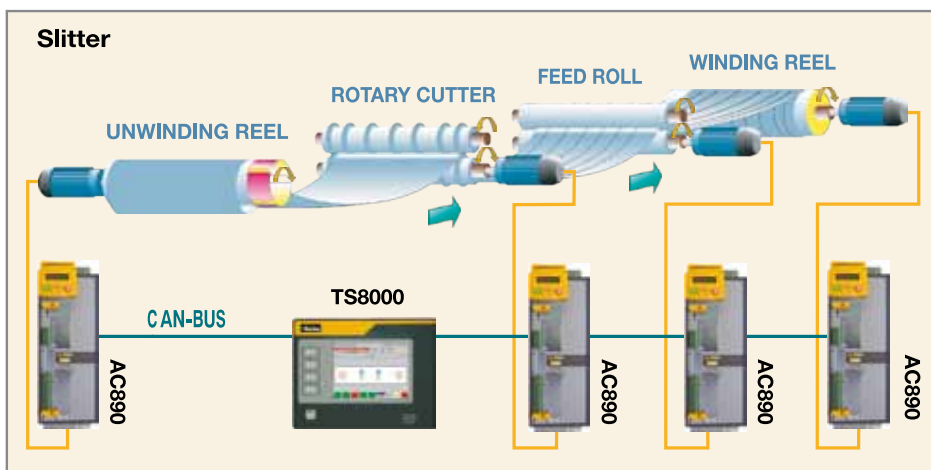
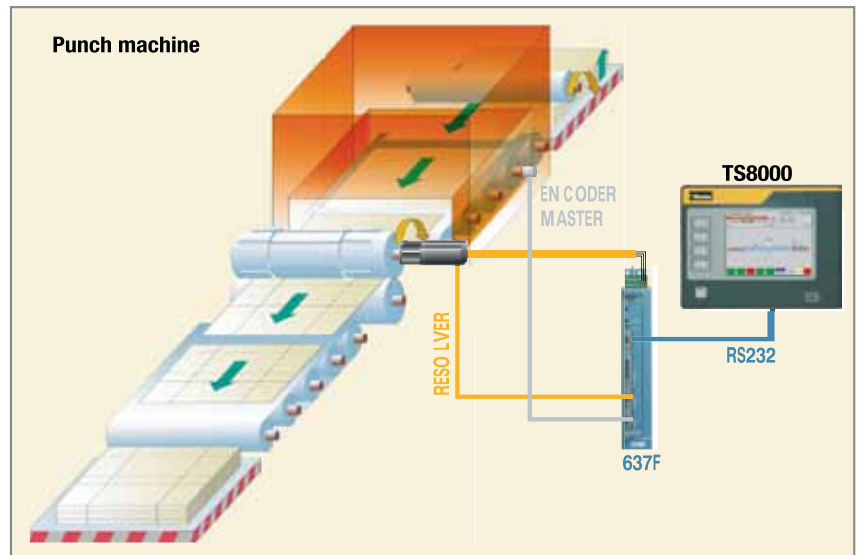
Allows data exchange between TS8000 and SSD LINK fibre optic network

Touch screens operators

TS8000 series



Applications



Accessories and options

DSI8000 series
programming software platform

Description

It is the icon-based programming software platform for all operator panels of the TS8000 Series.

DSI8000 includes all configuration, display, control and data logging tools. Applications can be set up using the step-by-step procedure to configure protocols, define data tags and create a graphical interface by means of the drag-and-drop icon structure and the pre-loaded symbol libraries.

DSI8000 also incorporates a tag database that allows users to organize and customize communications with converters and any other device connected to the system, and a Virtual Panel that enables real-time data display by using a standard browser.

Easy visual design

Recipes, trending, histograms and alarm logs

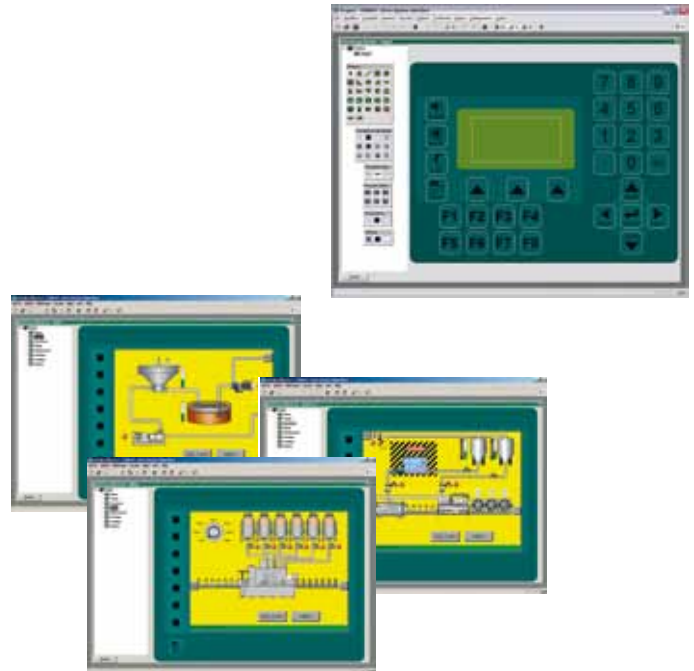
Built-in symbol library with over 4000 symbols

Web server

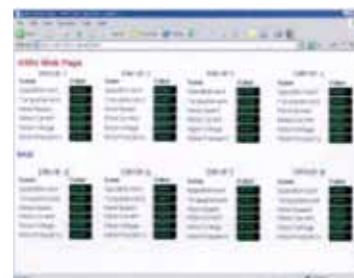
Built-in Data logger

Codification	
Type	Description
DSI8000	Programming software package including USB cable and using licence.

The software is included with every TS8000.



Built-in symbol library available for several machines



Web server



Built-in Data logger