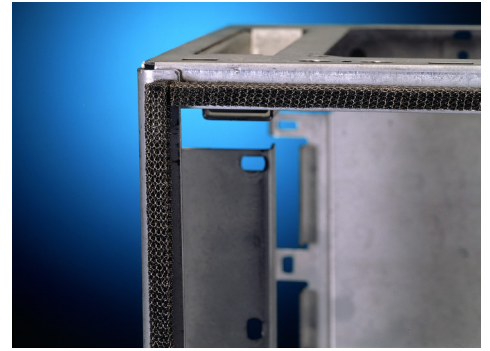


SOFT-SHIELD® 1000

Knitted Wire Over Foam Core EMI Shielding Gaskets

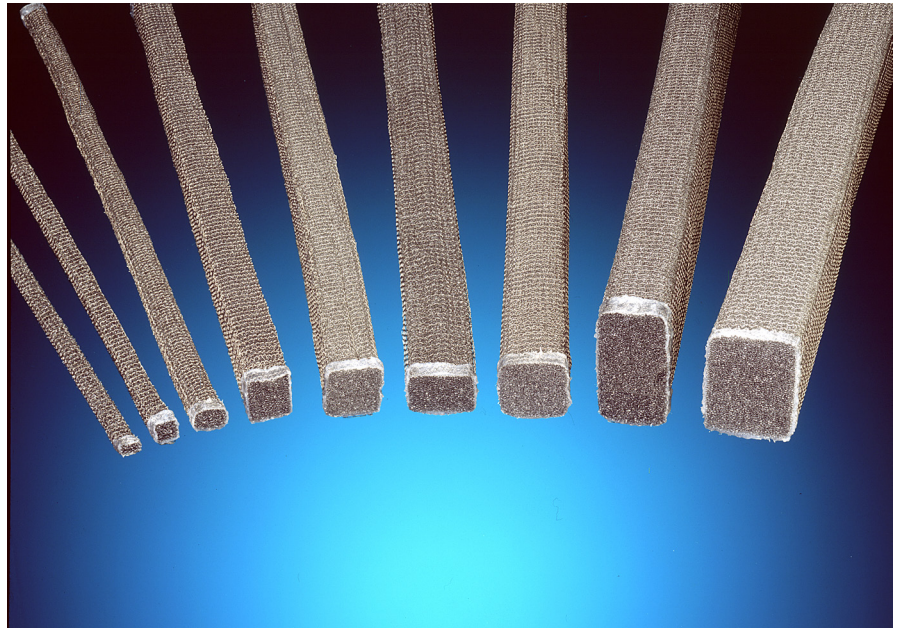


Customer Value Proposition:

High durability, exceptionally soft easy-to-install SOFT-SHIELD® 1000 gaskets are specially designed for EMI shielding commercial electronic enclosures with low closure force requirements, where weather sealing is not a requirement. They are constructed with a distinctive combination of fine knitted wire mesh over a soft urethane foam core. Standard wire types are Monel* or Ferrex**. Standard construction is 0.0035 inch (0.09 mm) diameter wire with a density of 10-15 knit courses per inch of length (CPI).

* Monel is a nickel-copper alloy per QQ-N-201.

** Ferrex® is Parker Chomerics tin-plated, copper-clad steel wire per ASTM B-520. ASTM (QQ-W-343) tin plate, 2-3% by weight; ASTM B-227 copper cladding, 30-40% by weight; SAE 1010 steel wire, balance by weight.



Contact Information:

Parker Hannifin Corporation
Chomerics Division
77 Dragon Court
Woburn, MA 01801

phone 781 935 4850
fax 781 933 4318
chomailbox@parker.com

www.parker.com/chomerics

Configurations:

SOFT-SHIELD 1000 gaskets are available in seven standard rectangular cross sections. Gaskets are supplied on spools, or cut to specified lengths, preventing fraying of the wire ends thereby eliminating FOD concerns.

For attachment to flanges or mounting surfaces, these gaskets are available with an acrylic pressure-sensitive adhesive (PSA) option for quick, efficient application. Gaskets can also be produced as 4-corner spliced picture frames.

Product Features:

- ~70 dB attenuation from 20 MHz to 10 GHz.
- ~ 0.35 lb/inch (0.062 N/mm) closure force
- 10-15% compression set at 25% deflection
- UL 94HF-1 flammability rated
- 2.5 - 4.5 lb/inch (0.44 - 0.79 N/mm) PSA peel strength
- Maintains performance after 10,000 compression cycles
- Only 0.93% moisture absorption
- Broad compression range of 35% ± 20%.
- Continuous lengths on reels or cut-to-length and terminated
- Operating temperature of -40° F to 158° F (-40° C to 70° C)

SOFT-SHIELD® 1000 - Available Profiles

Contact Parker Chomerics for any other special requirements and an updated profile list.

ORDERING INFORMATION

Use the following part numbers to order

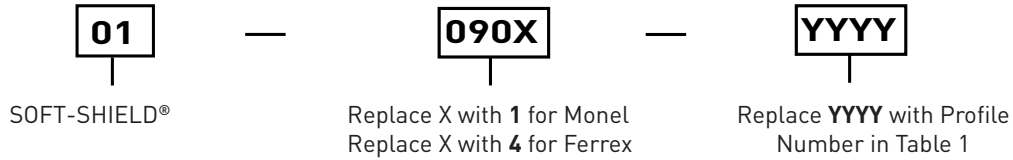


Table 1 - Profiles inches (mm)

Height	Width	Profile	Shape	PSA
0.125 (3.18)	0.187 (4.75)	6544	Rect.	No
		6601		Yes
0.125 (3.18)	0.250 (6.35)	6572	Rect.	No
		6602		Yes
0.250 (6.35)	0.250 (6.35)	6574	Square	No
		6603		Yes
0.375 (9.53)	0.375 (9.53)	6573	Square	No
		6604		Yes
0.375 (9.53)	0.500 (12.70)	6548	Rect.	No
		6605		Yes
0.250 (6.35)	0.375 (9.53)	6547	Rect.	No
		6606		Yes
0.500 (12.70)	0.500 (12.70)	6600	Square	No
		6607		Yes

Table 2 - Tolerances

Cross Section inches (mm)
Up to 1.000" ± 0.031 (25.40 ± 0.81)
Over 1.000" ± 0.062 (25.40 ± 1.52)
Cut-To-Length inches (mm)
Up to 25.000' ± 0.125 (635 ± 3.18)
Over 25.000' ± 0.5% (635 ± 12.7) of overall length

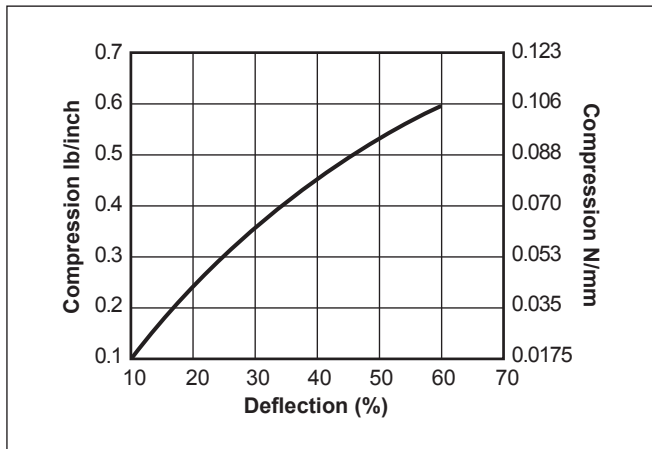


Figure 1 Typical Compression-Deflection

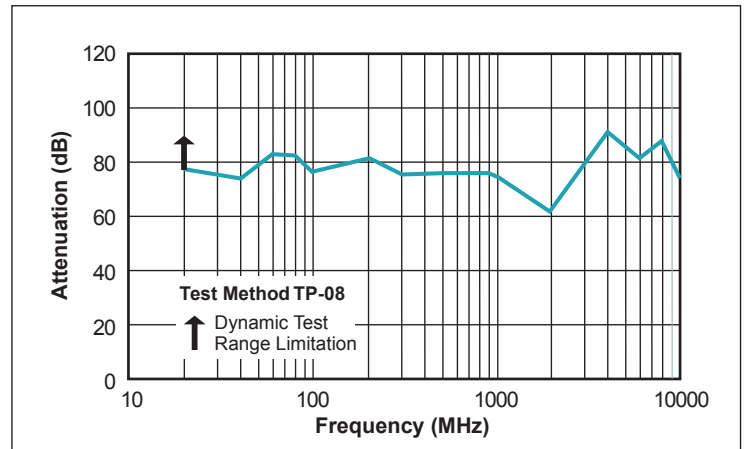


Figure 2 Typical Shielding Effectiveness

www.parker.com/chomerics

CHOMERICS and SOFT-SHIELD are registered trademarks of Parker Hannifin Corporation. © 2017

TB 1091