

# Mounting Flange EMI Gaskets

## MOUNTING FLANGE EMI GASKETS

Parker Chomerics die-cut CHO-SEAL gaskets provide EMI shielding and environmental sealing when inserted between a connector flange and a mounting bulkhead. The gaskets described in this section are designed for use with MIL-C-83723, MIL-C-5015, MIL-C-26482, MIL-C-38999 and MIL-C-81511 connectors. They are interchangeable with non-conductive gaskets.

In addition to standard sizes and configurations listed in Table 1, connector gaskets and ground planes can be custom designed.



## Contact Information:

Parker Hannifin Corporation  
**Chomerics Division**  
77 Dragon Court  
Woburn, MA 01801

phone 781 935 4850  
fax 781 933 4318  
chomailbox@parker.com

www.chomerics.com  
www.parker.com/chomerics

## ORDERING PROCEDURE

Standard Sizes: Using Table 1, construct the appropriate part number as illustrated below. For Custom Gaskets: Drawings must be supplied. Part numbers will be assigned by Parker Chomerics.

# Mounting Flange Gasket - Product Information

## ORDERING PROCEDURE

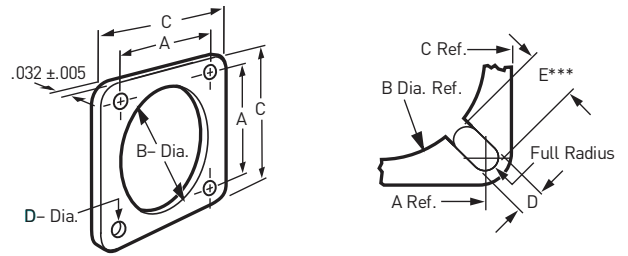
Standard Sizes: Using Table 1, construct the appropriate part number as illustrated below. For Custom Gaskets: Drawings must be supplied. Part numbers will be assigned by Parker Chomerics.

30 - 01 - ZZZZ - XXXXX

Configuration Drawing Number (from Table 1 below)

CHO-SEAL Material

MIL-C-38999 Series III and MIL-C-28840



Note: The radius of each corner is equal to  $\frac{C-A}{2}$

Table 1: Mounting Flange EMI Gaskets

| Shell Size | Letter | Configuration Drawing No. ZZZZ |    |     |    |                    |                    | Dimensions inches (mm)                  |                          |                      |               |               |               |              |
|------------|--------|--------------------------------|----|-----|----|--------------------|--------------------|-----------------------------------------|--------------------------|----------------------|---------------|---------------|---------------|--------------|
|            |        | MIL-C-38999 Series             |    |     |    | MIL-C-81511 Series | MIL-C-28840 Series | MIL-C-5015 C-83723 NAS-1599 MIL-C-26482 | MIL P/N: M83528/004X-[ ] | A                    | B             | C             | D             | E***         |
|            |        | I                              | II | III | IV |                    |                    |                                         | ±0.010 (0.25)            | +0.020 (0.51) -0.000 | ±0.015 (0.38) | ±0.010 (0.25) | ±0.010 (0.25) |              |
| 6          |        |                                |    |     |    |                    |                    | 1946*                                   | 001                      | 0.469 (11.91)        | 0.375 (9.53)  | 0.738 (18.75) | 0.141 (3.58)  |              |
| 8          |        | 1947                           | √  |     |    |                    |                    |                                         | 001                      | 0.594 (15.09)        | 0.630 (16.00) | 0.840 (21.34) | 0.135 (3.43)  |              |
|            |        |                                |    |     |    | 4690               |                    |                                         | 003                      | 0.594 (15.09)        | 0.568 (14.43) | 0.812 (20.62) | 0.125 (3.18)  |              |
| 9          |        | 1949                           | √  |     |    |                    |                    | 1948                                    | 004                      | 0.594 (15.09)        | 0.500 (12.70) | 0.875 (22.23) | 0.156 (3.96)  |              |
|            | A      | C646                           |    |     | √  |                    |                    |                                         | NA                       | 0.719 (18.26)        | 0.750 (19.05) | 0.965 (24.51) | 0.135 (3.43)  | 0.222 (5.64) |
| 10         |        | 1949                           | √  |     |    |                    |                    |                                         | 005                      | 0.719 (18.26)        | 0.750 (19.05) | 0.965 (24.51) | 0.135 (3.43)  |              |
|            |        |                                |    |     |    | 4691               |                    |                                         | 006                      | 0.719 (18.26)        | 0.680 (17.27) | 0.937 (23.80) | 0.125 (3.18)  |              |
|            | (S/SL) |                                |    |     |    |                    |                    | 1950                                    | 007                      | 0.719 (18.26)        | 0.625 (15.88) | 1.000 (25.40) | 0.156 (3.96)  |              |
| 11         |        | 6961                           | √  |     |    |                    |                    |                                         | 008                      | 0.812 (20.62)        | 0.875 (22.23) | 1.060 (26.92) | 0.141 (3.58)  |              |
|            | B      | C647                           |    |     | √  |                    |                    |                                         | NA                       | 0.812 (20.62)        | 0.875 (22.23) | 1.060 (26.92) | 0.141 (3.58)  | 0.206 (5.23) |
|            | A      |                                |    |     |    |                    | C637               |                                         | NA                       | 0.750 (19.05)        | 0.875 (22.23) | 1.046 (26.57) | 0.141 (3.58)  | 0.163 (4.14) |
| 12         |        | 6961                           | √  |     |    |                    |                    |                                         | 008                      | 0.812 (20.62)        | 0.875 (22.23) | 1.060 (26.92) | 0.141 (3.58)  |              |
|            | (S/SL) |                                |    |     |    |                    |                    | 1951                                    | 009                      | 0.813 (20.65)        | 0.750 (19.05) | 1.094 (27.79) | 0.156 (3.96)  |              |
| 13         |        | 1953                           | √  |     |    |                    |                    |                                         | 010                      | 0.906 (23.01)        | 1.005 (25.53) | 1.153 (29.29) | 0.135 (3.43)  |              |
|            | C      | C648                           |    |     | √  |                    |                    |                                         | NA                       | 0.906 (23.01)        | 1.000 (25.40) | 1.156 (29.36) | 0.141 (3.58)  | 0.206 (5.23) |
|            | B      |                                |    |     |    |                    | C638               |                                         | NA                       | 0.843 (21.41)        | 1.000 (25.40) | 1.156 (29.36) | 0.141 (3.58)  | 0.167 (4.24) |
| 14         |        | 1953                           | √  |     |    |                    |                    |                                         | 010                      | 0.906 (23.01)        | 1.005 (25.53) | 1.153 (29.29) | 0.135 (3.43)  |              |
|            |        |                                |    |     |    | 4692               |                    |                                         | 011                      | 0.906 (23.01)        | 0.938 (23.83) | 1.125 (28.58) | 0.125 (3.18)  |              |
|            | (S)    |                                |    |     |    |                    |                    | 1952                                    | 012                      | 0.906 (23.01)        | 0.875 (22.23) | 1.188 (30.18) | 0.156 (3.96)  |              |
| 15         |        | 1955                           | √  |     |    |                    |                    |                                         | 013                      | 0.969 (24.61)        | 1.135 (28.83) | 1.258 (31.95) | 0.156 (3.96)  |              |
|            | D      | C649                           |    |     | √  |                    |                    |                                         | NA                       | 0.969 (24.61)        | 1.135 (28.83) | 1.258 (31.95) | 0.156 (3.96)  | 0.206 (5.23) |
|            | C      |                                |    |     |    |                    | C639               |                                         | NA                       | 0.968 (24.59)        | 1.187 (30.15) | 1.281 (32.54) | 0.141 (3.58)  | 0.161 (4.09) |

√ Available in series designated.

\* Shell size 6 not specified in MIL-C-5015

\*\* Shell size 28-48 specified in MIL-C-5015.

\*\*\* For dimension E, hole is slotted through to B diameter.

\*\*X\*\* should be replaced by applicable MIL-DTL-83528 material type (e.g. A, B, C, etc.).

MIL-DTL-83528 dash number should be inserted (without parentheses) at end of MIL P/N.

Note: Refer to Chomerics Conductive Elastomer EMI Gaskets Molded and Extruded Materials Selector Guide for details.

# Mounting Flange Gasket - Product Information

## ORDERING PROCEDURE

Standard Sizes: Using Table 1, construct the appropriate part number as illustrated below. For Custom Gaskets: Drawings must be supplied. Part numbers will be assigned by Parker Chomerics.

30 - 01 - ZZZZ - XXXXX  
 Configuration Drawing Number Material  
 (from Table 1 below)

MIL-C-38999 Series III and MIL-C-28840

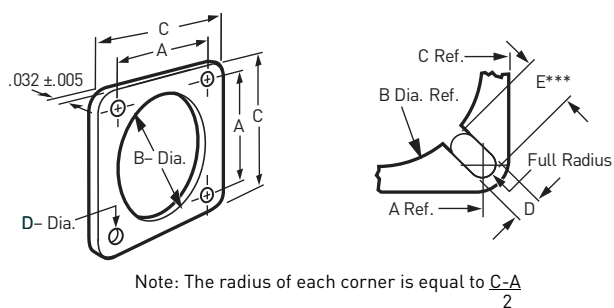


Table 1: Mounting Flange EMI Gaskets *continued*

| Shell Size | Configuration Drawing No. ZZZZ |                    |    |     |    |                    |                    |                                         | Dimensions inches (mm)    |                      |               |               |               |
|------------|--------------------------------|--------------------|----|-----|----|--------------------|--------------------|-----------------------------------------|---------------------------|----------------------|---------------|---------------|---------------|
|            | Letter                         | MIL-C-38999 Series |    |     |    | MIL-C-81511 Series | MIL-C-28840 Series | MIL-C-5015 C-83723 NAS-1599 MIL-C-26482 | MIL P/N: M83528/004X'-( ) | A                    | B             | C             | D             |
|            |                                | I                  | II | III | IV |                    |                    |                                         | ±0.010 (0.25)             | +0.020 (0.51) -0.000 | ±0.015 (0.38) | ±0.010 (0.25) | ±0.010 (0.25) |
| 16         |                                | 1955               |    | √   |    |                    |                    | 013                                     | 0.969 (24.61)             | 1.135 (28.83)        | 1.258 (31.95) | 0.156 (3.96)  |               |
|            |                                |                    |    |     |    | 4693               |                    | 014                                     | 0.969 (24.61)             | 1.063 (27.00)        | 1.250 (31.75) | 0.125 (3.18)  |               |
|            | (S)                            |                    |    |     |    |                    | 1954               | 015                                     | 0.969 (24.61)             | 1.000 (25.40)        | 1.281 (32.54) | 0.156 (3.96)  |               |
| 17         |                                | 1957               | √  |     |    |                    |                    | 016                                     | 1.062 (26.97)             | 1.260 (32.00)        | 1.351 (34.32) | 0.156 (3.96)  |               |
|            | E                              | C650               |    |     | √  |                    |                    | NA                                      | 1.062 (26.97)             | 1.260 (32.00)        | 1.351 (34.32) | 0.156 (3.96)  | 0.222 (5.64)  |
|            | D                              |                    |    |     |    |                    | C640               | NA                                      | 1.015 (25.78)             | 1.250 (31.75)        | 1.406 (35.71) | 0.141 (3.58)  | 0.163 (4.14)  |
| 18         | (S)                            | 1957               |    | √   |    |                    |                    | 016                                     | 1.062 (26.97)             | 1.260 (32.00)        | 1.351 (34.32) | 0.156 (3.96)  |               |
|            |                                |                    |    |     |    | 4694               |                    | 017                                     | 1.062 (26.97)             | 1.189 (30.20)        | 1.343 (34.11) | 0.125 (3.18)  |               |
|            |                                |                    |    |     |    |                    | 1956               | 018                                     | 1.062 (26.97)             | 1.135 (28.83)        | 1.375 (34.93) | 0.156 (3.96)  |               |
| 19         |                                | 6962               | √  |     |    |                    |                    | 019                                     | 1.156 (29.36)             | 1.375 (34.93)        | 1.500 (38.10) | 0.141 (3.58)  |               |
|            | F                              | C651               |    |     | √  |                    |                    | NA                                      | 1.156 (29.36)             | 1.375 (34.93)        | 1.500 (38.10) | 0.141 (3.58)  | 0.206 (5.23)  |
|            | E                              |                    |    |     |    |                    | C641               | NA                                      | 1.140 (28.96)             | 1.437 (36.50)        | 1.531 (38.89) | 0.141 (3.58)  | 0.158 (4.01)  |
| 20         |                                | 6962               |    |     |    |                    |                    | 019                                     | 1.156 (29.36)             | 1.375 (34.93)        | 1.500 (38.10) | 0.141 (3.58)  |               |
|            |                                |                    |    | √   |    | 4695               |                    | 020                                     | 1.156 (29.36)             | 1.312 (33.32)        | 1.467 (37.26) | 0.125 (3.18)  |               |
|            |                                |                    |    |     |    |                    | 1958               | 021                                     | 1.156 (29.36)             | 1.250 (31.75)        | 1.500 (38.10) | 0.172 (4.37)  |               |
| 21         |                                | 6963               | √  |     |    |                    |                    | 022                                     | 1.250 (31.75)             | 1.500 (38.10)        | 1.625 (41.28) | 0.141 (3.58)  |               |
|            | G                              | C652               |    |     | √  |                    |                    | NA                                      | 1.250 (31.75)             | 1.500 (38.10)        | 1.625 (41.28) | 0.141 (3.58)  | 0.206 (5.23)  |
| 22         |                                | 6963               |    | √   |    |                    |                    | 022                                     | 1.250 (31.75)             | 1.500 (38.10)        | 1.625 (41.28) | 0.141 (3.58)  |               |
|            |                                |                    |    |     |    | 4969               |                    | 023                                     | 1.250 (31.75)             | 1.437 (36.50)        | 1.562 (39.67) | 0.125 (3.18)  |               |
|            |                                |                    |    |     |    |                    | 1959               | 024                                     | 1.250 (31.75)             | 1.375 (34.93)        | 1.625 (41.28) | 0.172 (4.37)  |               |
| 23         |                                | 6964               | √  |     |    |                    |                    | 025                                     | 1.375 (34.93)             | 1.625 (41.28)        | 1.750 (44.45) | 0.172 (4.37)  |               |
|            | H                              | C653               |    |     | √  |                    |                    | NA                                      | 1.375 (34.93)             | 1.625 (41.28)        | 1.750 (44.45) | 0.172 (4.37)  | 0.259 (6.58)  |
|            | F                              |                    |    |     |    |                    | C642               | NA                                      | 1.281 (32.54)             | 1.625 (41.28)        | 1.750 (44.45) | 0.141 (3.58)  | 0.164 (4.17)  |

√ Available in series designated.

\* Shell size 6 not specified in MIL-C-5015

\*\* Shell size 28-48 specified in MIL-C-5015.

\*\*\* For dimension E, hole is slotted through to B diameter.

\*"X" should be replaced by applicable MIL-DTL-83528 material type (e.g. A, B, C, etc.).

MIL-DTL-83528 dash number should be inserted (without parentheses) at end of MIL P/N.

Note: Refer to Chomerics Conductive Elastomer EMI Gaskets Molded and Extruded Materials Selector Guide for details.

# Mounting Flange Gasket - Product Information

## ORDERING PROCEDURE

Standard Sizes: Using Table 1, construct the appropriate part number as illustrated below. For Custom Gaskets: Drawings must be supplied. Part numbers will be assigned by Parker Chomerics.

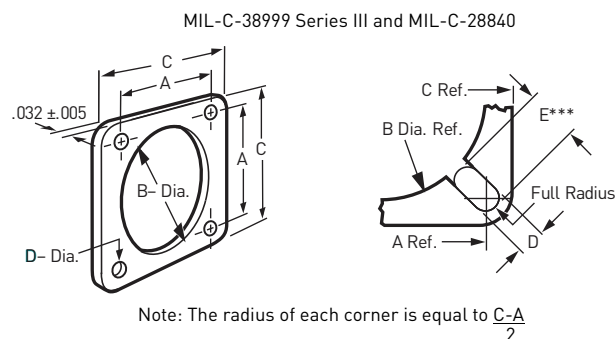
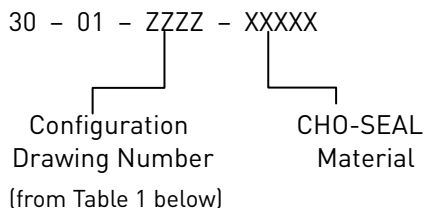


Table 1: Mounting Flange EMI Gaskets *continued*

| Shell Size |        | Configuration Drawing No. ZZZZ |    |     |    |                    |                    |                                         | Dimensions inches (mm)                |                |                      |               |               |               |
|------------|--------|--------------------------------|----|-----|----|--------------------|--------------------|-----------------------------------------|---------------------------------------|----------------|----------------------|---------------|---------------|---------------|
| No         | Letter | MIL-C-38999 Series             |    |     |    | MIL-C-81511 Series | MIL-C-28840 Series | MIL-C-5015 C-83723 NAS-1599 MIL-C-26482 | MIL P/N: M83528/004X <sup>†</sup> (-) | A              | B                    | C             | D             | E***          |
|            |        | I                              | II | III | IV |                    |                    |                                         |                                       | ±0.010 [0.25]  | +0.020 [0.51] -0.000 | ±0.015 [0.38] | ±0.010 [0.25] | ±0.010 [0.25] |
| 24         |        | 6964                           |    | √   |    |                    |                    | 025                                     | 1.375 (34.93)                         | 1.625 (41.28)  | 1.750 (44.45)        | 0.172 (4.37)  |               |               |
|            |        |                                |    |     |    | 4697               |                    | 026                                     | 1.375 (34.93)                         | 1.563 (39.710) | 1.703 (43.26)        | 0.152 (3.86)  |               |               |
|            |        |                                |    |     |    |                    | 1960               | 027                                     | 1.375 (34.93)                         | 1.500 (38.10)  | 1.750 (44.45)        | 0.203 (5.16)  |               |               |
| 25         |        | 6965                           | √  |     |    |                    |                    | 028                                     | 1.500 (38.10)                         | 1.750 (44.45)  | 1.875 (47.63)        | 0.172 (4.37)  |               |               |
|            | J      | C654                           |    |     | √  |                    |                    | NA                                      | 1.500 (38.10)                         | 1.750 (44.45)  | 1.875 (47.63)        | 0.172 (4.37)  | 0.259 (6.58)  |               |
|            | G      |                                |    |     |    |                    | C643               | NA                                      | 1.392 (35.36)                         | 1.750 (44.45)  | 1.843 (46.81)        | 0.172 (4.37)  | 0.195 (4.95)  |               |
|            |        |                                |    |     |    |                    | 1961               | 029                                     | 1.562 (39.67)                         | 1.750 (44.45)  | 2.000 (50.80)        | 0.203 (5.16)  |               |               |
| 29         | H      |                                |    |     |    |                    | C644               | NA                                      | 1.568 (39.83)                         | 2.000 (50.80)  | 2.171 (55.14)        | 0.172 (4.37)  | 0.195 (4.95)  |               |
| 32**       |        |                                |    |     |    |                    |                    | 1962                                    | 030                                   | 1.750 (44.45)  | 2.000 (50.80)        | 2.250 (57.15) | 0.219 (5.56)  |               |
| 33         | J      |                                |    |     |    |                    | C645               | NA                                      | 1.734 (44.04)                         | 2.187 (55.55)  | 2.356 (59.84)        | 0.203 (5.16)  | 0.234 (5.94)  |               |
| 36**       |        |                                |    |     |    |                    |                    | 1963                                    | 031                                   | 1.938 (49.23)  | 2.250 (57.15)        | 2.500 (63.50) | 0.219 (5.56)  |               |
| 40**       |        |                                |    |     |    |                    |                    | 1964                                    | 032                                   | 2.188 (55.58)  | 2.500 (63.50)        | 2.750 (69.85) | 0.219 (5.56)  |               |
| 44**       |        |                                |    |     |    |                    |                    | 1965                                    | 033                                   | 2.375 (60.33)  | 2.781 (70.64)        | 3.000 (76.20) | 0.219 (5.56)  |               |
| 48**       |        |                                |    |     |    |                    |                    | 1966                                    | 034                                   | 2.625 (66.68)  | 3.031 (76.99)        | 3.250 (82.55) | 0.219 (5.56)  |               |

√ Available in series designated.

\* Shell size 6 not specified in MIL-C-5015

\*\* Shell size 28-48 specified in MIL-C-5015.

\*\*\* For dimension E, hole is slotted through to B diameter.

<sup>†</sup>"X" should be replaced by applicable MIL-DTL-83528 material type (e.g. A, B, C, etc.).

MIL-DTL-83528 dash number should be inserted (without parentheses) at end of MIL P/N.

Note: Refer to Chomerics Conductive Elastomer EMI Gaskets Molded and Extruded Materials Selector Guide for details.

[www.chomerics.com](http://www.chomerics.com)  
[www.parker.com/chomerics](http://www.parker.com/chomerics)

CHOMERICS is a registered trademark of Parker Hannifin Corporation. © 2010

TB 1071 EN April 2012



ENGINEERING YOUR SUCCESS.